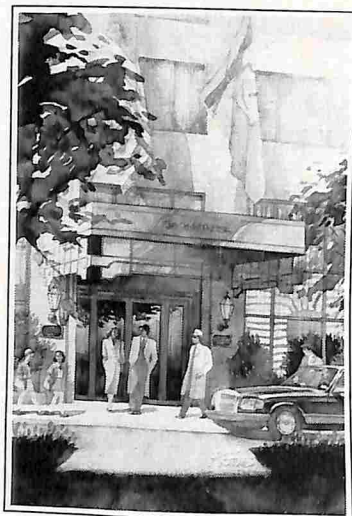


AS PREFERRED
AS PARK AVENUE



Located in one of the world's most exclusive neighborhoods, it promises an enclave of quiet elegance. Here are superb accommodations, a restaurant, lounge, fitness center and select meeting facilities...and, of course, uncompromising service.

THE REGENCY HOTEL



540 Park Avenue, New York, New York
(212) 759-4100 FAX (212) 826-5674/Telex 147180
For reservations call your travel expert
or (800) 233-2356.
Loews Hotels. Your Place In The World.



THE NEW YORKER

TABLE OF CONTENTS MAY 4, 1992

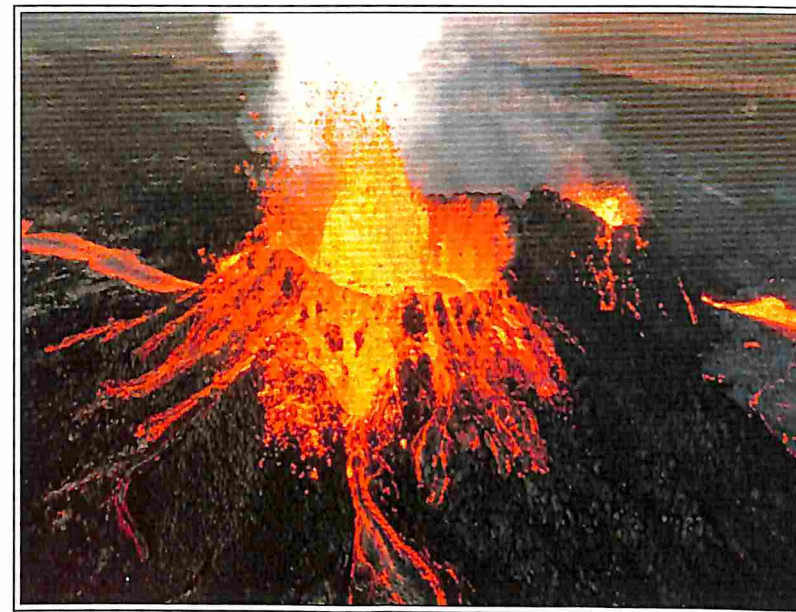
| | |
|---|----|
| GOINGS ON ABOUT TOWN | 4 |
| THE TALK OF THE TOWN | 27 |
| "NAKED LADIES" | 32 |
| "LINES FOR THE WINTER RECESS" (POEM) | 34 |
| PROFILES (GIORGIO STREHLER) | 40 |
| "LABRADOR" (POEM) | 42 |
| "REQUIESCAT: WESTERN UNION" (POEM) | 60 |
| THE THEATRE | 68 |
| MUSICAL EVENTS | 70 |
| THE CURRENT CINEMA | 74 |
| LETTER FROM LONDON | 78 |
| BOOKS | 93 |
| COVER: <i>Ann McCarthy</i> | |
| DRAWINGS: <i>Dana Fradon, Robert Weber, Bernard Schoenbaum, J.B. Handelsman, Jack Ziegler, Michael Maslin, Dean Vietor, Victoria Roberts, Robert Mankoff, Irena Roman, Ronald Searle, Edward Koren, Richard Cline, George Booth, Charles Barsotti, William Hamilton, Warren Miller, Gahan Wilson, Stephanie Skalsky, Mike Twohy</i> | |

THE NEW YORKER
20 WEST 43RD STREET, NEW YORK, N.Y. 10036
(212) 840-3800

SUBSCRIPTION SERVICE

To inquire about a subscription or to change an address, please write to The New Yorker, Box 56447, Boulder, Colorado 80322, or telephone 1-800 825-2510 (in Colorado 303 447-9330). For a change of address, subscribers should give four weeks' notice. If possible, please send the address label from a recent issue.

THE NEW YORKER (ISSN 0028-792X), published weekly by The New Yorker Magazine, Inc., 20 W. 43rd St., N.Y., N.Y. 10036; Steven T. Florio, president and chief executive officer; Lynn Guthrie Heiler, vice-president and publisher; Ruth A. Diem, vice-president and human resources director; Matthew D. Roberts, vice-president and marketing director; Pamela H. Older, vice-president and director of manufacturing; Martha Kaplan, vice-president. Branch advertising offices: 111 East Wacker Drive, Chicago, Ill. 60601; 41 Osgood Place, San Francisco, Calif. 94133; Suite 1460, 5900 Wilshire Blvd., Los Angeles, Calif. 90036; 1-11 Hay Hill, London W1X7LF, England; Penn Brown & Associates, Inc., 175 Derby St., No. 36, Hingham, Mass. 02043; Metropolitan Publishers Representatives: 3017 Fla. 33629; 3 Church St., Suite 503, Toronto, Canada M5E 1M2; Carol Orr & Co., 3500 Maple Ave., Suite 1060, Dallas, Tx. 75219; Catherine Billups & Co., Via Pinamonte Da Vimerate, No. 6, 20121 Milan, Italy. Vol. LXVIII, No. 11, class mail by the Post Office Department, Ottawa, Canada, and for payment of postage in cash. Canadian goods and services tax registration number R123242885. © 1992 by The New Yorker Magazine, Inc. All rights reserved. No part of this periodical may be reproduced without the consent of The New Yorker. THE MAGAZINE'S NAME AND LOGO, WHICH PUBLISHES THEM THROUGH ITS DIVISION THE NEW YORKER MAGAZINE, INC. Printed in U.S.A. Subscription rates: In U.S. and possessions, one year, \$32.00; two years, \$52.00. In Canada, one year, \$65.27 (includes G.S.T.). Other foreign, one year, \$66.00, payable in advance.
POSTMASTER: Send address changes to The New Yorker, Box 56447, Boulder, Colorado 80322.



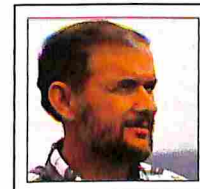
Eruption of Kilauea volcano on Hawaii

**"When you're working
on a volcano, your equipment
and wits can't fail you."**

—Dr. Michael Garcia

Earthquakes rock the black, rippled terrain. Fire fountains explode from the mountain's side. Iridescent orange lava, as hot as 2100° F, sweeps down the volcano's flanks in thin sheets and swift rivers. The air is filled with the roar of molten rock slamming against a crater wall. It rains pumice.

This is Kilauea, which ascends majestically from the floor of the Pacific and disgorges a continuous stream of lava that can fill a large stadium in less than a day.

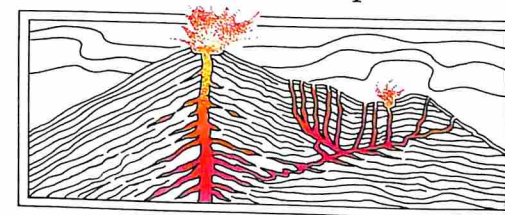


Dr. Michael Garcia

Professor Michael Garcia has devoted his career to exploring the mysteries of volcanoes, particularly Kilauea,

one of the most active in the world. "It's the premier place to study how volcanoes work," he said.

Dr. Garcia has been gathering data on Kilauea since 1978. When he is not in the lab conducting chemical analyses of lava, Garcia is in the field, measuring intervals between fire-fountain pulses and plucking samples from lava rivers. He believes that a keener understanding of the volcano and its internal structure can help scientists

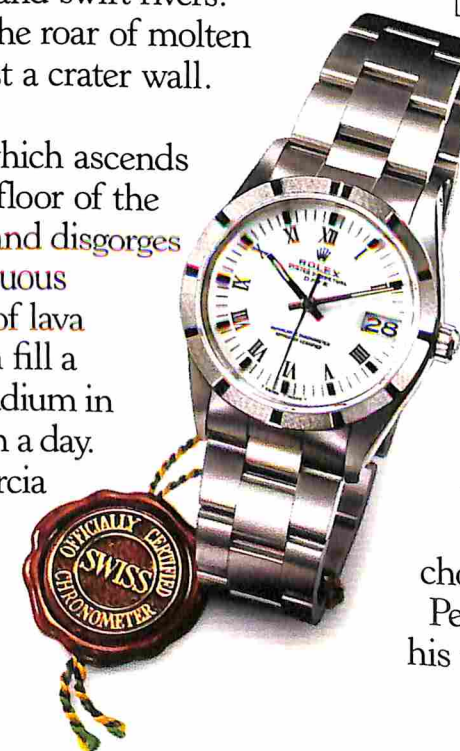


Magma conduits inside Kilauea

better anticipate eruptions.

Working in such a hostile environment, Garcia must rely on his experience, instinct and equipment. "You have to respect Kilauea's might—especially when you feel it rumbling beneath your feet," he said. Demanding the highest standards from his instruments, Dr. Garcia insists that they be rugged and reliable. It's little wonder that he has

chosen a Rolex Oyster Perpetual as his timepiece.



Oyster Perpetual Date in stainless steel with matching Oyster bracelet.

Write for brochure. Rolex Watch U.S.A., Inc., Dept. 648, Rolex Building, 665 Fifth Avenue, New York, New York 10022-5383.
© 1990 Rolex Watch U.S.A., Inc.

Rolex, Oyster Perpetual, and Oyster are trademarks.

May 4, 1992

THE

Price \$1.75

NEW YORKER



MereMart.com®

Vintage Magazines for Special People

A. McEnty