

NEWS & NOTES

W/O/Narrow Escapes Madonna, Kim Basinger, and *Boxing Helena*...Rourke's jab...HOT SHEET...KGB agents with agents...Musical authors...Waiting for the *End*...FLASHES...and more.

FEATURES

22/COVER The Big Bang Theory

The inside scoop on the summer's explosive movie sequels, off-beat comedies, and other thrillers and horrors of the season. **PLUS:** A double shot of Dana Delany; making *Honey*; *Cool World* creator Ralph Bakshi; and secrets of the sequelizers.

24/Irish Risky BY MELINA GEROSA

With its romantic 19th-century setting, *Far and Away* is a Gaelic gamble for newlyweds Tom Cruise and Nicole Kidman.

REVIEWS

50/MOVIES OWEN GLEIBERMAN on *Lethal Weapon 3*, *Far and Away*, and *The Waterdance*. **PLUS:** Comparing *Weapons*.

58/TELEVISION KEN TUCKER on *The Real World*; also *Code 3*, *Jack's Place*, and *Forever Knight*. **PLUS:** TV dolls tell all.

64/BOOKS TIM APPELO on Joseph McBride's *Frank Capra: The Catastrophe of Success*; also Ruth Rendell's *Kissing the Gunner's Daughter*, Barbara Vine's *King Solomon's Carpet*, and *Loose Canons*. **PLUS:** Michael Barson's kitsch makes history.

72/MUSIC BILLY ALTMAN on the Black Crowes; also Midnight Oil, Indigo Girls, Arrested Development, Santana, Tanita Tikaram, ZZ Top, Skinny Puppy, Rodney Crowell, and Kevin Welch. **PLUS:** Warning labels, obscenity laws, and 2 Live Crew—again.

82/VIDEO TY BURR on *JFK* and *Executive Action*; also *City of Hope*, *Virginia City*, *Company Business*, *Golden Years*, *I Love Lucy's Zany Road Trip*, *Country Gold Volume I*, and a laser-disc of *Haydn at Eszterháza*. **PLUS:** Marlene Dietrich's legacy.

90/KIDS PARENTS' GUIDE to current movies and videos. **PLUS:** More video ratings snafus.

DEPARTMENTS

4/Mail John Goodman, *Cosby*, Concert for Life, Robert Altman.

18/The Biz James Cameron has the clout only money can buy.

20/Trends Soon we'll all be slaves to the ThighMaster.

94/Encore The last chapter in the legend of Howard Hughes—mogul, recluse, lingerie visionary—was opened 16 years ago.

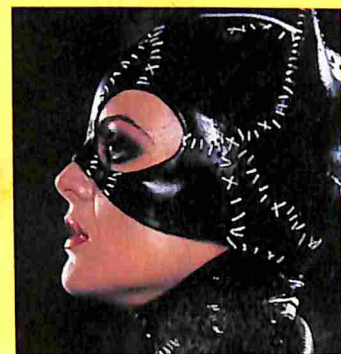
Cover TOM CRUISE: PHILLIP CARUSO; EDDIE MURPHY: BRUCE W. TALAMON; SIGOURNEY WEAVER: BOB PENN; GEENA DAVIS: LOUIS GOLDMAN



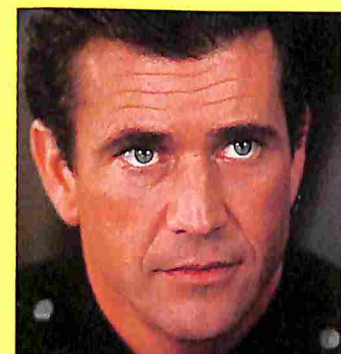
DRAWN TO HER: Gabriel Byrne plays a cartoonist dragged into a strange Cool World by Holli Would (Kim Basinger) in *Cool World*, one of 53 movies in our summer preview

entertainment WEEKLY

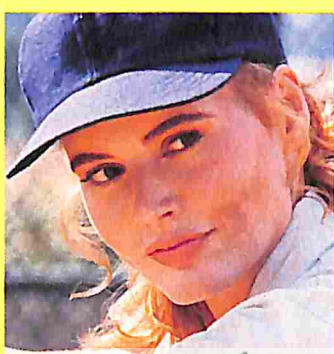
SUMMER



PFEIFFER'S 'BAT' CAT



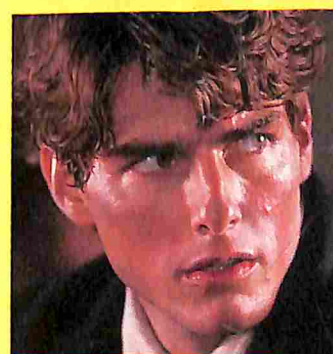
MEL'S NEW 'WEAPON'



GEENA LEADS 'LEAGUE'

MOVIE

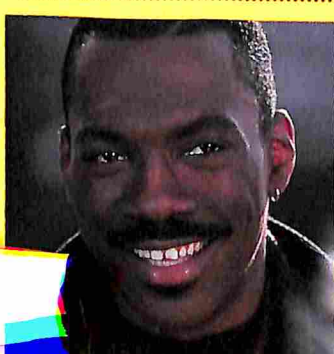
PREVIEW



CRUISE GOING 'FAR'



'ALIEN'



MURPHY'S ROMANCE

AN INSIDER'S GUIDE TO MORE THAN 50 HOT NEW RELEASES

PLUS ON

PL0

MN00RE**FEE

*****5-DIGIT 560

#56001S1M199009M99#4 E5

MINNECOPA SAWMILL

RT 9 BOX 202

MANKATO MN 56001

PL0

07244643

21

2.50