

# Natural History

Vol. LXXVI No. 8

JOURNAL OF THE AMERICAN MUSEUM OF NATURAL HISTORY

October 1967



## YOU CAN'T EVEN STEP IN THE SAME RIVER ONCE

Jerome Lettvin

6

A professor at Massachusetts Institute of Technology, Jerome Lettvin finds cause for concern in his analysis of the "tune in, turn on, drop out" culture of the American hippie.



## A CONSEQUENCE OF TOGETHERNESS

Valerius Geist

24

The author's research on the mountain sheep indicates why these animals have failed to extend their range and expand their numbers on the North American continent.



## THE OWL AND THE ARTIST

32

The owl has long been a favorite subject for artists throughout the world. With photographs and information taken from a new book by Faith Medlin, this article pictures many of the roles in which the bird has been cast.



## NO ONE KNOWS WHERE THE TURTLES GO

Archie Carr

40

After emerging from an egg on a Caribbean beach, how does a baby sea turtle find the ocean? Where does it go once it enters the sea? Despite Archie Carr's extensive research, these questions remain unanswered.

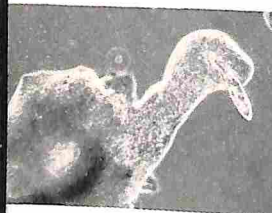


## ON THE SNAKE RIVER LAVAS

Gerald A. Jayne

44

The lava beds of the western United States support a biological community that remains undisturbed by man. The community and its development are explored in a photographic essay by author Gerald A. Jayne.



## CHAOS CHAOS

Eric V. Gravé

48

The one-celled giant amoeba is capable of all the life processes of more complex organisms. Eric V. Gravé pictures the tiny "giant" as it takes in a meal.

## DEPARTMENTS

THE AUTHORS

A NATURALIST AT LARGE

SKY REPORTER

NATURE AND THE CAMERA

BOOKS IN REVIEW

SUGGESTED ADDITIONAL READING

LETTERS TO THE EDITOR

Marston Bates 20

Patricia Caulfield 60

Jane Oppenheimer 62

72

74

## President

Alexander M. White

## Director

James A. Oliver

## Assistant Directors

Walter F. Meister

Joseph M. Chamberlain

## Natural History Press

James K. Page, Jr., Publisher

## Natural History

Robert E. Williamson, Managing Editor

Alfred Meyer, Executive Editor

William Gilman, Senior Editor

Thomas Page, Art Editor

Jack Hope, Associate Editor

Florence Klodin, Copy Editor

Avis Kniffin, Copy Editor

Carol Breslin, Reviews Editor

Lee Boltin, Photography

Emily Guth, Production

Ernestine Weindorf, Contributions

## Editorial Advisers

Gerard Piel, Joseph M. Chamberlain,

Stanley A. Freed, Vincent Manson,

Gordon Reekie, Donn E. Rosen,

Evelyn Shaw

## Advertising

Harvey Oshinsky, Director

Joel Park, Sales

Gregory Wooldridge, Sales

Dinah Lowell, Asst.

## Promotion

Anne Keating, Director

Maureen Fitzgerald, Asst.

## Circulation Manager

Joseph Saulina

The American Museum is open to the public without charge every day during the year. Your support, through membership and contributions, helps make this possible. The Museum is equally in need of support for all of its work in the fields of research, education, and exhibition.

Publication Office: The American Museum of Natural History, Central Park West at 79th Street, New York, N.Y. 10024. Published monthly, October through May; bimonthly June to September. Subscription: \$7.00 a year. In Canada and all other countries: \$7.50 a year. Single copies \$7.00. Second-class postage paid at New York, N.Y., and at additional offices. Copyright 1967 by The American Museum of Natural History. No part of this periodical may be reproduced without the written consent of NATURAL HISTORY. Unsolicited manuscripts and illustrations submitted to the editorial office will be handled with care, but we cannot assume responsibility for their safety. The opinions expressed by authors are their own and do not necessarily reflect the policy of The American Museum. NATURAL HISTORY is indexed in Reader's Guide to Periodical Literature.



October 1967 • 70¢

# Natural History

Gregarious Mountain Sheep

Where Do the Turtles Go?

The Hippie Hang-up

