

GOINGS ON ABOUT TOWN

A CONSCIENTIOUS CALENDAR OF EVENTS OF INTEREST

THE THEATRE

PLAYS AND MUSICALS

A... MY NAME IS ALICE—A musical revue conceived and directed by Joan Micklin Silver and Julianne Boyd. (Top of the Gate, 160 Bleecker St. 982-9292. Tuesdays through Fridays at 8; Saturdays at 7 and 10; and Sundays at 7. Matinées Sundays at 3.)

BALM IN GILEAD—This revival of a play that Lanford Wilson wrote in 1965 is a joint effort of the Steppenwolf Theatre Company of Chicago and the Circle Repertory Company of this city. There are twenty-nine characters—seedy denizens of an all-night coffee shop on upper Broadway. The script—good and bad—foreshadows much of Mr. Wilson's later work. The performance, under the direction of John Malkovich, is electric, to say the least. (Reviewed in our issue of 6/11/84.) (Circle Repertory Company Theatre, 99 Seventh Ave. S., at Sheridan Sq. 924-7100. Tuesdays through Fridays at 8; Saturdays at 7 and 10; and Sundays at 7:30. Matinées Sundays at 3.)

BLUE WINDOW—A comedy by Craig Lucas. (Production Company Theatre, 15 W. 28th St. 686-1470. Tuesdays through Thursdays at 8, and Fridays and Saturdays at 7 and 10.)

COME BACK, LITTLE SHEBA—A revival of a play by William Inge, with Shirley Knight, Philip Bosco, and Mia Dillon. (Roundabout Stage One, 333 W. 23rd St. 242-7800. Tuesdays through Saturdays at 8. Matinées Wednesdays, Saturdays, and Sundays at 2.)

DANNY AND THE DEEP BLUE SEA—John Turturro is the rough truck driver and June Stein the tough young woman who meet in a bar in the Bronx and proceed from there in John Patrick Shanley's melodrama. The strong direction was by Barnet Kellman. (6/18/84) (Circle in the Square Downtown, 159 Bleecker St. 254-6330. Tuesdays through Fridays at 8; Saturdays at 7 and 9; and Sundays at 7. Matinées Sundays at 3.)

DESIGN FOR LIVING—A highly successful revival of Noël Coward's comedy of bad manners and low morals, once played in by Coward and the Lunts and now starring Jill Clayburgh, Raul Julia, and Frank Langella. The excellent direction is by George C. Scott. (7/2/84) (Circle in the Square, 50th St. west of Broadway. 581-0720. Tuesdays through Saturdays at 8. Matinées Wednesdays and Saturdays at 2, and Sundays at 3.)

ENDGAME—A revival of a play by Samuel Beckett, directed by and with Alvin Epstein. (Samuel Beckett Theatre, 410 W. 42nd St. 594-2826. Nightly, except Sundays, at 8. Matinées Wednesdays and Saturdays at 2:30.)

GLENGARRY GLEN ROSS—A well-written, eloquently scatological melodrama about some unscrupulous real-estate salesmen in Chicago. David Mamet is the author and what he knows about Chicago must make Chicagoans nervous. (4/2/84) (Golden, 252 W. 45th St. 239-6200. Nightly, except Sundays, at 8. Matinées Wednesdays and Saturdays at 2.)

GREEK NATIONAL THEATRE—In a one-week engagement of Sophocles' "Oedipus Rex," in modern Greek, with Nikos Kourkoulos. (Vivian Beaumont, Lincoln Center. 787-6868. Wednesday through Saturday, July 18-21, at 8. Matinées Wednesday, July 18, and Saturday and Sunday, July 21-22, at 3.)

HURLYBURLY—David Rabe's wry, brilliant comedy about la vie de bohème in Hollywood is very well performed under Mike Nichols' dynamic direction. William Hurt, Christopher Walken, Judith Ivey, Sigourney Weaver, Jerry Stiller, Cynthia Nixon, and Harvey Keitel make up the first-rate cast.

S	M	T	W	T	F	S
		18	19	20	21	
22	23	24	25	26	27	28

(7/2/84) (Promenade, Broadway at 76th St. 580-1313. Tuesdays through Saturdays at 8. Matinées Wednesdays and Saturdays at 2, and Sundays at 3.)

ISN'T IT ROMANTIC—A spirited production of Wendy Wasserstein's sometimes painful but always witty comedy about a pair of female "best friends" at age twenty-eight, and especially about the trials of one of them, Janie Blumberg. With Barbara Barrie, Lisa Banes, Scottie Bloch, Tom Robbins, Cristine Rose, Alan Rosenberg, and Steven Gilborn. (12/26/83) (Lucille Lortel Theatre, 121 Christopher St. 924-8782. Tuesdays through Fridays at 8; Saturdays at 7 and 10; and Sundays at 7. Matinées Sundays at 3.)

LIGHT OPERA OF MANHATTAN—Presenting Lehár's **THE MERRY WIDOW**. (Eastside, 334 E. 74th St. 861-2288. Wednesdays through Saturdays at 8. Matinées Wednesdays at 2, and Saturdays and Sundays at 3:30.)

THE MISS FIRECRACKER CONTEST—Beth Henley's play about a beauty contest in a small Mississippi town hasn't quite the finesse of her "Crimes of the Heart," but it is just as

original and humorous and talented. Holly Hunter gives a beguiling performance as the contestant. (6/11/84) (Manhattan Theatre Club, 321 E. 73rd St. 472-0600. Nightly, except Sundays, at 8. Matinées Wednesdays and Saturdays at 2:30.)

THE NEST OF THE WOOD GROUSE—Eli Wallach plays a fraudulent Soviet bureaucrat in Victor Rozov's domestic comedy, which aims at satire but settles for entertainment. Mary Beth Hurt, Rosemary De Angelis, Dennis Boutsikaris, and Anne Jackson are among the supporting actors. The play is a long-running hit in Russia. (6/25/84) (Public, 425 Lafayette St. 598-7150. Nightly at 8. Matinées Saturday and Sunday at 3. Closes Sunday, July 22.)

NITE CLUB CONFIDENTIAL—An amiable salute—tongue in, tongue out of cheek—to night clubs in the fifties, with new songs written for the occasion by Dennis Deal and Albert Evans, and old ones by, among others, Harold Arlen, Frank Loesser, and Johnny Mercer. The music sounds fine, and the company is able and agreeable; Tom Spiroff is, for a few brief, shining moments, a knockout as Elvis Presley. (Ballroom Theatre, 253 W. 28th St. 594-0326. Tuesdays through Thursdays at 8; Fridays at 8 and 11; Saturdays at 7 and 10; and Sundays at 7:30.)

NOISES OFF—The funniest, fastest-moving farce in many a long year, written by a Martian named Michael Frayn. (12/19/83) (Brooks Atkinson, 256 W. 47th St. 245-3430. Night-

TABLE OF CONTENTS

THE TALK OF THE TOWN	25
"THE KINGFISHER"	31
"SPEECH FROM A NOVELLA" (POEM)	31
"WEATHER"	32
"TO CALABRIA"	34
"ON THE SOUL" (POEM)	36
A REPORTER AT LARGE (FAMILY DOCTORS)	38
JAZZ	40
THE CURRENT CINEMA	86
MUSICAL EVENTS	92
BOOKS	96
BRIEFLY NOTED	104
COVER: Gretchen Dow Simpson	107

DRAWINGS: Richard Cline, Warren Miller, Dana Fradon, Lee Lorenz, Arnie Levin, William Hamilton, Michael Maslin, Henry Martin, Barney Tobey, Robert Weber, Frank Modell, George Price, Joseph Farris, Joseph Mirachi, Gahan Wilson, Charles Barsotti, Mischa Richter, James Stevenson

THE NEW YORKER

25 WEST 43RD STREET, NEW YORK, N.Y. 10036
(212) 840-3800

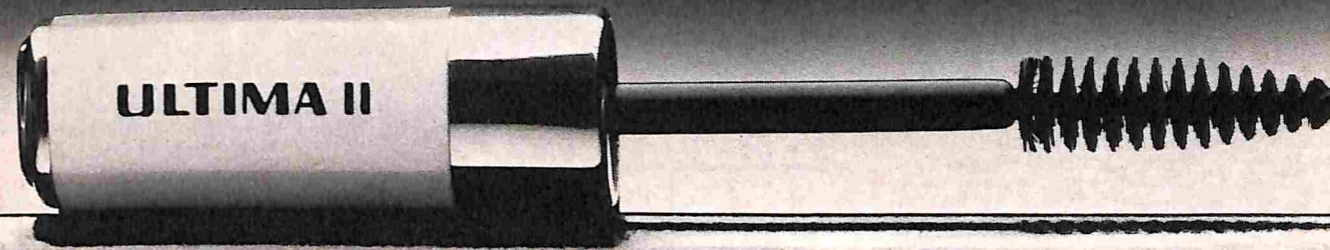
CHANGE OF ADDRESS

In ordering a change of address, subscribers should give four weeks' notice, providing both old and new addresses, with Zip Codes. If possible, please send the address label from a recent issue.

THE NEW YORKER (ISSN 0028-792X), published weekly by The New Yorker Magazine, Inc., 25 W. 43rd St., N.Y., N.Y. 10036; Peter F. Fleischmann, chairman; J. Kennard Bosee, president; Milton Greenstein, Sam R. Spoto, Robert F. Young, vice-presidents; Elaine M. Matteo, treasurer & secretary; Stuart H. Jason, comptroller. Branch advertising offices: 111 East Wacker Drive, Chicago, Ill. 60601; 155 Montgomery St., San Francisco, Calif. 94104; Suite 2360, 5900 Wilshire Blvd., Los Angeles, Calif. 90036; 1175 Peachtree St. N.E., Atlanta, Ga. 30361; 67½ Chestnut St., Boston, Mass. 02108; 21 Grosvenor St., London, W1X 0ED. Vol. LX, No. 23, July 23, 1984. Second-class postage paid at New York, N.Y., and at additional mailing offices. Authorized as second-class mail by the Post Office Department, Ottawa, Canada, and for payment of postage in cash. © 1984 by The New Yorker Magazine, Inc., in the United States and Canada. All rights reserved. No part of this periodical may be reproduced without the consent of The New Yorker. Printed in U.S.A. Subscription rates: In U.S. and possessions, one year, \$32.00; two years, \$52.00. In Canada, one year, \$44.00. Other foreign, \$52.00. POSTMASTER: Send address changes to The New Yorker, 25 W. 43rd St., New York, N.Y. 10036.

Something very important is missing from new Advanced Formula Mascara.

Irritants.



Yet it's truly waterproof, rubproof, runproof, flakeproof and smudgeproof.

And it comes off with soap and warm water (not oil).

Proof comes from clinical testing by leading ophthalmologists and optometrists on contact lens wearers.

They found it to be exceptionally gentle and incredibly beautiful on even the most sensitive eyes.*

ADVANCED FORMULA MASCARA
only from

ULTIMA II

© 1984 Charles Revson, Inc.

*Eyes that irritate easily.

Calvin Klein's textured leathers
on straightforward buckles.
Simply perfect.

July 23, 1984

You'll need a good leather belt to balance the stronger proportions of your man-tailored tweeds and twills this fall. Here three by Calvin Klein for Omega. Their absolute style lies in perfect simplicity. Come gather at Collectibles, main floor of the store that's all geared up for fall.

From the left:
2 1/2 inch soft leather with a double-prong brass buckle. Ginger, black or loden green, \$4.00. Winter white or gray whipstake 1 1/2 inch with a natural horn buckle, \$2.00. "Croco" look embossed leather 1 1/2 inch belt with an antiqued gold-look brass buckle. Black or brown, 50.00. All, S/M or M/L.

MasterCard.com
Vintage Magazines for Special People

Blattman & Co

It's always a pleasure

Out of town, call Toll Free (800) 228-5444. In Nebraska (800) 642-8777. Diners Club American Express® Visa® and MasterCard™ are welcome at Blattman's, 361 Fifth Avenue, New York, N.Y. 10016, White Plains, Manhasset, N.Y., Short Hills, Ridgewood/Paramus, N.J., St. Davids, Willow Grove Park, Pa.