



THE NEW YORKER

TABLE OF CONTENTS MAY 6, 1991

GOINGS ON ABOUT TOWN 4

THE TALK OF THE TOWN 31

"FALLING ASLEEP UP NORTH" 36

"FOR ALL THOSE WHO WAIT FOR TIME TO PASS" (POEM) *John Updike* 36

"EASY KEEPER" *Lars Gustafsson* 38

ANNALS OF GOVERNMENT (THE VIETNAM YEARS—PART I) *Mary Tannen* 40

"THE SEA OF SERENITY" (POEM) *Clark Clifford with Richard Holbrooke* 44

THE THEATRE *Jean Valentine* 46

THE CURRENT CINEMA *Edith Oliver* 81

PHOTOGRAPHY *Terrence Rafferty* 82

LETTER FROM WASHINGTON *Ingrid Sischy* 86

BOOKS *Elizabeth Drew* 97

BRIEFLY NOTED *Naomi Bliven* 104

COVER: *William Waitzman*

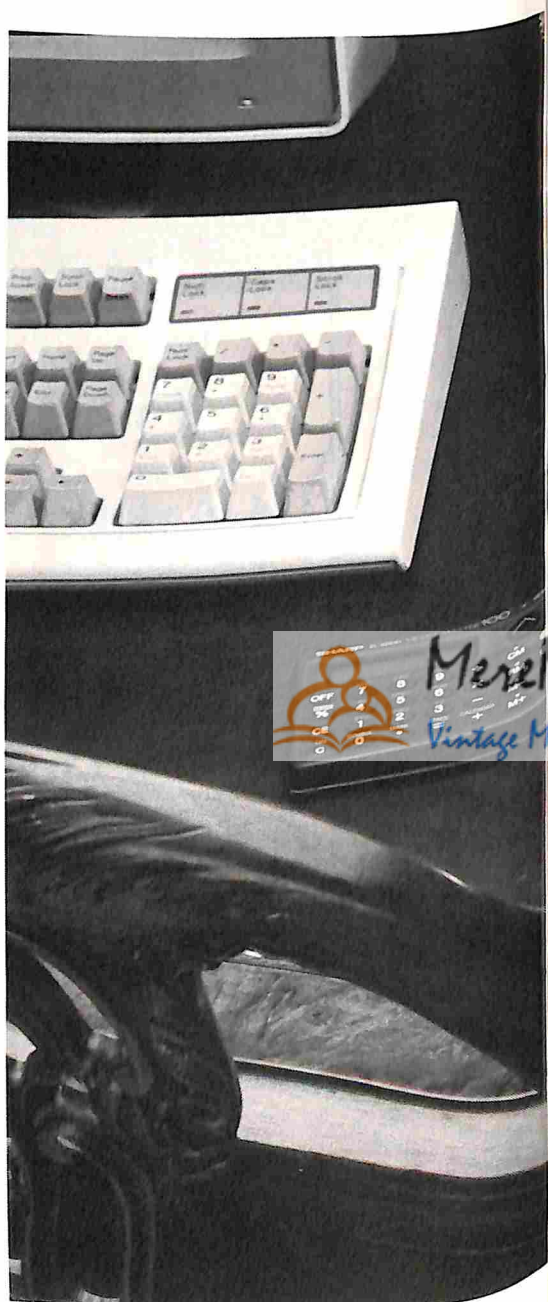
DRAWINGS: *Donald Reilly, James Stevenson, William Hamilton, Dana Fradon, Mischa Richter, Edward Koren, Mick Stevens, Robert Mankoff, Danny Shanahan, Gahan Wilson, John O'Brien, Ronald Searle, Richard Cline, J. B. Handelsman, Anthony Taber, Al Ross, Stephanie Skalisky, Jack Ziegler, Arnie Levin, Eldon Dedini, Victoria Roberts*

THE NEW YORKER
20 WEST 43RD STREET, NEW YORK, N.Y. 10036
(212) 840-3800

SUBSCRIPTION SERVICE

To inquire about a subscription or to change an address, please write to The New Yorker, Box 56447, Boulder, Colorado 80322, or telephone 1-800 825-2510 (in Colorado 303 447-9330). For a change of address, subscribers should give four weeks' notice. If possible, please send the address label from a recent issue.

THE NEW YORKER (ISSN 0028-792X), published weekly by The New Yorker Magazine, Inc., 20 W. 43rd St., N.Y., N.Y. 10036; Steven T. Florio, president and chief executive officer; Ruth A. Diem, vice-president and human resources director; Frank Mustacato, vice-president and circulation director; Virginia L. Jespersen, vice-president and general manager/cfo; Lynn Guthrie Heiler, vice-president and marketing director; Matthew D. Roberts, vice-president and marketing director; Pamela H. Older, vice-president and director of manufacturing; Martha Kaplan, vice-president. Branch advertising offices: 111 East Wacker Drive, Chicago, Ill. 60601; 41 Osgood Place, San Francisco, Calif. 94133; Suite 1460, 5900 Wilshire Blvd., Los Angeles, Calif. 90036; 67½ Chestnut St., Boston, Mass. 02108; 19 South Audley St., London, W1Y 5DN. Metropolitan Publishers Representatives: 3017 Piedmont Road, NE, Atlanta, Ga. 30305; 2500 So. Dixie Highway, Miami, Fla. 33133; 3016 Mason Place, Tampa, Fla. 33629; 3 Church St., Suite 503, Toronto, Canada. MSE 1M2. Carol Orr & Co., Publishers Representative: 3300 Oak Lawn, Suite 500, Dallas, Tx. 75219. Vol. LXVII, No. 11, May 6, 1991. Second-class postage paid at New York, N.Y., and at additional mailing offices. Authorized as second-class mail by the Post Office Department, Ottawa, Canada, and for payment of postage in cash. Canadian goods and services tax registration number R123242885. © 1991 by The New Yorker Magazine, Inc., in the United States and Canada. All rights reserved. No part of this periodical may be reproduced without the consent of The New Yorker. The magazine's name, logo, and various titles and headings herein have been registered with the Patent and Trademark Office. Printed in U.S.A. Subscription rates: In U.S. and possessions, one year, \$52.00. In Canada, one year, \$56.00. Other foreign, one year, \$66.00, payable in advance. Send address changes to The New Yorker, Box 56447, Boulder, Colorado 80322.



Schwab wrote the book on how to find a Financial Advisor.

As your capital multiplies, so does the time and skill it takes to invest.

If you're like many investors, you might prefer professional guidance. At Schwab, we recommend getting objective advice that's free of sales pressure. So we wrote this book to help you find an expert—one who's concerned with *your* best interests.

The Charles Schwab Guide to Selecting a Financial Advisor gives you the information you need to single out which advisor feels right to you.

Here are the key questions to ask. Plus a few tips to help you assess whether their style and strategies are compatible with your financial goals.

This guide also includes a directory with addresses, phone numbers and stated investment philosophies of over 250 advisors.

If you'd appreciate help managing your money, call now for your free copy of the new, expanded edition of *The Charles Schwab Guide to Selecting a Financial Advisor*.

*Charles Schwab & Co., Inc. does not endorse or recommend any particular advisor. None of these Financial Advisors are employed by Charles Schwab & Co., Inc.

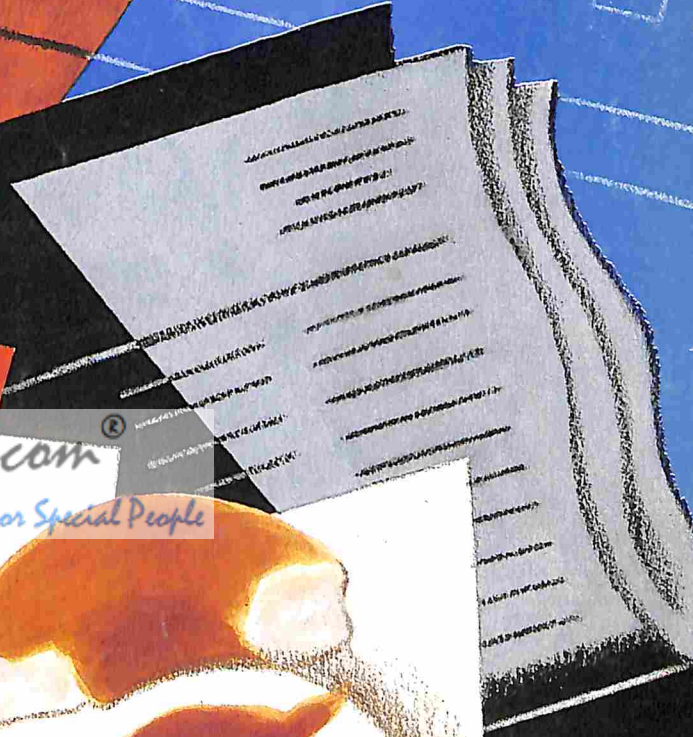
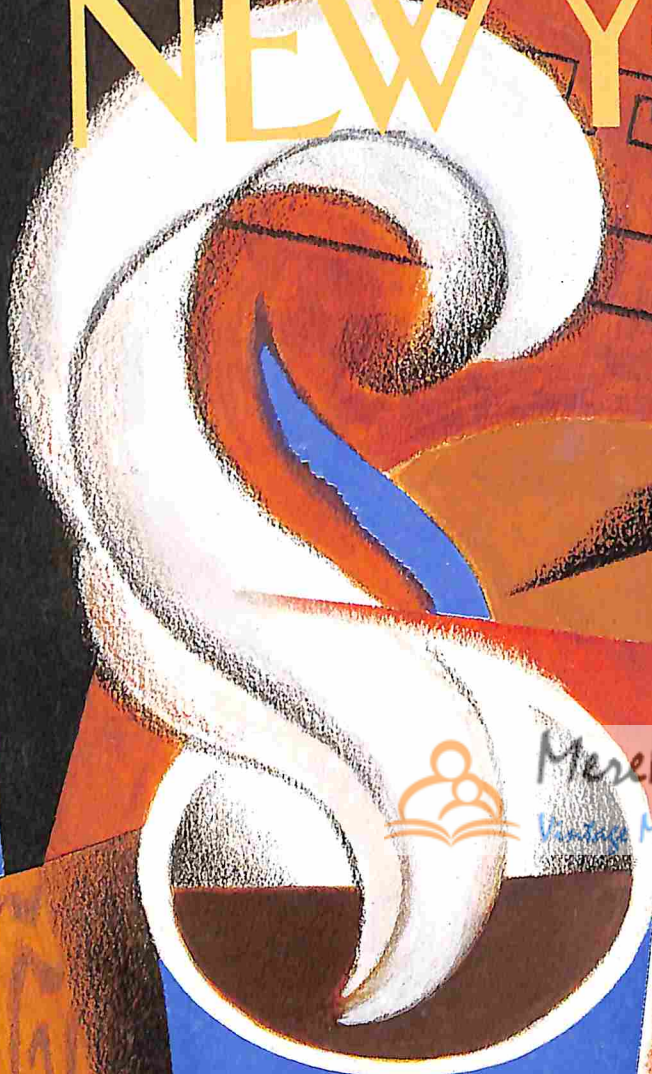
**Call now, toll-free:
800-262-7200**

Charles Schwab

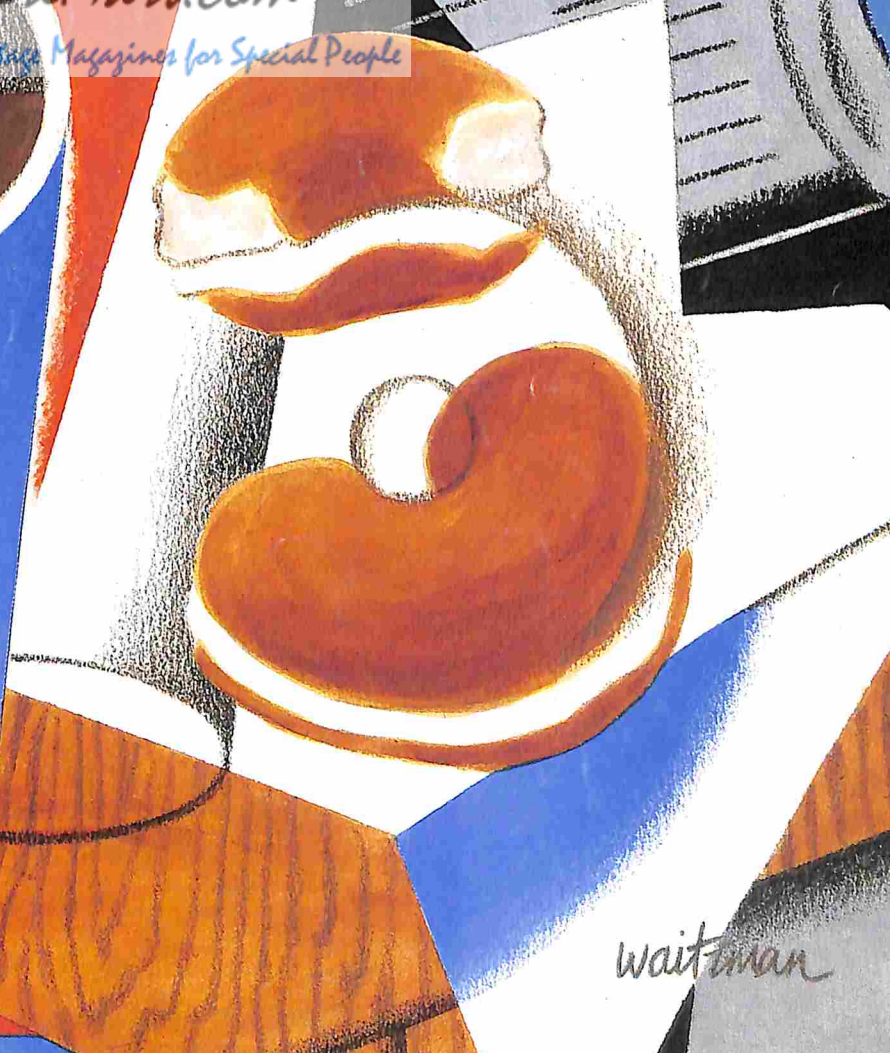
May 6, 1991

Price \$1.75

THE NEW YORKER



MereMart.com
Virtual Magazines for Special People



waitman