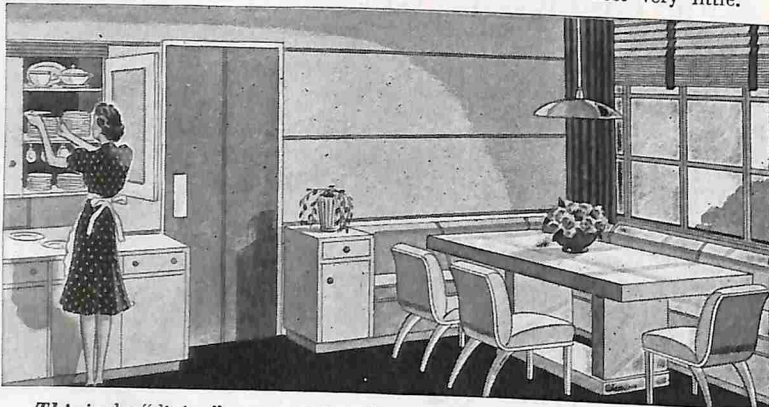


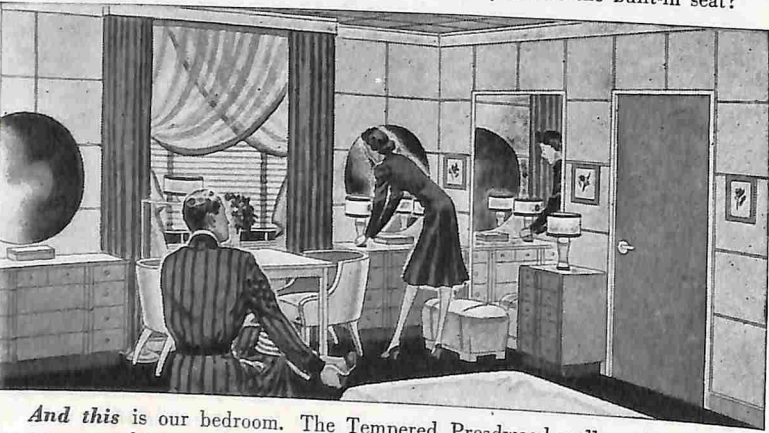
"We've built the 'biggest' little house in town"



Actually, our new home is tiny, but we've gotten so much in such a small space, you really ought to see how roomy it is. This is the "living" portion of our combined living room-dining room. We used Masonite Tempered Presdwood for the walls and ceilings and most of the built-in furniture. Tempered Presdwood is that all-wood grainless board everybody seems to be using today to get results that look expensive but cost very little.



This is the "dining" corner with built-in cabinets and sideboard of Masonite Tempered Presdwood. The china cabinet is loaded with dishes from the kitchen side. Used dishes are passed into the kitchen through a Tempered Presdwood door in the recess below. Really, you can do so many things with Tempered Presdwood! It can be painted or enameled, and our wall designs are grooved right in its surface. Don't you like the built-in seat?



And this is our bedroom. The Tempered Presdwood walls and ceilings are grooved in a modern block pattern. Our dressing-tables are both made of Tempered Presdwood, which is moisture-resisting, and won't warp, chip, split or crack when it's properly used. Yet they can cut or saw it easily.

• If you're thinking of building a new home, or remodeling your present home, you'll certainly want to find out all about Masonite Tempered Presdwood.

MAIL THIS COUPON FOR FREE SAMPLE—

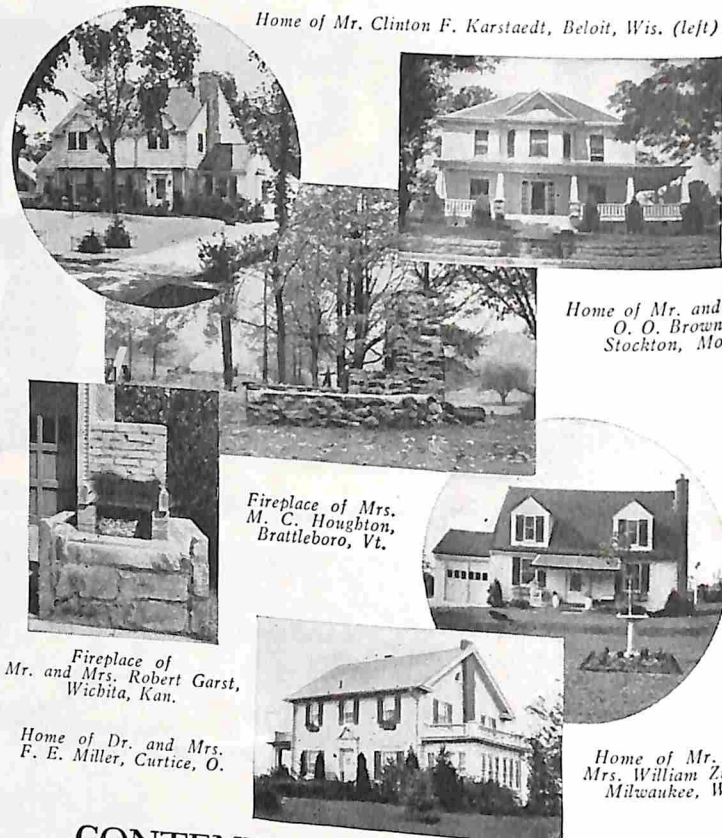
MASONITE CORPORATION
Department AH-7
111 W. Washington St.
Chicago, Illinois

☐ Without cost or obligation, please send me free sample and complete information about Masonite Tempered Presdwood.

MASONITE TEMPERED PRESWOOD

THE WONDER WOOD OF A THOUSAND USES
Sold by lumber dealers everywhere

Name _____
Address _____
City _____ State _____



CONTENTS, Continued from page 4

Spring Song	Clara B. Dean	43
Slaves of the Stuff	Ellen B. Miller	44
American Home Achievement Medals—1939		45
To Have or Not to Have a Dining Room?		
Housecleaner's Bridge	Jennie Moore and Earl Lifsbey	46
Give an Easter Dance That's Different!	Grace MacIvath Ellis	48
An Oriental Dinner	Dorothy Gladys Spicer	49
Four Little Recipes and How They Grew	Merle Lamborn	50
Information, Please!		51
A. H. to the Rescue!		52
Spring Tonics for the Kitchen		53
A Cottage for Two by Two		54
Campus Houses under \$4,000		55
A "Splash" from the Skillet of a Suburban Housewife		56
Spruce Up for Spring!		57
Leaves from a Junk-Snooper's Journal		58
Buying the Site is Serious Business		59
Finishing Furniture as a Hobby		60
How a Shack Became a Cottage!		61
Gourd Growing		62
Evidence on Paper		63
Home of Mr. and Mrs. George Cooper Taylor, Glen Ellyn, Ill.		64
Home of Mr. and Mrs. William H. Gottwald, Peoria, Ill.		65
Home of Mr. and Mrs. Paul J. Sevenick, Everett, Wash. (above)		66
Home of Mr. and Mrs. W. G. Hall, Birmingham, Ala.		67



MRS. JEAN AUSTIN, Editor

CHARLOTTE E. CONWAY, Associate Editor
JULIA BOURNE, HOME ECONOMIST
MARY E. MONZE, Decorating Inquiries

FREDERICK S. PEARSON, 2ND, Managing Editor
E. L. D. SEYMOUR, Horticultural Editor
W. M. MEHLHORN, Building Inquiries

Letters requesting information should be accompanied by a stamped, addressed envelope

Published monthly by The American Home Magazine Corporation. W. H. Eaton, President-Treasurer, Henry L. Jones, Vice-President, Jean Austin, Secretary, Executive, Editorial and Advertising Headquarters, 444 Madison Avenue, New York. Subscription Department, 251 Fourth Avenue, New York. Branches for advertising only: 248 Boylston Street, Boston, Mass.; 360 North Michigan Avenue, Chicago, Ill.; A. D. McKinney, 915 Olive St., St. Louis, Mo.; W. F. Coleman, 530 West 6th Street, Los Angeles, Calif.; California Street, San Francisco, Calif.; Home Magazine Corporation. All rights reserved. Title registered in U. S. Patent Office.

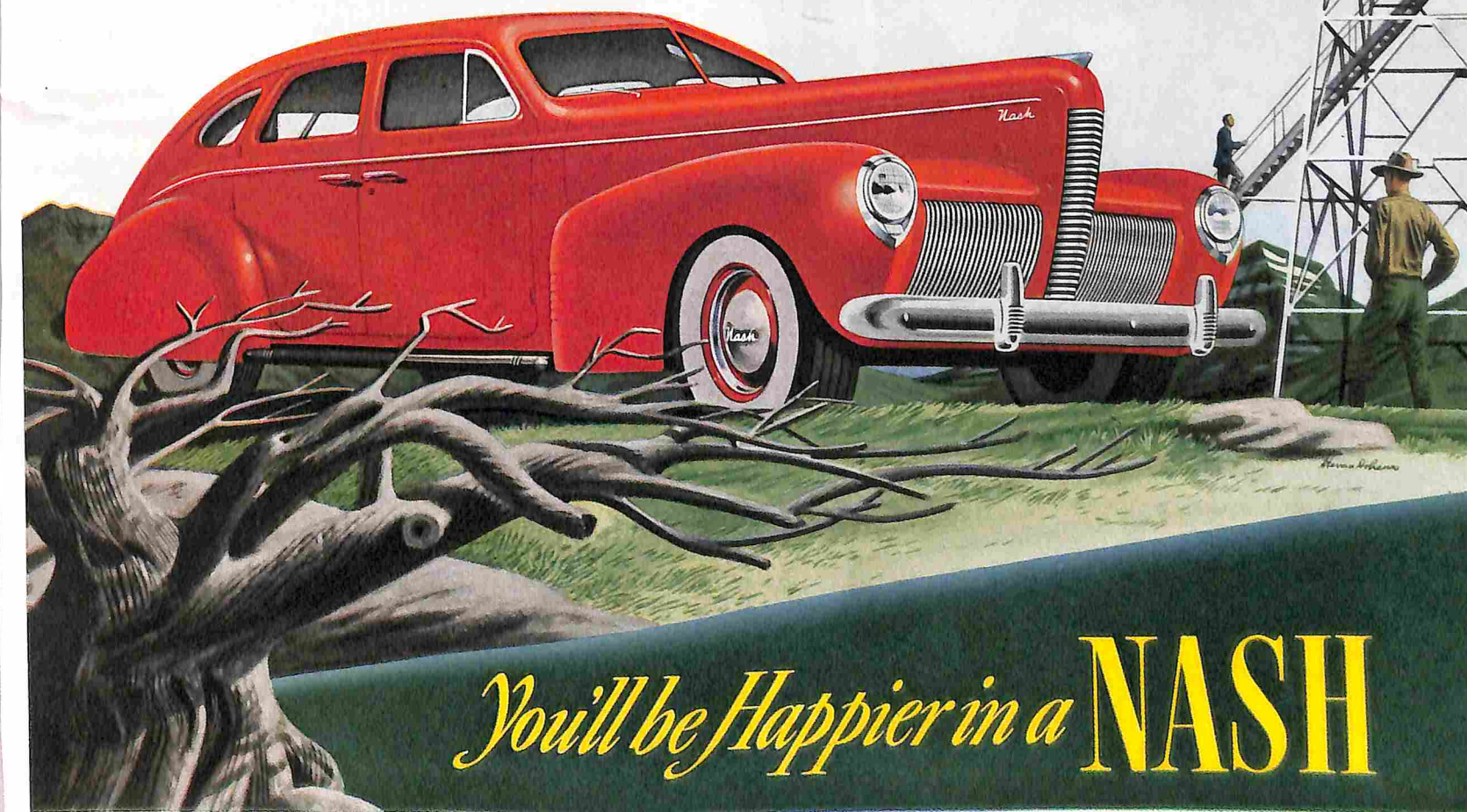
THE AMERICAN HOME, APRIL, 1940



ENJOY FLORIDA WARMTH inside your Nash. Uncanny Weather Eye System keeps you free of drafts, dust, cold . . . pours in a balmy breeze of fresh, conditioned air. Nash's 99 H. P. manifold-sealed engine gives you same smooth power and flashing starts, winter or summer.



BE A VAGABOND on week-ends and vacations. Convertible bed in the rear holds two, cuts touring costs. Long cross-country trips are easier with Nash's amazing Arrow-Flight Ride. It's a better buy because our \$45,000,000 resources are concentrated on one make of car.



You're only Human After all

YOU THOUGHT you were old, and beyond those things — when zingo! You lose your heart on the first day of spring!

It's the wink of chromium that undoes you. You look—and it's a Nash—with such flash and dash, joy and life packed into its eager frame—that it can't wait, and neither can you!

Next thing you know, you're grabbing your hat. For just one engine in the world has that "fire-on-four-wheels" feeling—it's Nash manifold-sealed power.

Then—what about this swift, silent pace you're setting? Surely that's no conventional third gear. And you're right—you're in a Fourth Speed Forward.

But wait—nudge the throttle a little harder. That new Automatic Overtake makes you think you've hooked on to a comet!

If the air feels warmer, fresher—don't give Nature the credit. It's that new Nash automatic Weather Eye up front, making and maintaining weather to order.

Suddenly—you want to yell

"whoa"! A stretch of washed out road ahead! But—like oil on troubled water—Nash's new springing magically irons out a glassy-smooth course.

You never felt such eager response. You can turn it on a quarter . . . stop on a dime . . . aim it like a rifle to the spot you want to go.

It's then you know—that you and a Nash were made for each other!

Here's the beginning of a beautiful friendship . . . good for the best 100,000 miles of a man's life.

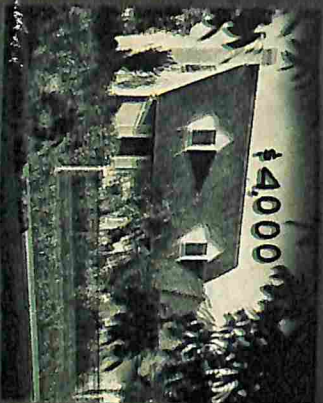
For a Nash is built that way . . . with a seven-bearing crankshaft (instead of 3), a double frame . . . 300 to 400 more pounds of finer steel, for safety and long life. That Nash below is the 1940 economy champion in its class (Gilmore-Yosemite Run—23.76 miles to a gallon.) Drive it—see how young you really are!

LOWER PRICES: from \$795—delivered at Factory! 4-door Sedan (below) \$875, includes Standard Equipment, Federal Taxes • White Sidewall Tires, Weather Eye, Rear Wheel-Shields, Fourth Speed, optional extras.

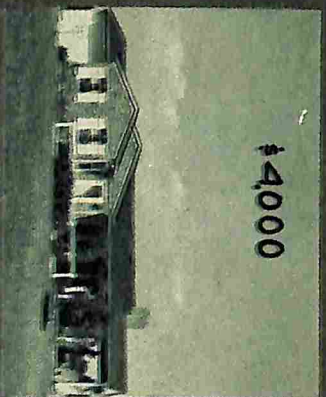
\$795

You'll be Happier in a NASH

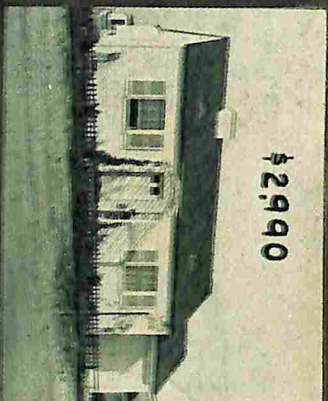
The AMERICAN HOME 10¢



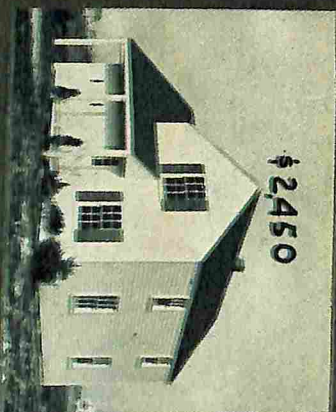
\$4000



\$4000



\$2990



\$2450

14 HOUSES \$4000 AND UNDER

E 6539
MRS RUSSELL WEBSTER
R R 1
LAFAYETTE MINN

40