

COPYRIGHT UNDER INTERNATIONAL COPYRIGHT CONVENTION. ALL RIGHTS RESERVED UNDER PAN-AMERICAN COPYRIGHT CONVENTION. COPYRIGHT 1949 BY TIME INC.

CONTENTS

THE WEEK'S EVENTS

- DPs COMPLETE A YEAR IN THE U.S.11
- HOUSEWIFE WINS \$50,000 IN NATIONAL "BAKE-OFF".....16
- ROCKEFELLER CENTER AND MEXICO CELEBRATE CHRISTMAS.....18
- NEW YORK OBSERVES WATERLESS DAY.....19
- EDITORIAL: THE GREATEST GIFT.....20
- THE FUTURE LOOKS FINE TO CHURCHILL.....23

PICTORIAL ESSAY

- MICHELANGELO'S SISTINE CHAPEL.....25

ARTICLE

- THE FRUITFUL MOUNTAINEERS, by T. S. HYLAND.....60

EDUCATION

- KIDS PORTRAY POP.....50

SCIENCE

- ELECTRICITY WITHOUT WIRES.....52

ART

- CHRISTMAS CARD CONTEST DRAWS STRANGE ASSORTMENT.....55

MOVIES

- THREE GOBS ON THE TOWN.....58

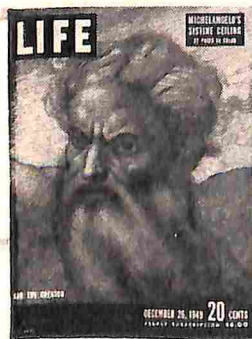
THEATER

- "GENTLEMEN PREFER BLONDES".....68

OTHER DEPARTMENTS

- LETTERS TO THE EDITORS.....2
- SPEAKING OF PICTURES: "U.S. CAMERA" PUBLISHES PORTFOLIO OF INTERNATIONAL PHOTOGRAPHS.....4
- LIFE GOES TO OPENING OF THE CARIBBEAN'S FANCIEST HOTEL.....72

THE COVER AND ENTIRE CONTENTS OF LIFE ARE FULLY PROTECTED BY COPYRIGHTS IN THE UNITED STATES AND IN FOREIGN COUNTRIES AND MUST NOT BE REPRODUCED IN ANY MANNER WITHOUT WRITTEN PERMISSION

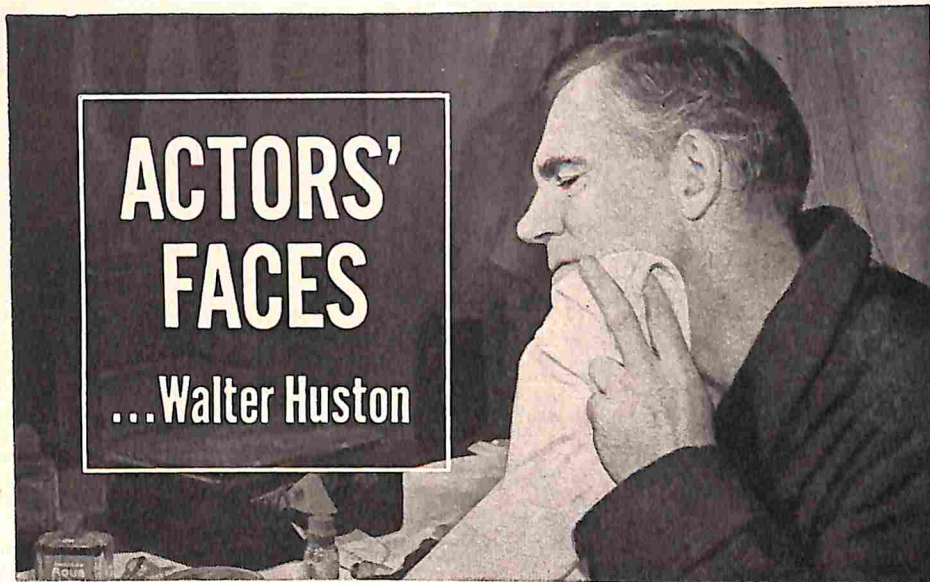


LIFE'S COVER

The portrayal of God the Creator on the cover is a detail from one of Michelangelo's murals on the ceiling of the Sistine Chapel illustrating the Creation of the Sun and Moon (pp. 28-29). In it the artist recognized the fundamental Christian doctrine of God's oneness with man. Since God created man in His own image, as is stated in the book of Genesis, Michelangelo conceived of God as a magnificent and heroic human. Yet at the same time He appears as a spiritual being whose superbly forceful expression comes as close as any painting has ever done to representing the all-powerful and divine.

The following list, page by page, shows the source from which each picture in this issue was gathered. Where a single page is indebted to several sources, credit is recorded picture by picture (left to right, top to bottom) and line by line (lines separated by dashes) unless otherwise specified.

- COVER—FRANK LERNER, LERNER-RAYMOND
- 2—ROBERT LAVALLE FOR THE INDIANAPOLIS NEWS
- 3—CULVER SERVICE
- 4 THROUGH 7—COURTESY U.S. CAMERA ANNUAL 1950
- 11—INT. GORDON COSTER
- 12—ALBERT FENN—YALE JOEL—ALFRED EISENSTAEDT FROM PIX, ROBERT W. KELLEY
- 13—ALFRED EISENSTAEDT FROM PIX, CARL PERUTZ—ALFRED EISENSTAEDT FROM PIX—ROBERT W. KELLEY (3)
- 14, 15—RALPH CRANE FROM B.S. EXC. T. CEN. CORNELL CAPA
- 16, 17—L. MARTHA HOLMES; LISA LARSEN (2)—HERBERT GEHR, RT. HERBERT GEHR
- 18—ANDREAS FEININGER—ENRIQUE DIAZ AND FELIPE MORALES
- 19—LT. A.P.—N.Y. DAILY NEWS—N.Y. JOURNAL-AMERICAN FROM INT. RT. ANDREAS FEININGER
- 20—BERNARD HOFFMAN—BROWN BROS.
- 23—EVENING STANDARD, WORLD COPYRIGHT—GRAPHIC PHOTO UNION—ACME—KEYSTONE
- 25—FRANK LERNER, LERNER-RAYMOND
- 26—COURTESY "DESSINS DE MICHELANGE" PUBLISHED BY LA CITE DES LIVRES, PARIS, 1930
- 27 THROUGH 48—FRANK LERNER, LERNER-RAYMOND
- 49—N. R. FARBMAN
- 50, 51—ALBERT FENN
- 52—ALBERT FENN
- 57—N. R. FARBMAN
- 58, 59—LT. ALFRED EISENSTAEDT FROM PIX, CEN. EILEEN DARBY FROM G.H., RT. JON BRENNIS FROM CAL-PICTURES—ALFRED EISENSTAEDT FROM PIX
- 60, 61—ELIOT ELISOFON
- 62, 63—ELIOT ELISOFON EXC. MAPS BY ANTHONY SODARO AND FRANK STOCKMAN
- 64, 65, 66, 67—ELIOT ELISOFON
- 68, 69—PHILIPPE HALSMAN
- 70, 71—PHILIPPE HALSMAN EXC. DRAWING BY RALPH BARTON FROM "GENTLEMEN PREFER BLONDES" BY ANITA LOOS
- 72, 73, 74—GORDON PARKS



ACTORS' FACES

...Walter Huston

Actors' faces are extra-sensitive

THAT'S WHY WALTER HUSTON SHAVES WITH SOOTHING WILLIAMS

"Taking off make-up leaves my face sensitive," says Walter Huston, famous Broadway and Hollywood star, shown above in his dressing room. "That's why I swear by Williams Shaving Cream. It's a star beard softener—yet it never irritates my tender face."

Smooth, comfortable shaves Williams is so easy on the face because it's made from bland, top-quality ingredients, blended with a skill resulting from over 100 years' experience. Its mild, creamy lather lets you shave close and

clean with perfect after-shave comfort. It leaves you looking and feeling your young, healthy best.

Lather or brushless? If you prefer a brushless shave, you'll find the same luxurious shaving cream qualities in the new richer Williams Brushless Cream.



buy
christmas seals
help
stamp out TB

PAIN

of headache, neuritis, and neuralgia

RELIEVED

incredibly fast
the way thousands of physicians and dentists recommend—

ANACIN

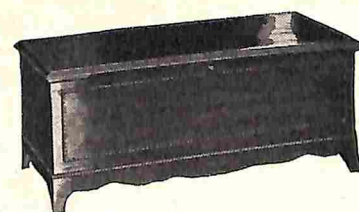
Here's why

Anacin is like a doctor's prescription. That is, it contains not one but a combination of medically proved ingredients. Get Anacin Tablets today.



THE PERFECT GIFT TO SAY

"I Love You"



No. 2218—Traditional design in lustrous hand-rubbed Mahogany veneers. Tray included. \$59⁹⁵

LANE CEDAR HOPE CHEST

Perfect for Weddings • Birthdays
Anniversaries • Confirmation
Graduation • Engagements

It's Not Too Late

to make Christmas dreams come true for sweetheart, wife, daughter, sister, or mother! Visit your Lane dealer—choose your love-gift today.

There is a Lane for every room, with exteriors in all popular woods and finishes to harmonize with all types of furniture. Guaranteed Moth Protection. At all fine furniture and department stores.

LIFE

**MICHELANGELO'S
SISTINE CEILING
22 PAGES IN COLOR**

 **MereMart.com**[®]
Gift Quality Vintage Magazines

GOD THE CREATOR