

# GOINGS ON ABOUT TOWN

A CONSCIENTIOUS CALENDAR OF EVENTS OF INTEREST

## THE THEATRE

### PLAYS AND MUSICALS

**A...MY NAME IS ALICE**—A musical revue conceived and directed by Joan Micklin Silver and Julianne Boyd. (Top of the Gate, 160 Bleecker St. 475-5120. Tuesdays through Fridays at 8; Saturdays at 7 and 10; and Sundays at 7. Matinees Sundays at 3.)

**AND A NIGHTINGALE SANG...**—A pleasant comedy about life in England during the Second World War. Written by C. P. Taylor and directed by Terry Kinney. (Reviewed in our issue of 12/12/83.) (Mitzi E. Newhouse Theatre, Lincoln Center. 799-9100. Nightly, except Sundays, at 8. Matinees Wednesdays and Saturdays at 2.)

**AWAKE AND SING!**—A revival of a play that is almost half a century old and that shows its age. Still, what a pleasingly ardent and optimistic writer Odets was at twenty-eight! The present production fails him on almost every count. (3/19/84) (Circle in the Square, 50th St. west of Broadway. 581-0720. Tuesdays through Saturdays at 8. Matinees Wednesdays and Saturdays at 2, and Sundays at 3.)

**BABY**—Everything you may not have wanted to ask about having a baby—a cheering musical for doctors if not for lay people. (12/12/83) (Ethel Barrymore, 243 W. 47th St. 239-6200. Tuesdays through Saturdays at 8. Matinees Wednesdays and Saturdays at 2, and Sundays at 3.)

**LA CAGE AUX FOLLES**—A dazzling production of a musical that has little wit and a lot of phony sentimentality about the tenderhearted family life of homosexuals. The music, by Jerry Herman, is Broadway-romantic. The two superb stars are George Hearn and Gene Barry. (9/5/83) (Palace, Broadway at 47th St. 757-2626. Nightly, except Sundays, at 8. Matinees Wednesdays and Saturdays at 2.)

**CINDERS**—This play, by the exiled Polish dramatist Janusz Glowacki, is set in a girls' reform school whose Orwellian atmosphere is enhanced by the arrival of a film director and his crew to make a documentary movie based on "Cinderella." With Lucinda Jenney, Robin Gammell, and George Guidall, among others. (3/5/84) (Public, 425 Lafayette St. 598-7150. Nightly at 8. Matinees Saturday and Sunday at 3. Closes Sunday, April 8.)

**CIRCLE REPERTORY COMPANY**—A play written and directed by John Bishop, **THE HARVESTING**, is the fourth in this season's series. (Circle Repertory Company Theatre, 99 Seventh Ave. S., at Sheridan Sq. 924-7100. Tuesdays through Saturdays at 8, and Sundays at 7. Matinees Saturdays at 2 and Sundays at 3. Closes Sunday, April 29.)

**DEATH OF A SALESMAN**—Arthur Miller's thirty-five-year-old play about a sorry little failed salesman from Brooklyn remains as affecting as ever in this admirable production. The big cast is headed by Dustin Hoffman and, yes, he is just as memorable as Lee J. Cobb in the role of Willy Loman. (Reviewed in this issue.) (Broadhurst, 235 W. 44th St. 239-6200. Tuesdays through Saturdays at 8. Matinees Wednesdays and Saturdays at 2, and Sundays at 3.)

**FEN**—In spite of fine performances by Pamela Reed, Ellen Parker, and David Strathairn, among other American actors, Caryl Churchill's play about a farming community in East Anglia has lost some of its original mystery and force. Even so, there are many good scenes. Les Waters was the excellent director. (Public, 425 Lafayette St. 598-7150. Nightly, except Mondays, at 8. Matinees Saturdays and Sundays at 3.)

**THE FLIGHT OF THE EARLS**—A play by Christopher

S	M	T	W	T	F	S
8	9	10	11	12	13	14

Humble, with Christine Estabrook and Timothy Landfield. (Westside Arts, 407 W. 43rd St. 541-8394. Tuesdays through Saturdays at 8. Matinees Wednesdays and Saturdays at 2, and Sundays at 3.)

**FRATERNITY**—A play by Jordan Budde. (Colonades, 428 Lafayette St. 673-2222. Thursday through Saturday at 8, and Sunday at 7:30. Matinee Sunday at 3. Closes Sunday, April 8.)

**GLENGARRY GLEN ROSS**—A well-written, eloquently scatological melodrama about some unscrupulous real-estate salesmen in Chicago. David Mamet is the author and what he knows about Chicago must make Chicagoans nervous. (4/2/84) (Golden, 252 W. 45th St. 239-6200. Nightly, except Sundays, at 8. Matinees Wednesdays and Saturdays at 2.)

**THE GOLDEN AGE**—A new play by A. R. Gurney, Jr., with Irene Worth, Stockard Channing, and Jeff Daniels. John Tilling is the director. Previews through Wednesday, April 11. Opens officially on Thursday, April 12. (Jack Lawrence Theatre, 359 W. 48th St. 307-5452. Tuesdays through Saturdays at 8;

opening-night curtain at 6:45. Matinees Wednesdays and Saturdays at 2, and Sundays at 3.)

**A HELL OF A TOWN**—Peter Riegert and Joanna Gleason in a two-character comedy by Monte Merrick. (Westside Arts, 407 W. 43rd St. 541-8394. Tuesdays through Fridays at 8; Saturdays at 7 and 10; and Sundays at 7. Matinees Sundays at 3.)

**HEY, MA...KAYE BALLARD**—A musical starring and written by Kaye Ballard. Original music and lyrics by David Levy and Leslie Eberhard, plus standards by George Gershwin, Cole Porter, and others. (Promenade, Broadway at 76th St. 580-1313. Tuesdays through Saturdays at 8, and Sundays at 7. Matinees Saturdays at 2:30 and Sundays at 3.)

**THE HUMAN COMEDY**—A musical adaptation of William Saroyan's novel of the same name, with music by Galt MacDermot, libretto by William Dumas, and direction by Wilford Leach. Previews Wednesday, April 4. Opens officially on Thursday, April 5. (Royale, 242 W. 45th St. 239-6200. Tuesdays through Saturdays at 8; opening-night curtain at 6:45. Matinees Wednesdays and Saturdays at 2, and Sundays at 3.)

**ISN'T IT ROMANTIC**—A spirited revival of Wendy Wasserstein's sometimes painful but always witty comedy about a pair of female "best friends" at age twenty-eight, and especially about the trials of one of them, Janie Blumberg. The script has been somewhat revised, and the production, under Gerald Gutierrez's direction, is much fuller than it was original-

## TABLE OF CONTENTS

THE TALK OF THE TOWN	35
"FINNEGAN WAKES AT YANKEE STAGEUM"	Kenneth Lash 41
"BUDDY"	Laura Furman 42
"FAR WEST ONCE" (POEM)	Robert Penn Warren 44
"AT NORTH FARM" (POEM)	John Ashbery 48
PROFILES (GOVERNOR MARIO CUOMO—PART I)	Ken Auletta 50
MUSICAL EVENTS	Andrew Porter 114
THE THEATRE	Brendan Gill 121
AROUND CITY HALL	Andy Logan 122
DANCING	Arlene Croce 133
BOOKS	Tony Gibbs 138
BRIEFLY NOTED	143

COVER: *Eugène Ionesco*

DRAWINGS: *Dana Fradon, Lee Lorenz, Robert Weber, Charles Addams, William Steig, Edward Koren, Roz Chast, Henry Martin, James Stevenson, Burt Silverman, Bernard Schoenbaum, Robert Mankoff, Frank Modell, Gahan Wilson, Stuart Leeds, Mischa Richter, Mick Stevens, Al Ross, Warren Miller*

## THE NEW YORKER

25 WEST 43RD STREET, NEW YORK, N.Y. 10036

(212) 840-3800

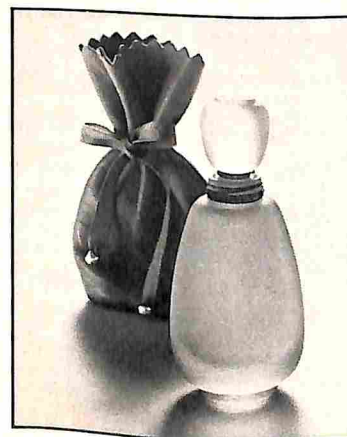
### CHANGE OF ADDRESS

In ordering a change of address, subscribers should give four weeks' notice, providing both old and new addresses, with Zip Codes. If possible, please send the address label from a recent issue.

THE NEW YORKER (ISSN 0028-792X), published weekly by The New Yorker Magazine, Inc., 25 W. 43rd St., N.Y., N.Y. 10036; Peter F. Fleischmann, chairman; J. Kennard Bosc, president; Milton Greenstein, Sam R. Spoto, Robert F. Young, vice-presidents; Elaine M. Matteo, treasurer & secretary; Stuart H. Jason, comptroller. Branch advertising offices: 111 East Wacker Drive, Chicago, Ill. 60601; 155 Montgomery St., San Francisco, Calif. 94104; Suite 2360, 5900 Wilshire Blvd., Los Angeles, Calif. 90036; 1175 Peachtree St. N.E., Atlanta, Ga. 30361; 67½ Chestnut St., Boston, Mass. 02108; 21 Grosvenor St., London, W1X 0ED. Vol. LX, No. 8, April 9, 1984. Second-class postage paid at New York, N.Y., and at additional mailing offices. Authorized as second-class mail by the Post Office Department, Ottawa, Canada, and for payment of postage in cash. © 1984 by The New Yorker Magazine, Inc., in the United States and Canada. All rights reserved. No part of this periodical may be reproduced without the consent of The New Yorker. Printed in U.S.A. Subscription rates: In U.S. and possessions, one year, \$32.00; two years, \$52.00. In Canada, one year, \$44.00. Other foreign, \$52.00. POSTMASTER: Send address changes to The New Yorker, 25 W. 43rd St., New York, N.Y. 10036.



© 1984 Estée Lauder, Inc. Photograph: Skrebneski Gown: Rizkallah Earrings: Stigi



All you need is one beautiful drop  
to know why Estée Lauder was keeping  
**Private Collection**  
fragrance for herself.

ESTÉE LAUDER



April 9, 1984

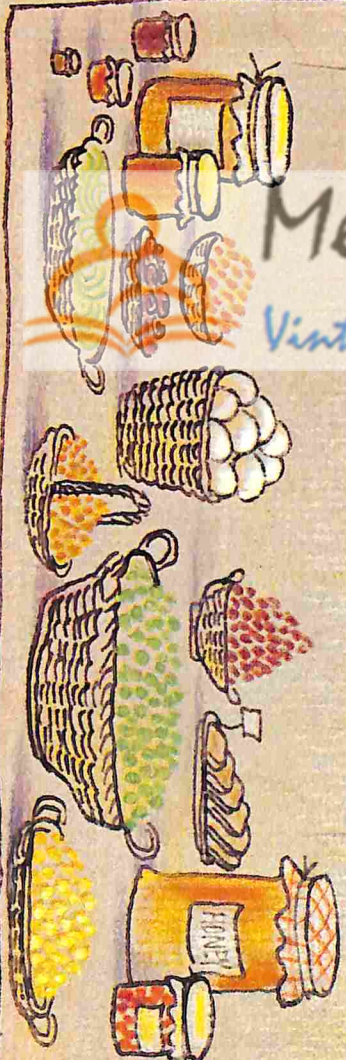
THE

Price \$1.50

# NEW YORKER

MereMart.com®

Vintage Magazines for Special People



*Empire Business Co.*