

# GOINGS ON ABOUT TOWN

A CONSCIENTIOUS CALENDAR OF EVENTS OF INTEREST

## THE THEATRE

### PLAYS AND MUSICALS

**ANOTHER ANTI-GONE**—A. R. Gurney, Jr.'s witty, humorous play about a professor of Greek drama who is accused of anti-Semitism. George Grizzard gives a marvellous, eloquent performance. (Reviewed in this issue.) (Playwrights Horizons, 416 W. 42nd St. 279-4200. Tuesdays through Saturdays at 8, and Sundays at 7. Matinées Saturdays and Sundays at 3.)

**ANYTHING GOES**—Under the clever direction of Jerry Zaks, this exuberant revival is primarily a celebration of Cole Porter himself. The libretto, as revised from the original by Timothy Crouse and John Weidman, is consistently entertaining. The company, which includes Bill McCutcheon, Howard McGillin, Patti LuPone, Anthony Heald, and Kathleen Mahony-Bennett, does more than justice to the words and score. (Reviewed in our issue of 11/2/87.) (Vivian Beaumont, Lincoln Center. 239-6200. Tuesdays through Saturdays at 8. Matinées Wednesdays and Saturdays at 2, and Sundays at 3.)

**THE BOYS NEXT DOOR**—A play by Tom Griffin. (Lambs, 130 W. 44th St. 997-1780. Mondays and Wednesdays through Saturdays at 8. Matinées Wednesdays and Saturdays at 2, and Sundays at 3.)

**BREAKING THE CODE**—Derek Jacobi gives an accomplished performance as the English mathematician Alan Turing, who helped crack the German Enigma code during the war, but Hugh Whitmore's script is more vehicle than play. Michael Gough, Rachel Gurney, and Jenny Agutter are among the good supporting actors. Clifford Williams was the director. (11/30/87) (Neil Simon, 250 W. 52nd St. 246-0102. Tuesdays through Saturdays at 8. Matinées Wednesdays and Saturdays at 2, and Sundays at 3.)

**BURN THIS**—Lanford Wilson's play can be considered an occasion for an astonishing performance by John Malkovich, as a foulmouthed restaurant manager who woos and wins his dead brother's dancing partner. The supporting actors—Joan Allen, Jonathan Hogan, and Lou Liberatore—are also good. Marshall W. Mason was the director, and the distinguished setting was designed by John Lee Beatty and lighted by Dennis Parichy. (10/26/87) (Plymouth, 236 W. 45th St. 239-6200. Nightly, except Sundays, at 8. Matinées Wednesdays and Saturdays at 2.)

**CABARET**—This tasteful revival of the 1966 musical by John Kander and Fred Ebb (directed by Harold Prince) has a gloriously muted Joel Grey re-creating his role as the Emcee and a sterling performance by Alyson Reed, who plays Sally Bowles as she was always meant to be played. (11/2/87) (Imperial, 249 W. 45th St. 239-6200. Tuesdays through Saturdays at 8. Matinées Wednesdays and Saturdays at 2, and Sundays at 3.)

**THE CHERRY ORCHARD**—Chekhov's comedy, in a new English translation by Elisaveta Lavrova. Natasha Parry, Rebecca Miller, Željko Ivanek, Erland Josephson, Brian Dennehy, and Linda Hunt head a cast directed by Peter Brook. (Majestic, 651 Fulton St., about a block east of Flatbush Ave., Brooklyn. 1-718 636-4100. Previews Monday and Tuesday, Jan. 18-19, at 7; Wednesday through Friday, Jan. 20-22, at 8; and Saturday, Jan. 23, at 3. Opens officially on Saturday, Jan. 23, at 8. Thereafter, Tuesdays through Saturdays at 8. Matinées Saturdays at 3.)

**EQUITY LIBRARY THEATRE**—A revival of the 1977 musical revue *Side by Side* by Sondheim is the fourth in this season's series of eight productions. (Equity Library Theatre, 103rd St. and Riverside Dr. Nightly, except Mondays,

S • M • T • W • T • F • S						
	18	19	20	21	22	23
24	25	26	27			

at 8. Matinées Saturdays and Sundays at 2:30. Closes Sunday, Jan. 31. For information about tickets, for which contributions are requested, call 663-2028.)

**FLORA, THE RED MENACE**—John Kander and Fred Ebb have written additional songs for this revised version of their 1965 musical; the completely new book, based on Lester Atwell's novel "Love Is Just Around the Corner," is by David Thompson. (Vineyard Theatre, 309 E. 26th St. 683-0696. Nightly at 8. Matinée Saturday at 3. Closes Saturday, Jan. 23.)

**FRANKIE AND JOHNNY IN THE CLAIR DE LUNE**—Terrence McNally's enchanting comedy about sex and the sudden onset of love in an apartment on Tenth Avenue in the Fifties. Kathy Bates and Kenneth Welsh give remarkable performances, under the direction of Paul Benedict. (11/9/87) (Westside Arts, 407 W. 43rd St. 541-8394. Tuesdays through Fridays at 8; Saturdays at 7 and 10; and Sundays at 7. Matinées Sundays at 3.)

**INTO THE WOODS**—The new musical by Stephen Sondheim and James Lapine is an attempt to show what lurks beneath the surface of con-

ventional fairy tales. The amusing first half is like a musical staging of Bruno Bettelheim's "The Uses of Enchantment." The rather nasty second half degenerates into cheap philosophy. The costumes (by Ann Hould-Ward) and sets (by Tony Straiges) are pretty to look at, and the songs are beautiful or funny—sometimes both. The superb cast, led by Bernadette Peters and Joanna Gleason, is directed by Mr. Lapine. (11/16/87) (Martin Beck, 302 W. 45th St. 246-6363. Tuesdays through Saturdays at 8. Matinées Wednesdays and Saturdays at 2, and Sundays at 3.)

**MAN AND SUPERMAN**—In this latest revival of Shaw's 1903 anti-romantic comedy, David Birney is miscast as the glib radical-intellectual Jack Tanner, and Frances Conroy is misdirected (by William Woodman) as his unwanted ward, Ann Whitefield. But the production—which does not include Act III and the brilliant dream sequence commonly known as "Don Juan in Hell"—is saved by the deftly winning performances of Michael Cumpsty, Anthony Fusco, and Kim Hunter (as Mrs. Whitefield, Ann's mother). (Reviewed in this issue.) (Roundabout, 100 E. 17th St. 420-1883. Tuesdays through Saturdays at 8. Matinées Wednesdays, Saturdays, and Sundays at 2.)

**A MIDSUMMER NIGHT'S DREAM**—This is as much a celebration of Shakespeare's comedy as a presentation of it, with the inventive A. J. Antoon at the helm. F. Murray Abraham is Bottom, Elizabeth McGovern is Helena, and

## TABLE OF CONTENTS

THE TALK OF THE TOWN	25
"A LOT IN COMMON"	Veronica Geng 30
"THE CONCERT PARTY"	Mavis Gallant 32
"TWO POEMS"	Jean Valentine 34
A REPORTER AT LARGE (THE HOMELESS—PART I)	Jonathan Kozol 65
THE THEATRE	Edith Oliver, Mimi Kramer 85
ONWARD AND UPWARD WITH THE ARTS (BOGGS—PART II)	Lawrence Weschler 88
THE CURRENT CINEMA	Pauline Kaal 99
AROUND CITY HALL	Andy Logan 101
BOOKS	Whitney Balliett 109
BRIEFLY NOTED	110

COVER: Eugène Mihaesco

DRAWINGS: Mort Gerberg, Jack Ziegler, Joseph Farris, Henry Martin, Roz Chast, Edward Koren, James Stevenson, Charles Addams, Bernard Schoenbaum, George Price, Mischa Richter, Everett Opte, Edward Frascino, Robert Mankoff, Thomas B. Allen, Charles Barsotti, Richard Cline, Robert Weber, Warren Miller, Arnie Levin

## THE NEW YORKER

25 WEST 43RD STREET, NEW YORK, N.Y. 10036  
(212) 840-3800

## SUBSCRIPTION SERVICE

To inquire about a subscription or to change an address, please write to The New Yorker, Box 56447, Boulder, Colorado 80322, or telephone 1-800 525-0643 (in Colorado 303 447-9330). For a change of address, subscribers should give four weeks' notice. If possible, please send the address label from a recent issue.

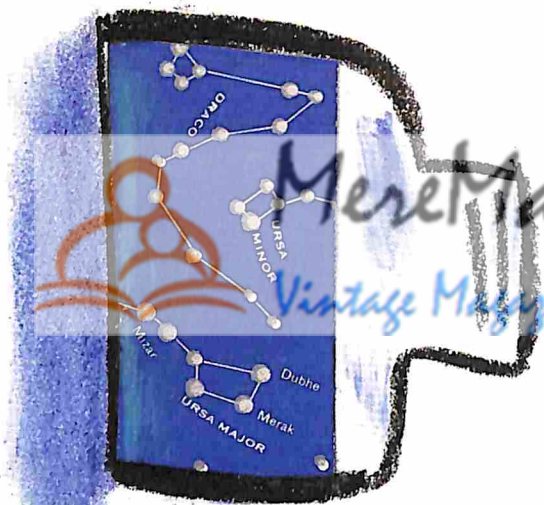
THE NEW YORKER (ISSN 0028-792X), published weekly by The New Yorker Magazine, Inc., 25 W. 43rd St., N.Y., N.Y. 10036; Steven T. Florio, president and chief executive officer; Jonathan E. Newhouse, executive vice-president; Rebecca Wesson Darwin, vice-president and publisher; Sam R. Spoto, vice-president; Stuart H. Jason, vice-president and treasurer; Ruth A. Diem, vice-president and human-resources director; Lynn W. Guthrie, advertising director; Frank Mustacato, circulation director. Branch advertising offices: 111 East Wacker Drive, Chicago, Ill. 60601; 41 Osgood Place, San Francisco, Calif. 94133; Suite 2360, 5900 Wilshire Blvd., Los Angeles, Calif. 90036; 67½ Chestnut St., Boston, Mass. 02108; 19 South Audley St., London, W1Y 5DN. Metropolitan Publishers Representatives: 3017 Piedmont Road, NE, Atlanta, Ga. 30305; 2500 So. Dixie Highway, Miami, Fla. 33133; 3016 Mason Place, Tampa, Fla. 33629; 3 Church St., Suite 503, Toronto, Canada. M5E 1M2. Vol. LXIII, No. 49, January 25, 1988. Second-class postage paid at New York, N.Y., and at additional mailing offices. Authorized as second-class mail by the Post Office Department, Ottawa, Canada, and for payment of postage in cash. © 1988 by The New Yorker Magazine, Inc., in the United States and Canada. All rights reserved. No part of this periodical may be reproduced without the consent of The New Yorker. Printed in U.S.A. Subscription rates: In U.S. and possessions, one year, \$32.00; two years, \$52.00. In Canada, one year, \$50.00. Other foreign, one year, \$56.00, payable in advance. POSTMASTER: Send address changes to The New Yorker, Box 56447, Boulder, Colorado 80322.

Jan. 25, 1988

THE

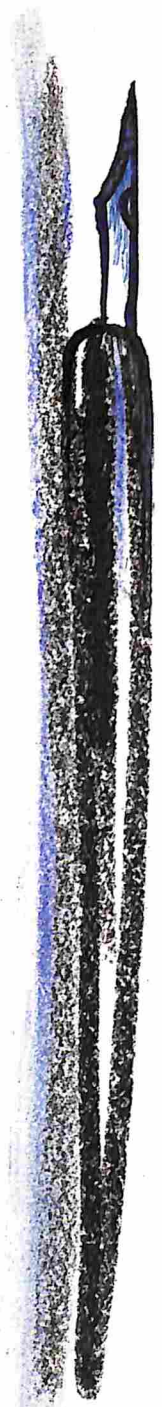
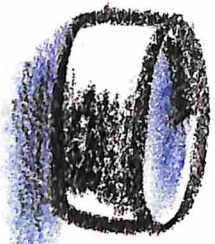
Price \$1.75

# NEW YORKER



MeretArt.com<sup>®</sup>

Vintage Magazines for Special People



*Ernyine Phillips Co.*