

# GOINGS ON ABOUT TOWN

A CONSCIENTIOUS CALENDAR OF EVENTS OF INTEREST

## THE THEATRE PLAYS AND MUSICALS

**AH, WILDERNESS!**—O'Neill's domestic comedy of innocence at the turn of the century is so charming, so funny, and so firmly crafted that all it needs is a passable performance. Several members of the company assembled by the Roundabout for its pleasant production are considerably better than passable, notably Philip Bosco as the father of the family that the play is about; Scott Burkholder as his moonstruck, bookish middle son; Robert Nichols as his bibulous brother-in-law; and Laurinda Barrett as his spinster sister. (Haft, 227 W. 27th St. 242-7800. Tuesdays through Saturdays at 8. Matinees Wednesdays, Saturdays, and Sundays at 2.)

**BECKETT PLAYS**—Three brief plays by Samuel Beckett. The haunting "Catastrophe," in which David Warilow gives a silent, eloquent performance, first appeared in this magazine. Alan Schneider was the impeccable director. (Reviewed in our issue of 6/27/83.) (Harold Clurman, 412 W. 42nd St. 594-2370. Tuesdays through Saturdays at 8, and Sundays at 7. Matinees Saturdays at 2:30 and Sundays at 3.)

**BREAKFAST WITH LES AND BESS**—Holland Taylor and Keith Charles in a comedy by Lee Kalcheim. (Lambs Theatre, 130 W. 44th St. 997-1780. Tuesdays through Saturdays at 8. Matinees Wednesdays and Saturdays at 2, and Sundays at 3.)

**BRIGHTON BEACH MEMOIRS**—A remembrance of things past by Neil Simon. The hero is a sex-obsessed fifteen-year-old, wonderfully well played by Matthew Broderick. (4/11/83) (Neil Simon Theatre, formerly the Alvin, 250 W. 52nd St. 757-8646. Nightly, except Sundays, at 8. Matinees Wednesdays and Saturdays at 2.)

**THE CAINE MUTINY COURT-MARTIAL**—John Rubinstein, Michael Moriarty, and half a dozen other first-rate actors in a rousing revival of the Herman Wouk melodrama. (5/16/83) (Circle in the Square, 50th St. west of Broadway. 581-0720. Tuesdays through Saturdays at 8. Matinees Wednesdays and Saturdays at 2, and Sundays at 3.)

**CATS**—Ezra Pound nicknamed T. S. Eliot "Old Possum," and under that name Eliot wrote a collection of poems about cats, and now the cats are on display on Broadway, with music by Andrew Lloyd Webber, scenery by John Napier, and direction by Trevor Nunn. (10/18/82) (Winter Garden, Broadway at 50th St. 239-6222. Nightly, except Sundays, at 8. Matinees Wednesdays and Saturdays at 2.)

**EXTREMITIES**—Farrah Fawcett in a play by William Mastrosimone. (Westside Arts, 407 W. 43rd St. 541-8394. Tuesdays through Fridays at 8, and Saturdays at 7 and 10. Matinees Wednesdays at 2:30 and Sundays at 3.)

**FOOL FOR LOVE**—Sam Shepard's play is as near a miracle as makes no matter—mysterious, funny, and beautiful. It is about two battling, loving lovers in a motel room at the edge of the Mojave Desert and about many other matters as well. Will Patton and Kathy Whitton Baker have the leading roles. Mr. Shepard directed. (6/6/83) (Circle Repertory Company Theatre, 99 Seventh Ave. S., at Sheridan Sq. 924-7100. Tuesdays through Fridays at 8; Saturdays at 7 and 10; and Sundays at 7. Matinees Sundays at 3. Closes Sunday, July 31.)

**FUNHOUSE**—Eric Bogosian in a one-man show. (Public, 425 Lafayette St. 598-7150. Thursdays through Sundays at 8. Closes Saturday, July 16.)

**GREATER TUNA**—Ronn Carroll and Michael Jeter portray twenty citizens (m. and f.) of the third-smallest town in Texas, in a play that is as broad as a cartoon but is also sharp and satiric and frequently funny. It was written

S	M	T	W	T	F	S
10	11	12	13	14	15	16

by Jaston Williams, Joe Sears, and the director, Ed Howard. (11/1/82) (Circle in the Square Downtown, 159 Bleecker St. 254-6330. Tuesdays through Fridays at 8; Saturdays at 7 and 10; and Sundays at 7. Matinees Sundays at 3.)

**LIGHT OPERA OF MANHATTAN**—Through Sunday, July 17: Gilbert and Sullivan's *H.M.S. PINAFORE*. (Eastside, 334 E. 74th St. 861-2288. Wednesdays through Saturdays at 8:30. Matinees Wednesdays at 2, and Saturdays and Sundays at 4.)

**MERLIN**—An unlucky mingling of musical comedy and magic. Doug Henning can make horses vanish into thin air, but he can't transform himself into a romantic troubadour. (2/28/83) (Mark Hellinger, 237 W. 51st St. 757-7064. Tuesdays through Saturdays at 8. Matinees Wednesdays, Saturdays, and Sundays at 2.)

**MY ONE AND ONLY**—A joyous keepsake of Gershwin songs, neatly tucked into a new book by Peter Stone and Timothy S. Mayer. Twiggy and Tommy Tune head the marvellous cast. (5/9/83) (St. James, 246 W. 44th St. 398-0280. Tuesdays through Saturdays at 8. Matinees Wednesdays and Saturdays at 2, and Sundays at 3.)

**NIGHT, MOTHER**—Marsha Norman's play about

a young woman bent upon committing suicide is an altogether successful work of art and much less dispiriting than one might suppose. With Kathy Bates and Anne Pitoniak, who have been ably directed by Tom Moore. (4/11/83) (Golden, 252 W. 45th St. 239-6200. Nightly, except Sundays, at 8. Matinees Wednesdays and Saturdays at 2.)

**ON YOUR TOES**—Not the least taint of patronizing mars this revival of the Rodgers and Hart classic musical of 1936. The director, George Abbott, helped to write the original book and, at ninety-five, evidently has a tenacious recollection of how things were and how they ought to be. (3/14/83) (Virginia, 245 W. 52nd St. 977-9370. Tuesdays through Saturdays at 8. Matinees Wednesdays and Saturdays at 2, and Sundays at 3.)

**PASSION**—Peter Nichols' new play begins as a comedy and ends at a point just short of tragedy. Frank Langella and Roxanne Hart are the outstanding members of a fine cast. (5/23/83) (Longacre, 220 W. 48th St. 239-6200. Tuesdays through Saturdays at 8. Matinees Wednesdays and Saturdays at 2, and Sundays at 3.)

**PRIVATE LIVES**—Elizabeth Taylor and Richard Burton put themselves on display in Coward's comedy where they do not belong. John Cullum and Kathryn Walker are also in the cast. (5/16/83) (Lunt-Fontanne, 205 W. 46th St. 575-9200. Tuesdays through Saturdays at 8. Matinees Wednesdays and Saturdays at 2, and Sundays at 3. Closes Sunday, July 17.)

**QUARTERMAINE'S TERMS**—The title character of Simon Gray's funny, sad comedy is a teacher whom loneliness has made even more bubble-brained than God did. Lee Richardson plays

## TABLE OF CONTENTS

THE TALK OF THE TOWN	31
"THE CURRENT CRISIS IN REMORSE"	Garrison Keillor 36
"OUT HERE"	David Ledvitt 38
"THE SWIMMING POOL" (POEM)	Howard Moss 40
"BEE BALM" (POEM)	Gerald Stern 44
OUR FAR-FLUNG CORRESPONDENTS (AHOSKIE, NORTH CAROLINA)	Andrea Lee 47
A REPORTER AT LARGE (ALONG THE IRON CURTAIN—PART III)	Anthony Bailey 60
MUSICAL EVENTS	Andrew Porter 88
THE CURRENT CINEMA	Pauline Kael 90
BOOKS	John Updike 96

COVER: Charles E. Martin

DRAWINGS: Henry Martin, Warren Miller, Al Ross, J. B. Handelsman, Edward Frascino, Joseph Mirachi, Frank Modell, Robert Weber, Eldon Dedini, Michael Maslin, James Stevenson, Donald Reilly, Edward Koren, Mike Twohy, Robert Mankoff, Tom Funk, Dana Fradon, Roz Chast, Charles Barsotti, Arnie Levin

## THE NEW YORKER

25 WEST 43RD STREET, NEW YORK, N.Y. 10036

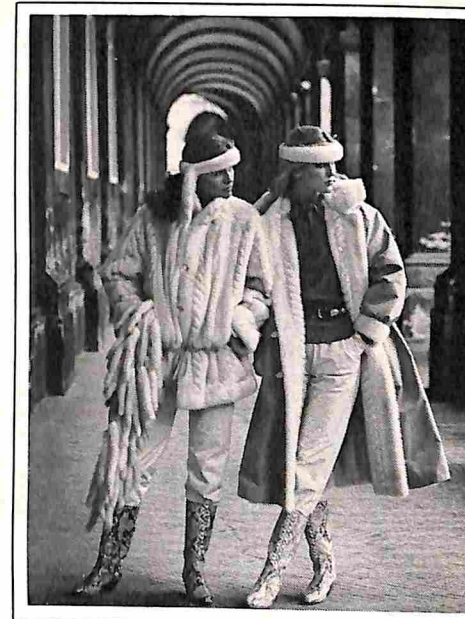
(212) 840-3800

## CHANGE OF ADDRESS

In ordering a change of address, subscribers should give four weeks' notice, providing both old and new addresses, with Zip Codes. If possible, please send the address label from a recent issue.

THE NEW YORKER (ISSN 0028-792X), published weekly by The New Yorker Magazine, Inc., 25 W. 43rd St., N.Y., N.Y. 10036; Peter F. Fleischmann, chairman. George J. Green, president; J. Kennard Bose, vice-president & treasurer; Milton Greenstein, Sam R. Spoto, vice-presidents; Elaine M. Matteo, secretary; Robert F. Young, advertising director. Branch advertising offices: 111 East Wacker Drive, Chicago, Ill. 60601; 155 Montgomery St., San Francisco, Calif. 94104; Suite 2360, 5900 Wilshire Blvd., Los Angeles, Calif. 90036; 1175 Peachtree St. N.E., Atlanta, Ga. 30361; 67½ Chestnut St., Boston, Mass. 02108; 21 Grosvenor St., London, W1X 0ED. Vol. LIX, No. 21, July 11, 1983. Second-class postage paid at New York, N.Y., and at additional mailing offices. Authorized as second-class mail by the Post Office Department, Ottawa, Canada, and for payment of postage in cash. © 1983 by The New Yorker Magazine, Inc., in the United States and Canada. All rights reserved. No part of this periodical may be reproduced without the consent of The New Yorker. Printed in U.S.A. Subscription rates: In U.S. and possessions, one year, \$32.00; two years, \$52.00. In Canada, one year, \$44.00. Other foreign, \$52.00. POSTMASTER: Send address changes to The New Yorker, 25 W. 43rd St., New York, N.Y. 10036.

# BIRGER CHRISTENSEN



**ANNOUNCING THE NEW SHORT ROUTE TO COPENHAGEN: LONDON**  
There are those who find the lure of the legendary Birger Christensen of Copenhagen sufficient to warrant a trip to Denmark. We understand. So we're offering a shortcut. Our new shop in London. You'll find the same stunning furs in the same charming surroundings as in Copenhagen. Except they're closer.



By Appointment to the  
Royal Danish Court

**NOW IN LONDON**  
170 NEW BOND STREET LONDON W1. 01-629-2211



July 11, 1983

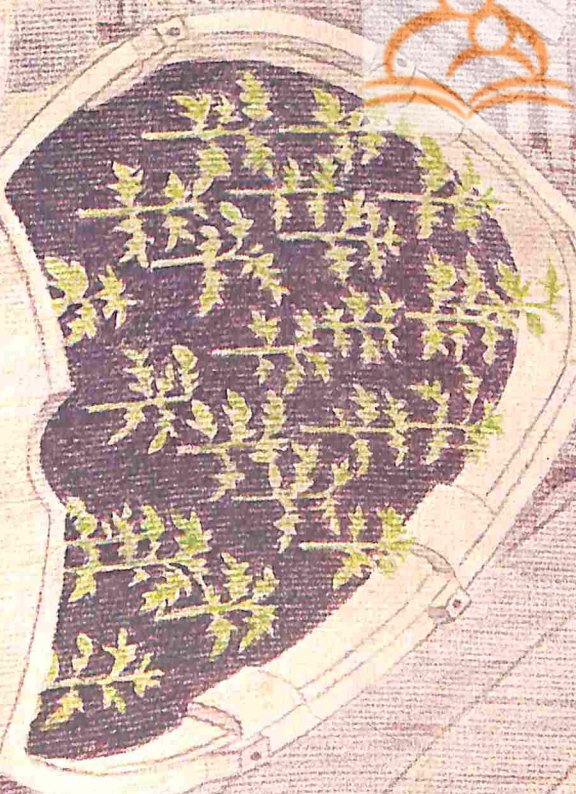
THE

Price \$1.50

# NEW YORKER

MereMart.com®

*Vintage Magazines for Special People*



NESSICA  
HART CRYE

CEM