

GOINGS ON ABOUT TOWN

A CONSCIENTIOUS CALENDAR OF EVENTS OF INTEREST

THE THEATRE

PLAYS AND MUSICALS

A...MY NAME IS ALICE—A musical revue conceived and directed by Joan Micklin Silver and Julianne Boyd. (Top of the Gate, 160 Bleecker St. 982-9292. Tuesdays through Fridays at 8; Saturdays at 7 and 10; and Sundays at 7. Matinees Sundays at 3.)

BABY—A musical that is just the ticket for gynecologists and obstetricians, but of less interest to ordinary theatergoers. The cast is numerous and oddly enthusiastic. (Reviewed in our issue of 12/12/83.) (Ethel Barrymore, 243 W. 47th St. 239-6200. Tuesdays through Saturdays at 8. Matinees Wednesdays and Saturdays at 2, and Sundays at 3.)

LA CAGE AUX FOLLES—A big, handsomely designed and handsomely costumed musical, starring George Hearn and Gene Barry. The book, by Harvey Fierstein, is sentimental nonsense, but the music, by Jerry Herman, is pleasantly tuneful. Everybody else in New York intends to see the show, so why not you? (9/5/83) (Palace, Broadway at 47th St. 757-2626. Nightly, except Sundays, at 8. Matinees Wednesdays and Saturdays at 2.)

DEATH OF A SALESMAN—Dustin Hoffman gives a performance as Willy Loman every bit as impressive as the one that Lee J. Cobb gave back in 1949. The Arthur Miller play continues to possess an uncanny power to move us to tears. (4/9/84) (Broadhurst, 235 W. 44th St. 239-6200. Tuesdays through Saturdays at 8. Matinees Wednesdays at 2 and Sundays at 3.)

EMPRESS OF CHINA—A play by Ruth Wolff, with Tina Chen and Ernest Abuba. Tisa Chang is the director. (Pan Asian Repertory Theatre, 120 W. 28th St. 255-7293. Wednesdays through Saturdays at 8, and Sundays at 7. Matinees Saturdays at 2 and Sundays at 3. Closes Sunday, June 3.)

END OF THE WORLD—Arthur Kopit's often funny, often frightening view of where we stand at this moment in respect to the nuclear arms race. With John Shea, Barnard Hughes, and Linda Hunt. (5/14/84) (Music Box, 239 W. 45th St. 239-6200. Nightly, except Sundays, at 8. Matinees Wednesdays and Saturdays at 2.)

ENSEMBLE STUDIO THEATRE—A festival of one-act plays. "Jazz," by Elizabeth Albrecht; "Been Taken," by Roger Hedden; "A Sense of Loss," by Mark Malone; and "Vermont Sketches," by David Mamet. Thursday and Friday evenings, May 24-25; Sunday matinee and evening, May 27; Wednesday and Thursday evenings, May 30-31; and Saturday evening, June 2. "Saxophone Music," by Bill Bozzone; "I Have a Dream," an adaptation of the Reverend Dr. Martin Luther King, Jr.'s speech; "Ariel Bright," by Katharine Long; and "Raving," by Paul Rudnick. Saturday matinee and evening, May 26; Monday and Tuesday evenings, May 28-29; Friday evening, June 1; and Saturday matinee, June 2. (Ensemble Studio Theatre, 549 W. 52nd St. 247-4982. Evenings at 7:30. Matinees at 2. Closes Monday, June 18.)

EQUITY LIBRARY THEATRE—The final production of the season is a revival of the Rodgers and Hart musical **PAL JOEY**, for which John O'Hara wrote the book. (Equity Library Theatre, 103rd St. and Riverside Dr. Nightly, except Mondays, at 8. Matinees Saturdays and Sundays at 2:30. Closes Sunday, June 3. For information about tickets, for which contributions are requested, call 663-2028.)

GLENGARRY GLEN ROSS—A play by David Mamet that says, in effect, that real-estate salesmen are rascals and so perhaps are all the other entrepreneurs in our contemporary society. Funny and harsh in the writing and acted to perfection. Winner of the Pulitzer Prize and the Drama Critics Circle award for the best

S	M	T	W	T	F	S
			23	24	25	26
27	28	29	30	31	1	2

American play of the year. (4/2/84) (Golden, 252 W. 45th St. 239-6200. Nightly, except Sundays, at 8. Matinees Wednesdays and Saturdays at 2.)

ISN'T IT ROMANTIC—A spirited revival of Wendy Wasserstein's sometimes painful but always witty comedy about a pair of female "best friends" at age twenty-eight, and especially about the trials of one of them, Janie Blumberg. The script has been somewhat revised and the production, under Gerald Gutierrez's direction, is much fuller than it was originally. With Barbara Barrie, Lisa Banes, Peg Murray, Jerry Lanning, Tom Robbins, Cristine Rose, and Steven Gilborn. (12/26/83) (Playwrights Horizons, 416 W. 42nd St. 279-4200. Tuesdays through Fridays at 8; Saturdays at 7 and 10; and Sundays at 7. Matinees Sundays at 3.)

LIGHT OPERA OF MANHATTAN—Through Sunday, June 3: Rudolf Friml's **THE VAGABOND KING**. (Eastside, 334 E. 74th St. 861-2288. Wednesdays through Saturdays at 8. Matinees Wednesdays at 2, and Saturdays and Sundays at 3:30.)

MIRROR THEATRE COMPANY—A season of revivals in alternating repertory: Susan Glaspell's

INHERITORS; Clifford Odets' **PARADISE LOST**, starring Geraldine Page; John Colton and Clemence Randolph's **RAIN**; Henrik Ibsen's **GHOSTS**, translated by Eva Le Gallienne and starring Geraldine Page; and John Patrick's **THE HASTY HEART**. (Theatre at St. Peter's Church, Lexington Ave. at 54th St. Mondays through Saturdays at 8, and Sundays at 7. Matinees Saturdays at 2 and Sundays at 3. For tickets and information about play scheduling, call 223-6440.)

MR. & MRS.—The remarkable Peter Friedman is Mr., and the delightful Polly Draper is Mrs. in Kevin Wade's light-fingered farce. David Trainer was the deft director. (WPA Theatre, 138 Fifth Ave., at 18th St. 691-2274. Wednesdays through Saturdays at 8, and Sundays at 7:30. Matinees Sundays at 3. Closes Sunday, June 10.)

A MOON FOR THE MISBEGOTTEN—O'Neill's idea of what might have taken place on a pig farm outside New London, Connecticut, in the nineteen-twenties, is a helter-skelter stage-Irish melodrama, redeemed in part by the acting of Kate Nelligan and Jerome Kilty. (5/14/84) (Cort, 138 W. 48th St. 239-6200. Nightly, except Sundays, at 8. Matinees Saturdays at 2.)

NITE CLUB CONFIDENTIAL—An amiable salute—tongue in, tongue out of cheek—to night clubs in the fifties, with new songs written for the occasion by Dennis Deal and Albert Evans, and old ones by, among others, Harold Arlen, Frank Loesser, and Johnny Mercer. The music sounds fine, and the company is

TABLE OF CONTENTS

THE TALK OF THE TOWN	33
"OSLO"	Moir Crone 38
"CONSTELLATIONS"	Douglas Florian 41
"THE HINGE"	Penelope Gilliatt 42
"MEMORIAL DAY" (POEM)	Ellen Bryant Voigt 44
PROFILES (IMMIGRATION LAWYERS)	Calvin Trillin 50
THE SPORTING SCENE (GOLF)	Herbert Warren Wind 72
THE CURRENT CINEMA	Pauline Kael 100
A POLITICAL JOURNAL	Elizabeth Drew 104
MUSICAL EVENTS	Andrew Porter 120
BOOKS	George Steiner 125

COVER: William Steig

DRAWINGS: J. B. Handelsman, Warren Miller, Dana Fradon, Charles Saxon, Mike Twohy, Edward Koren, Leo Cullum, Arnie Levin, Lee Lorenz, James Stevenson, Al Ross, William Hamilton, Stan Hunt, Tom Funk, Barney Tobey, James Mulligan, Donald Reilly, Robert Weber, Michael Maslin, Frank Modell, Charles Barsotti, Henry Martin, Dean Victor

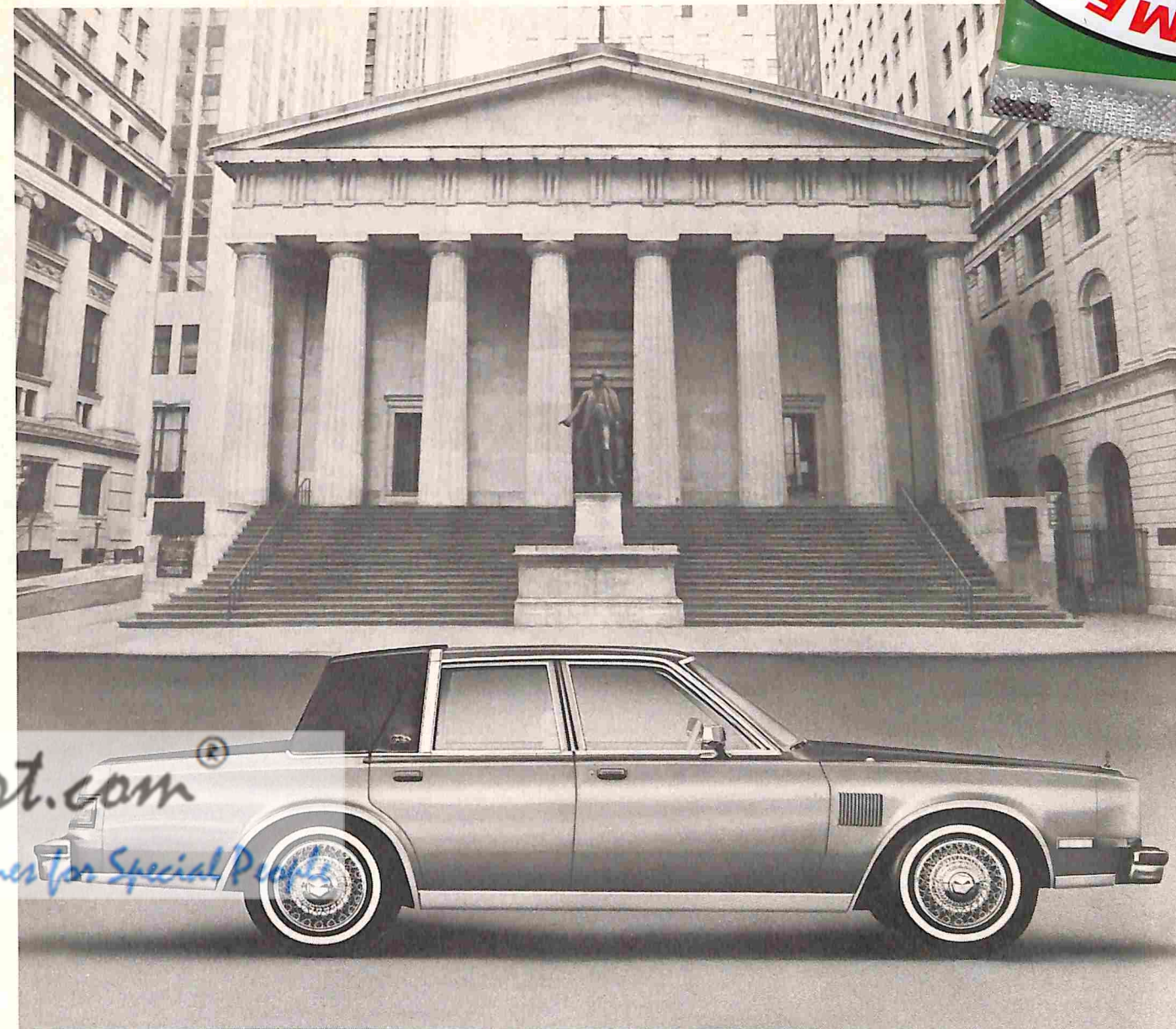
THE NEW YORKER

25 WEST 43RD STREET, NEW YORK, N.Y. 10036
(212) 840-3800

CHANGE OF ADDRESS

In ordering a change of address, subscribers should give four weeks' notice, providing both old and new addresses, with Zip Codes. If possible, please send the address label from a recent issue.

THE NEW YORKER (ISSN 0028-792X), published weekly by The New Yorker Magazine, Inc., 25 W. 43rd St., N.Y., N.Y. 10036; Peter F. Fleischmann, chairman; J. Kennard Bose, president; Milton Greenstein, Sam R. Spoto, Robert F. Young, vice-presidents; Elaine M. Matteo, treasurer & secretary; Stuart H. Jason, comptroller. Branch advertising offices: 111 East Wacker Drive, Chicago, Ill. 60601; 155 Montgomery St., San Francisco, Calif. 94104; Suite 2360, 5900 Wilshire Blvd., Los Angeles, Calif. 90036; 1175 Peachtree St. N. E., Atlanta, Ga. 30361; 67½ Chestnut St., Boston, Mass. 02108; 21 Grosvenor St., London, W1X 0ED. Vol. LX, No. 15, May 28, 1984. Second-class postage paid at New York, N.Y., and at additional mailing offices. Authorized as second-class mail by the Post Office Department, Ottawa, Canada, and for payment of postage in cash. © 1984 by The New Yorker Magazine, Inc., in the United States and Canada. All rights reserved. No part of this periodical may be reproduced without the consent of The New Yorker. Printed in U.S.A. Subscription rates: In U.S. and possessions, one year, \$32.00; two years, \$52.00. In Canada, one year, \$44.00. Other foreign, \$52.00. POSTMASTER: Send address changes to The New Yorker, 25 W. 43rd St., New York, N.Y. 10036.



WHERE WALL STREET AND FIFTH AVENUE MEET.

Chrysler Fifth Avenue gives a higher return on your investment than any Cadillac sedan.

The distinguished Chrysler Fifth Avenue is a unique luxury car. With 49 standard features and a valuable 5 year/50,000 mile Protection Plan, it just may be the best luxury car value in America. In fact, re-sale reports show that the 1982 and 1983 Fifth Avenue retain more of their original selling prices than similarly equipped Cadillac sedans.*

Luxuries abound: Standard 8-Cylinder Engine • Plush Pillow Seats with Passenger Recliner • Power Steering • Power Windows • Automatic Transmission • Air Conditioning • Power Front Disc Brakes • WSW Steel Belted Radials • Premium Wheel Covers • Electronic Digital Clock • Special Sound Insulation • Rear Window Defroster • Halogen Headlamps • Dual Remote Mirrors • Premium Plush Pile

Carpeting • Trunk Dress-Up • Trip Odometer • Warning/Interior Light Packages • Padded Landau Vinyl Roof • And 30 additional features.

5 Year/50,000 mile Protection Plan**

Your engine, transmission and drivetrain are protected for 5 years/50,000 miles, and the car's entire outer body is protected against rust-through for the same period.** Clearly, Fifth Avenue is an investment in luxury and quality. See your dealer for details. Buckle up for safety.

The best built, best backed American cars.†



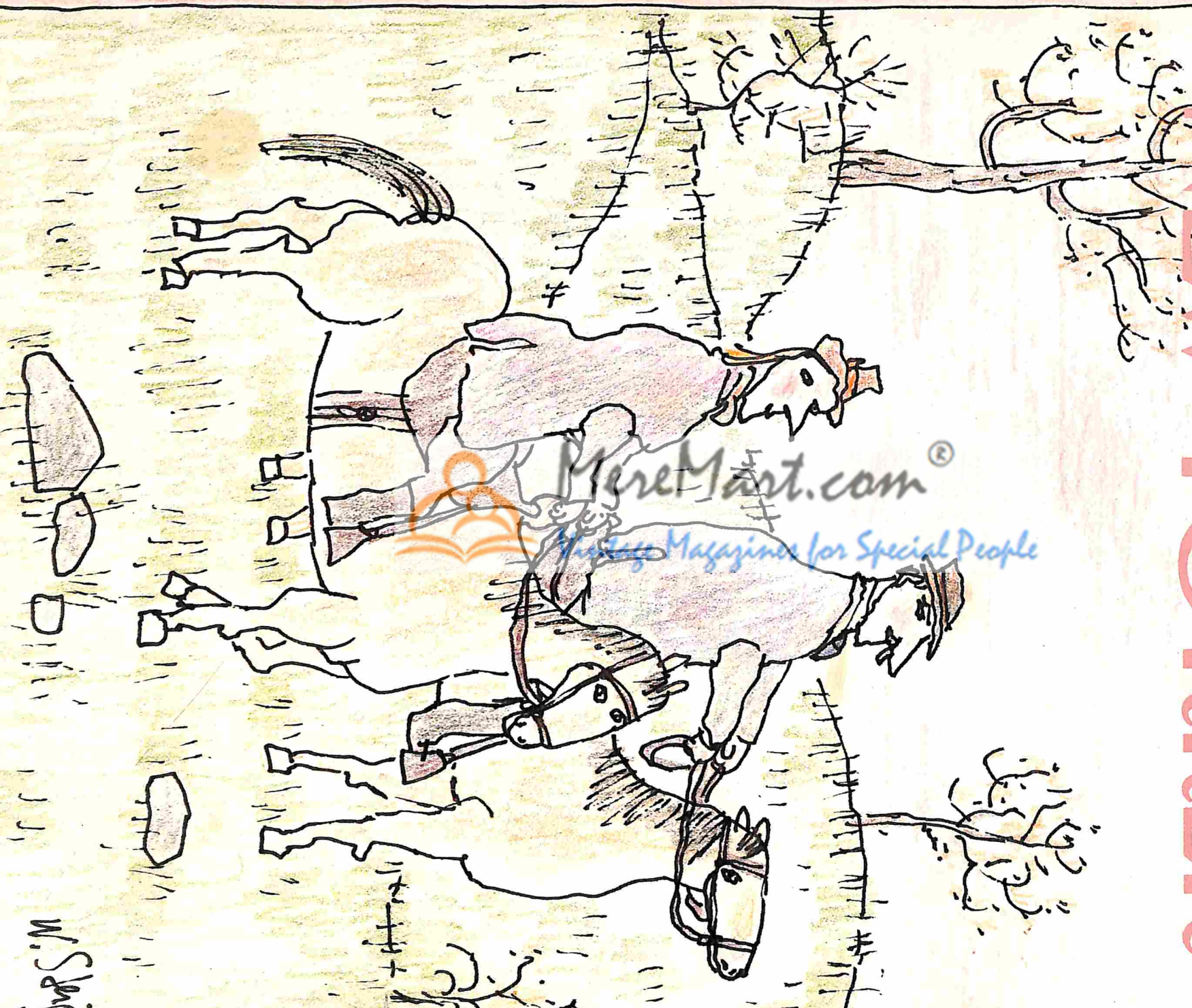
*Recent NADA Used Car Guides. **5 years or 50,000 miles, whichever comes first. Limited warranty. Deductible applies. Excludes leases. †Based on lowest percentage of National Highway Traffic Safety Administration safety recalls for '82 and '83 cars designed and built in North America, and a comparison of manufacturers' warranties for 1984 American models.

May 28, 1984

THE

Price \$1.50

NEW YORKER



MeretMast.com®

Magazines for Special People