

# IT TAKES TYPING FROM PAST TENSE TO FUTURE PERFECT.

Text (approx. 220 characters)  
Phrase memory (MII) lets you store up to 26 phrases of words under separate labels (A-Z). Touch a key and call any one into text.  
Full-line display with editing: catch mistakes before printing.  
Whisper-quiet thermal transfer printer. Works on plain paper.  
Compact, operates on batteries or AC adaptor.



## INTRODUCING SHARP'S ELECTRONIC PORTABLE: THE INTELLIWRITER.

Up to now the technology that went into typing came out of one place.

The past.

Enter the Sharp PA-1000 Intellwriter.™

The electronic printer that puts faster and easier typing at your fingertips.

With instant recall of up to 26 frequently used phrases or sentences. For everything from names and addresses to a full page of text. With a memory that stores up to 2200 characters; easily expandable to 8700.

Then just touch a key and the Intellwriter quietly prints out what you put in.

Sharp's Intellwriter has one of the largest liquid crystal displays too. It shows a full line. So you can see, edit, or correct what you've been thinking even before you print.

And as long as we've mentioned thinking, the

Intellwriter actually interfaces with many of today's modern computers.\*

Its portability carries a little weight too.

Under 8½ lbs. So it's easy to carry.

Not only that—it runs on batteries or plugs into a wall.

There are even more features

to the Intellwriter. But why not come into a Sharp dealer and see for yourself? You'll find the Sharp Intellwriter affordable. You'll find its performance amazing.

And you'll also find something else.

The future of typing.



\*Via RS232C optional interface. Pending FCC Approval. Available June 1984.  
Sharp Electronics Corp., Consumer Calculator Division, 10 Sharp Plaza, Paramus, NJ 07652

FEBRUARY 20, 1984 VOL. 21, NO. 7

# People

weekly

## ON THE COVER □ 54

Neither death nor thievery nor slander nor greed could stop the making of *Milk and Honey*, the last album of **John Lennon and Yoko Ono**

Cover photograph by Shinoyama  
Inset: Ken Regan/Camera 5

## MAIL □ 4

### PICKS & PANS □ 9

- ABC heads to the finish line of its Winter Olympics coverage, and **Dyan Cannon** grows older before your eyes in the CBS miniseries *Master of the Game*
- **Michael Caine** can't save the floundering sex farce *Blame It on Rio*
- **Abraham Lincoln's** face is surveyed in a collection of 19th-century images

### TAKE ONE □ 23

### STAR TRACKS □ 85

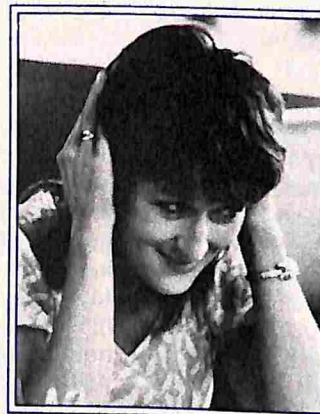
- **Diane Keaton** shops around
- **Greta Garbo** snaps back
- **Wayne Gretzky's** in the thick of things

### PEOPLE PUZZLE □ 98

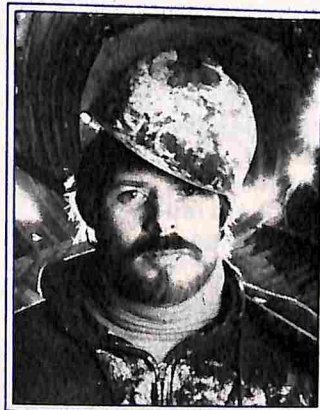
### CHATTER □ 110



Be my Valentine, 24



Silkwood: her legacy, 74



Tunnel vision, 86

## UP FRONT □ 24

- In an endearing heart-to-heart with **Cupid**, a columnist called "Mr. Romance," a/k/a **Langdon Hill**, probes love's mysteries
- At long last, love conquers *All My Children's* virtuous **Greg** and **Jenny** (Laurence Lau and Kim Delaney), who tie the knot on Valentine's Day
- **Chris Evert Lloyd** and hubby **John Lloyd** embark on a separation as retired rocker **Adam Faith** strikes her fancy
- In the Can't-Tell-the-Players-Without-a-Scorecard Department **Peter Jay** admits to being the possible father of nanny **Jane Tustian's** son four years after **Margaret Jay's** affair with **Carl Bernstein** gave **Nora Ephron** *Heartburn*. Meanwhile, a British M.P.'s ex-secretary gives birth to their love child

## TRIBUTE □ 37

Journalist **Tommy Thompson** plotted *Celebrity*, adapting his life story

## HOST □ 45

Party provisioners **Bruce** and **Jeff Ellis** have catered to the likes of **Nancy Reagan**, **Henry Kissinger**, **Jimmy Carter** and **Anwar Sadat**

## SCREEN □ 74

**Karen Silkwood's** lovers and family find the movie true-to-life, with reservations

## ON THE JOB □ 86

Hundreds of feet below the sidewalks of New York, sandhogs battle time—and death—to build a colossal new water tunnel

## ARTS □ 94

When they hand out the Grammy Awards this month, musicmaker **Wynton Marsalis** may make history

## TOP □ 101

As **Al Pacino's** sexy sis in *Scarface*, **Mary Elizabeth Mastrantonio** starts her movie career with a bang

## REALLY LOOKOUT! □ 107

Chain-saw juggler **Robert Gruenberg** is making a sharp entry into show buzz

## OLYMPICS □ 108

Former champion swimmer **Monique Berlioux** orchestrates this year's Games in Sarajevo and Los Angeles

PEOPLE WEEKLY (ISSN 0093-7673), published weekly, except two issues combined in one at year-end, \$45 per year U.S. and \$65 per year Canada only, by Time Inc., 3435 Wilshire Blvd., Los Angeles, Calif. 90010. Principal office: Rockefeller Center, New York, N.Y. 10020. J. Richard Munro, President; E. Thayer Bigelow, Treasurer; Charles B. Bear, Secretary. Second-class postage paid at Los Angeles, Calif. and at additional mailing offices. Authorized as second-class mail by the Post Office Dept., Ottawa, Canada and for payment of postage in cash. Direct subscription inquiries to PEOPLE WEEKLY, Time & Life Building, Chicago, Ill. 60611. POSTMASTER: Send address changes to PEOPLE WEEKLY, Time & Life Building, 541 N. Fairbanks Court, Chicago, Ill. 60611. Send all other mail to PEOPLE WEEKLY, Time & Life Building, Rockefeller Center, New York, N.Y. 10020. The editors assume no responsibility for unsolicited photographs and manuscripts, which must be accompanied by a self-addressed, stamped envelope if the material is to be returned.  
©1984 Time Inc. All rights reserved. Reproduction in whole or in part without written permission is prohibited. PEOPLE WEEKLY is a registered trademark of Time Incorporated.

AA AA



**The soap wedding of the year: Greg & Jenny**

**Chris Evert &  
the rock star**

**Scarface's sis**

**Silkwood: the  
kids & lovers  
she left behind**

FEBRUARY 20, 1984 ■ \$1.25

# People

weekly



## John's Last Songs

**Yoko's bittersweet  
story of Lennon's  
final days and  
their new  
hit album**



MereMart.com®

*Vintage Magazines for Special People*

