

PSYCHOLOGY TODAY

FEATURES

26 Through a Lens, Darkly

BY MICHAEL FLEMING AND ROGER MANVELL

The images of madness presented in films throughout the past decades reflect changing psychological and psychiatric theories and practices.

36 The Long Goodbye

BY DIANE VAUGHAN

Couples in troubled relationships often go to great lengths to suppress their unhappiness, burying signals of dissatisfaction in everyday routine.

44 China's Only Child

BY ELIZABETH HALL

The "one-child policy" has indeed cut population growth. But will it also create a generation of selfish youngsters with difficulty adjusting to a socialistic society?

PROFILE: JOSEPH PLECK

48 Real Man Redux

BY MICHAEL S. KIMMEL

In his personal life and in his public views, this social psychologist has defied and contradicted the traditional view of masculinity.

A CORPORATE SURVEY

54 Bigger Pay for Better Work

BY JACK C. HORN

A look at how United States companies are motivating their employees to improve productivity so they can compete in foreign markets.

60 When a Child Dies

BY RONALD J. KNAPP

Intense grieving, depression, a return to religion, even thoughts of death are common among parents experiencing one of life's most devastating losses.

COVER PHOTOGRAPH BY KATHIE MCGINTY; Hair by Lance Loppin for Lance Loppin Salon; Make-Up by Lona Gersman; Styling by Mallory Samson; Women's clothes by OMO Norma Kamali; Men's clothes by Alexander Julian



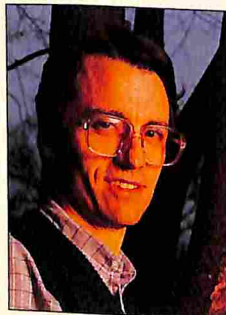
PAGE 26



PAGE 36



PAGE 44



PAGE 48



DEPARTMENTS

4 LETTERS

68 RESOURCES

CROSSTALK

6 ADOLESCENCE

An Eye on the Future by Jerald G. Bachman

10 THE SEXES

11 WORK MARKETPLACE

12 PUBLIC SECTOR

Help on the Highway by Paul McCarthy

16 THE SENSES

18 STATES OF MIND THE BRAIN

20 CHILDREN THE FAMILY

22 BODY

24 PERCEPTION

BOOKS

69 REVIEW/Intercourse by Andrea Dworkin

71 BRIEFLY NOTED

80 REVIEW/The Japanese Educational Challenge by Merry White

EXECUTIVE AND EDITORIAL OFFICES: Psychology Today Magazine, (USPS # 504-170), 1200 Seventeenth St., N.W., Washington, D.C. 20036. Editorial contributions must be accompanied by return postage and will be handled with reasonable care. Publisher assumes no responsibility for return of unsolicited art, photos or manuscripts. Published monthly. Volume 21, Number 7. POSTMASTER: Send address changes to Psychology Today, P.O. Box 2563, Boulder, Colo. 80322.

Second-class postage paid at Washington, D.C. 20036 and at additional mailing offices. Canadian postage paid at Winnipeg, Manitoba. One-year subscription rate for U.S. and possessions, \$15.99; Canada, \$18.99. All other countries one-year subscription rate \$20.99, cash orders only, payable in U.S. currency. Subscription orders, problems and address changes send to: PSYCHOLOGY TODAY, Customer Service, P.O. Box 2563, Boulder, Colo. 80322.

The Mad Mad Mad Mad World of the Movies

PSYCHOLOGY TODAY[®]

JULY 1987 \$1.95

BREAKING

IT

DECEPTION
& COVER-UP
IN FAILING
RELATIONSHIPS

A Corporate Survey
Bigger Rewards =
Better Performance
The Liberated
Man

Man

#221B*****S-DIGIT 55414
#FLL0204C094#
490684 FLL 0204C092 3418 JUN88
E027A42782
CHARLENE V FOLLETT 07#Y0
204 CECIL ST SE
MINNEAPOLIS MN 55414



70989 35282