

**R
&T**

ROAD & TRACK

August 1965

VOLUME 16, NUMBER 12

ROAD TESTS

- 425 bhp Corvette—new 396-cu-in. engine gives new muscle to the Sting Ray 28
 Renault R-8 Gordini—a new name for performance in this French car 62

FEATURES

- Grand Prix Engines—a review of the engines used in the 1.5-liter formula 21
 Wally Hassan—the man from Coventry Climax responsible for the Flat-16 26
 Two Show Corvettes—which may offer hints about the next model 32
 Concours d'Elégance—a definition and a discussion by Warren W. Fitzgerald 46
 Special color section—the brilliant world of the Concours d'Elégance 49
 Dino Ferrari—new 1600-cc sports car based on the V-6 Grand Prix car 68
 Indianapolis between races—showing that there is no off season at Indy 70
 Brothers under the grin—a used car salesman is a used car salesman 73
 32-valve Climax engine—the latest version of the V-8 Coventry Climax 76
 Ecco la Moostang—Henry Manney tells about driving a Mustang in Europe 77
 Stromberg CD Carburetor—a tuning article for the do-it-yourself man 83
 Hillclimb in Moab, Utah—and it would be hard to find a better setting 88

COMPETITION

- 49th Targa Florio—local schoolmaster Vaccarella leads a Ferrari victory 34
 The Adventures of Cyclops 007—what really happened at the Targa Florio 40
 Nurburg Ring 1000 km Race—Fords fail as the Ferraris win it again 53
 Indianapolis 500 Review—Clark plus Lotus-Ford equals easy victory 66
 Three other races—reviews of races at Monza, Oulton Park and Spa 91

DEPARTMENTS

- People & Places 2 Letters 4 Years Ago 12 Time & Place 14
 Miscellaneous Ramblings 17 Technical Correspondence 94
 Books 99 Index to Advertisers 99 PS 100

COVER

Flat-16 Grand Prix engine from Coventry Climax—photo by Geoffrey Goddard

Editor: DEAN BATCHELOR
 Executive Editor: JAMES T. CROW
 Technical Editor: RON WAKEFIELD
 Managing Editor: DAVE BLACK
 Editorial Assistant: DOROTHY CLENDENIN
 European Editor: HENRY N. MANNEY
 Art Director: HAL CRIPPEN
 Art Associate: WILLIAM A. MOTTA
 Art Associate: BARBARA BOYTER
 Art Assistant: RAMONA BOLHOUS
 Circulation Manager: RAY POWERS
 Subscription Fulfillment: VIRGINIA BUNDY

Publishers: JOHN BOND, ELAINE BOND
 Publishers' Assistant: JEAN WHITE

Contributing Editors:
 HANSJÖRG BENDL GRIFF BORGESON
 RUSSELL BROCKBANK ALICE BIXLER
 DENNIS CIPNIC JON DAHLSTROM
 GEOFFREY GODDARD TONY HOGG
 GUNTHER MOLTER BILL NEALE
 ROGER PROULX TOBY NIPPEL
 HOWARD SHOEMAKER JACK SMITH

ROAD & TRACK is published monthly by John R. Bond, Inc., 834 Production Place, Newport Beach, Calif. 92663. Second Class Postage paid at Newport Beach, California, and at additional mailing offices. Copyright 1965; John R. Bond, Inc.

SUBSCRIPTIONS. U.S., possessions, and Canada: \$5 one year, \$9 two years and \$12 three years. Single copy 50 cents (60 cents in Canada). All other countries: \$6.00 one year, \$11.00 two years, \$15.00 three years. Foreign countries and Canada: remit by money order or draft on a bank in the U.S., payable in U.S. funds.

CHANGE OF ADDRESS. At least four weeks' notice is required for a change of address. Please



Advertising Director: BEN LAMASTER, 366 Madison Avenue, New York, N.Y. 10017, YUkon 6-1735.

Western Advertising Mgr.: RICHARD BARTKUS, 834 Production Place, Newport Beach, California

furnish both old and new address, with an address imprint from a recent issue. Send to: Road & Track, 834 Production Place, Newport Beach, California 92663.

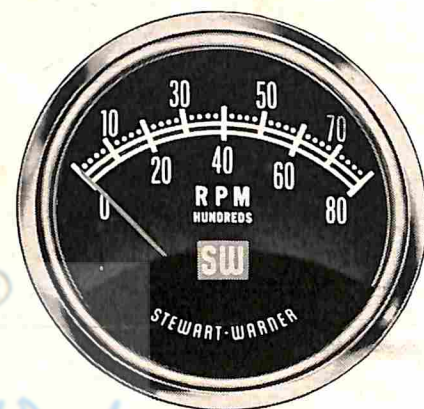
EDITORIAL CONTRIBUTIONS are welcomed by ROAD & TRACK but cannot be considered unless guaranteed exclusive. Photographs should be released for publication by source. Not responsible for return of unsolicited manuscripts, photos or drawings unless accompanied by self-addressed stamped envelope.

92663, Midway 6-3981.
 Midwest Advertising Manager: FRANK WILLARD, 2102 Penobscot Bldg., Detroit, Michigan 48226, WOODWARD 3-1775.
 Advertising Assistant: SHIRLEY MEYERS.

You've laid on heavy-duty shocks, installed a free-flow exhaust and super-tuned your engine

Now let's get serious about complete instrumentation.

You need more than four on the floor and a swinger in the other bucket to put you in the winner's circle. You have to be one up on engine conditions, throughout the course.



Stewart-Warner racing instruments are the fast, accurate way to keep tabs. Sturdy Bourdon tube gauges: electric tachometers, speedometers, and special purpose gauges. Assemble a complete set in Custom, Standard Black & White, or Twin-Blue dials. Mount in any of our specially-designed gauge-holding panels for convenience and complete flexibility.



See your Stewart-Warner dealer. He's serious about instrumentation. No wonder. He has the most complete line in America.

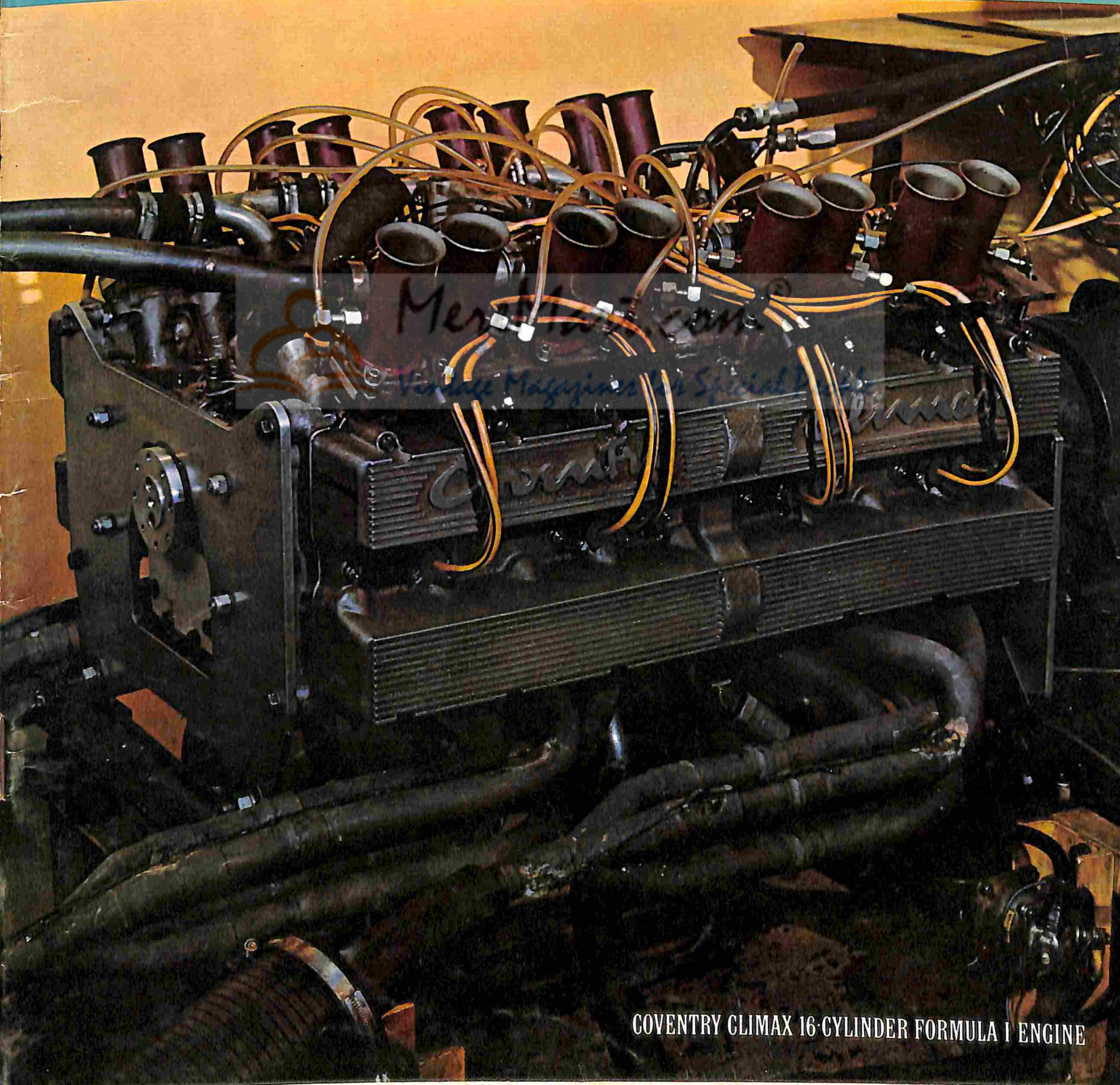
STEWART-WARNER 
INSTRUMENT DIVISION
 Dept. M-85, 1840 Diversey Pkwy., Chicago, Ill. 60614

Road Tests: 425 HP Sting Ray, Renault R-8 Gordini

ROAD & TRACK ^{ICD}

AUGUST 1965 THE MOTOR ENTHUSIASTS' MAGAZINE 3/6 IN ENGLAND 60¢ IN CANADA 50 CENTS

1965 GRAND PRIX ENGINES ANALYZED



COVENTRY CLIMAX 16-CYLINDER FORMULA 1 ENGINE