

# The AMERICAN RIFLEMAN

Official Journal of the National Rifle Association of America

1600 RHODE ISLAND AVENUE, N.W., WASHINGTON 6, D. C.

VOLUME 96

NUMBER 8

AUGUST

1948

Random Shots . . . . .	8
AN EDITORIAL	
The Club Came Back! . . . . .	9
BY COLONEL W. D. FRAZER	
School for Juniors . . . . .	12
A PICTURE STORY	
I Walked Alone . . . . .	16
BY LEWIS V. CUMMINGS	
How Accurate Are They? . . . . .	20
BY FRED M. SEGUIN	
Olympic Squad Sails . . . . .	23
Miser's Magnum . . . . .	24
BY BILL CORSON	
We Bow to the Inevitable . . . . .	27
DCM Treasure, Part II . . . . .	28
BY T. B. GRESHAM	
Amazing Old Lady . . . . .	32
BY H. V. STENT	
Telescope Modifications . . . . .	35
BY GEORGE R. PARIZEK	
Championships at Convention . . . . .	38
So You Don't Improve, Eh? . . . . .	40
BY WILLIAM E. PETERSON	
'Ain't a God's Turkey' . . . . .	43
BY ARCHIBALD RUTLEDGE	
Old Coach . . . . .	51

☆ ☆ ☆

C. B. LISTER, Editor

JOHN SCOFIELD, Managing Editor

J. S. HATCHER, Technical Editor

J. A. HARPER, Associate Editor

R. J. STANN, Associate Editor

L. Q. BRADLEY, Circulation

F. A. MOULTON, Advertising

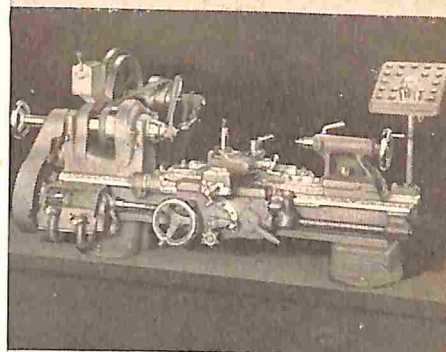
J. T. BERRYMAN, Art

P. B. CARDINAL, News

R. L. REISH, Photography

AUGUST, NINETEEN FORTY-EIGHT

## SOUTH BEND 9" TOOLROOM LATHE



for Critical  
Gunsmiths

9" x 3' Toolroom Bench Lathe with handwheel collet chuck; collet rack; taper attachment; thread dial; micrometer carriage stop; 1/2 h.p., 1 phase, 115 volt, 60 cycle motor and switch. **\$486<sup>70</sup>**

Built for exacting industrial work, the South Bend 9" Toolroom Lathe satisfies the demands of critical gunsmiths. Its accuracy simplifies precision jobs and permits work of the finest professional quality.

This model also gives you other features found in higher priced lathes. It has super-finished spindle bearings; hand-scraped bed ways; universal apron; 12 spindle speeds; gear box for 48 thread cutting feeds, 48 power cross feeds, 48 power longitudinal feeds; 1/2" maximum collet capacity; and 3/4" spindle bore.

Write for catalog for complete information or see our local distributor. You will find him listed under "Machine Tools" or "Machinery" in your classified phone book.

### NEW 14 INCH DRILL PRESS

A ruggedly built tool unsurpassed for accuracy and dependability. Features free-floating spindle, precision ball bearings, quick-acting belt tension release.

Bench model . . \$129.30

Floor Model . . \$144.30

(f.o.b. factory with chuck and 1/2 h.p. motor)



### SOUTH BEND LATHE WORKS

Building Better Tools Since 1906

452 EAST MADISON STREET  
SOUTH BEND 22, INDIANA



AUGUST  
1948

# THE AMERICAN RIFLEMAN

25  
CENTS



MereMart.com®

Gift Quality Vintage Magazines

398 2sp March-50 N 39  
F. Marshall Robins  
3102 Allendale Ave.  
Duluth, 3, Minnesota