

Ake Lundberg photo

# To the Home of the ANGELS!

Over a hundred years ago some German immigrants bought a parcel of land along the Santa Ana River in southern California, formed a settlement, and called it, appropriately, "Anaheim." Fifty years later the sleepy little village amid the orange, lemon, walnut and avocado groves became a favorite retirement spot for Iowa farmers.

Today Anaheim is a lively city of 180,000 people, the home of Disney-land and the California Angels baseball team, and is located in the heart of Orange County, with a population of seven million within an hour's drive.

Taking place in the sparkling new 42,000-seat Anaheim Stadium late this month will be what has been called locally "the most significant event in the history of the Christian church in southern California." The official name for it is the "Southern California Billy Graham Crusade," scheduled for September 26 to October 5.

Joining in the event will be more than 2,500 churches of the area. Volunteers have been drawn into the preparation from 27 sister cities in Orange County, as well as from Los Angeles, San Bernardino, Riverside, Santa Barbara and Ventura Counties. The geographical outreach of church participation is officially set at Santa Barbara in the north, San Diego in the south, San Bernardino

in the east, and the Pacific Ocean in the west.

At press time the range of local and regional television coverage of the Crusade services was still not determined, but a series of nationwide telecasts across the United States and Canada was clearly contemplated.

As in Pittsburgh, Melbourne and New York, the Crusade will make a major appeal to high school youth and university students. Heavy participation by church youth groups and youth organizations has been reported by the Reverend Harry B. Williams, Crusade director. Youth council member Dick Day has organized an extensive beach ministry

at Balboa, and will be taking the Gospel message of the Crusade to campuses through hundreds of co-operating Christian groups. Three "youth nights" are planned: on Monday, Thursday and Saturday nights—September 29, October 2 and October 4.

More than three hundred laymen have formed a support council to promote the Crusade. Mr. Robert Jones organized 500 small Bible discussion leadership training classes in local churches. David Paynter is chairman of the Laymen's Council.

In addition 10,000 persons attended Christian Life and Witness classes. Mrs. Ruth Graham, the wife of the evangelist, will speak to some five thousand women at a luncheon on Monday, September 15, at the Anaheim Convention Center. Three thousand ushers have been recruited for the stadium and potentially a 5,000-voice choir will be singing nightly.

History was written at the Los Angeles Crusades conducted by the Graham Team in 1949 and 1963. If Anaheim is to be measured against those campaigns, it should perhaps be in depth of penetration into the local church, and in the breadth of the Crusade's scope, according to Mayor Lorin Griset of Santa Ana, a Christian layman who is serving as Crusade chairman. By chartered plane and train and bus people will be coming to Anaheim from cities and towns of California, Oregon, other parts of the United States, and even from overseas.

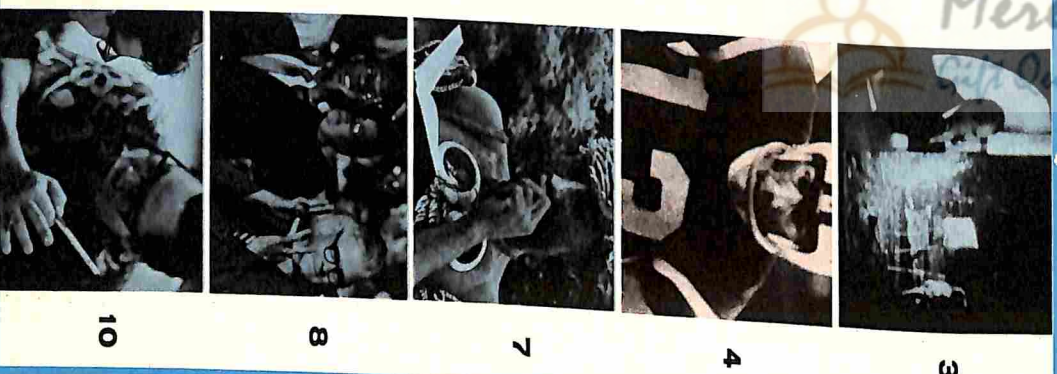
First vice chairman of the Crusade is the Reverend Robert Schuller of Garden Grove Community Church. The Reverend Ted Cole of First Baptist Church, Pomona, is chairman of counseling and follow-up; he reports that over a thousand commitments to Christ were made during the preparatory Christian Life and Witness classes just concluded. Chairman of the youth council is the Reverend James Ferguson of the staff of First Presbyterian Church of Hollywood. Mrs. Earl Mooney of Fullerton is chairman of the women's prayer program which has arranged for 10,000 homes to be open for prayer for the Crusade. Won't you join these Californians in praying for Anaheim?

## DECISION

SEPTEMBER 1969

### Contents:

ON COURSE TO HEAVEN	1	Billy Graham
COME BACK AND HELP US SINGING LOVE!	2	Editorial
THE NEW MOON AND THE NEW MAN	2	Linda Jarrinen
INTO THE CLEAR	3	Sherwood E. Wirt
BIBLE STUDY	4	Don Magnard
THE WAY TO GOD	5	Jeremiah; Mark
A BETTER COUNTRY	6	"The Cloud of Unknowing"
GOD IN THE BIG TOWN	7	George Waller
A BOUQUET FROM THE GARDEN	8	New York Crusade
MESSAGE IN THE MAKING	10	Stories from the Crusade
	14	L. L. Leglers



3

4

7

8

10



See the New York Crusade in color on nationwide television, three evenings beginning in most cities on September 2. Consult your newspaper for exact dates, times and channels

# DECISION

SEPTEMBER 1969

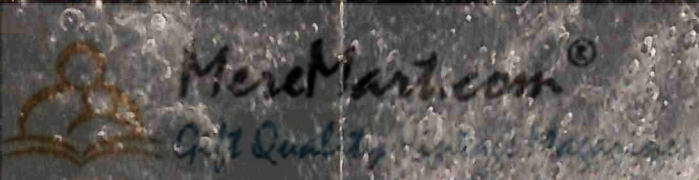
DECISION 55440

## ON COURSE TO HEAVEN

by BILLY GRAHAM

When the American astronauts astonished the human race last July with their spectacularly successful visit to the moon, they took the Apollo 11 on a very narrow trajectory through space. Only the tiniest margin for deviation was permitted, and flight corrections were made periodically throughout the historic voyage. Now suppose the NASA control center in Houston had received word from the Apollo 11 that the astronauts were off course, and Houston

continued on page 14



Here are some spiritual implications of man's achievement in setting foot on the moon. For further comment, see page 3