

## CONTENTS

### THE WEEK'S EVENTS

The U.S. Relaxes.....	29
Editorial: The First Peace Conference.....	36
Statue of Christ Lies Intact in Bombed Nagasaki.....	37
Strikes Stud U.S.....	38
New York Banquet Honors Al Smith.....	40
Elephant Is Last Survivor in Berlin Zoo.....	42
General Marshall Tells Official Story of War.....	45
President Roosevelt Had Secret Retreat in Maryland's Mountains.....	101

### ARTICLE

Expectant Mother's Parachute Jump, by Mary Johnson Tweedy.....	67
--	----

### CLOSE-UP

Harold's Club, by Roger Butterfield.....	116
--	-----

### PHOTOGRAPHIC ESSAY

Displaced Germans Pour Unwelcome into Berlin.....	107
---	-----

### THEATER

"Deep Are the Roots".....	51
---------------------------	----

### SPORTS

Football Giants Develop New "A" Formation.....	57
--	----

### SCIENCE

Railroad Worm.....	63
Wisconsin's Intellectual Monkeys.....	95

### AVIATION

Army Uses Robot Airplanes for Gunnery Targets.....	77
--	----

### ART

Doris Lee Paints Impressions of Hollywood.....	84
--	----

### MODERN LIVING

Fall Jewelry.....	91
-------------------	----

### MOVIES

"The Lost Weekend".....	133
-------------------------	-----

### OTHER DEPARTMENTS

Letters to the Editors.....	4
Speaking of Pictures: Zero Mostel Shows What Waiters Must Forget.....	14
LIFE's Reports: Farmer Truman, by Frank McNaughton and Walter Hehmyer.....	18
LIFE Dances La Bamba in Mexico City.....	140
Miscellany: Sunken-Treasure Hunt.....	146

ALL MATERIAL WHICH IN THE OPINION OF THE EDITORS INVOLVES MILITARY SECURITY HAS BEEN SUBMITTED TO COMPETENT MILITARY OR NAVAL AUTHORITY FOR REVIEW AS TO SECURITY. THE COVER AND ENTIRE CONTENTS OF LIFE ARE FULLY PROTECTED BY COPYRIGHTS IN THE UNITED STATES AND IN FOREIGN COUNTRIES AND MUST NOT BE REPRODUCED IN ANY MANNER WITHOUT WRITTEN PERMISSION

### LIFE'S PICTURES



LIFE's Sam Shere became the first civilian photographer to fly in close formation with a pilotless airplane when he took pictures for the robot-airplane story on pages 77 to 80. He found it an eerie experience to look into the empty cockpit of the plane cruising just a few feet from him, though it was perfectly flown by remote control. Shere used five different cameras to photograph the radio planes. He tried a sixth, the new electrically operated K-25 when he did the football-tactics story on pages 57 to 60.

The following list, page by page, shows the source from which each picture in this issue was gathered. Where a single page is indebted to several sources, credit is recorded picture by picture (left to right, top to bottom) and line by line (lines separated by dashes) unless otherwise specified.

COVER—EWING KRAININ	57—SAM SHERE—charts by ANTHONY SODARO
8—ALFRED EISENSTADT-PIX	58, 59, 60—SAM SHERE
10—MUSEUM OF MODERN ART	63, 65—F.W. GORO
13—PETER STACKPOLE	67, 69, 72—Drawings by FRED WREN
14, 15, 17—GEORGE KARGER-PIX	77, 78, 79, 80—SAM SHERE
18—ACME	81 through 89—Paintings by BORIS LEE
27—AIR TECHNICAL SERVICE COMMAND	91, 92—EWING KRAININ
PHOTO	95, 96, 97, 98—MYRON DAVIS
29—SAM SHERE	101, 102, 104—GEORGE SKADDING
30, 31—MYRON DAVIS ET AL. PAT ENG-USH	107 through 115—LEONARD MC COMBE
32, 33—PAT ENGLISH	116—HANS WILD
34, 35—GABRIEL BENZUR	117, 118—PAT ENGLISH
37—BERNARD HOFFMAN	120—HANS WILD
38—Map by FRANK STOCKMAN & ANTHONY SODARO—A.P.	122, 125—PAT ENGLISH
39—NEW YORK DAILY NEWS PHOTO by CHARLES HOFF	126, 128—TONI NICHOLS
40, 41—W.W., HERBERT GEHR	131—BETTY POPKIN
42—LEONARD MC COMBE	133, 134—PARAMOUNT PICTURES
45—Adapted from WAR DEPARTMENT MAP—A.P.	135—PARAMOUNT PICTURES—RALPH CRANE from B.S. (2)—RALPH CRANE from B.S.
51, 52, 54—EILEEN DARBY-GRAPHIC HOUSE	136, 139—PARAMOUNT PICTURES
	140, 141, 142, 145—WALLACE KIRKLAND
	140, 147, 148—CARL MYDANS



country-fresh!

That's the cue these days . . . because charming city cousins are copying the County Belle! Easy enough to achieve her air of sun-washed radiance. Wear Yardley English Lavender . . . a scent completely disarming . . . as every Nature's daughter ought to know!

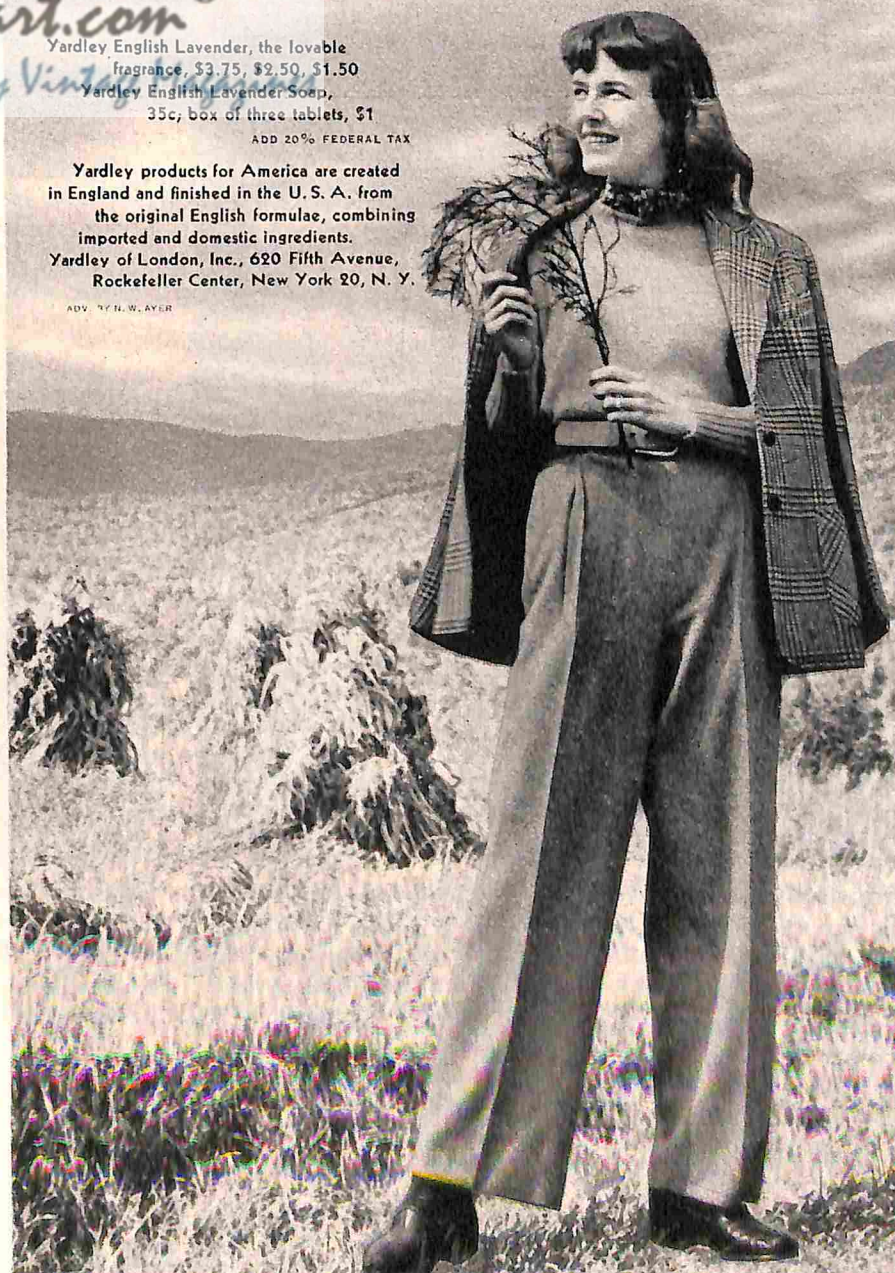
## YARDLEY ENGLISH LAVENDER

Yardley English Lavender, the lovable fragrance, \$3.75, \$2.50, \$1.50  
Yardley English Lavender Soap, 35c; box of three tablets, \$1

ADD 20% FEDERAL TAX

Yardley products for America are created in England and finished in the U. S. A. from the original English formulae, combining imported and domestic ingredients.  
Yardley of London, Inc., 620 Fifth Avenue, Rockefeller Center, New York 20, N. Y.

ADV. BY H. W. AYER



FREE



MereMart.com®  
Gift Quality Vintage Magazines

FALL JEWELRY

OCTOBER 15, 1945 **10** CENTS  
BY SUBSCRIPTION: TWO YEARS \$8.50

REG. U. S. PAT. OFF.