

# GOINGS ON ABOUT TOWN

A CONSCIENTIOUS CALENDAR OF EVENTS OF INTEREST

## THE THEATRE

### PLAYS AND MUSICALS

**AMERICAN BUFFALO**—A superb production of David Mamet's classic comedy about three inept practitioners of petty crime in the lower depths of Chicago. With Al Pacino and J. J. Johnston. Directed by Arvin Brown. (Reviewed in our issue of 11/7/83.) (Booth, 222 W. 45th St. 239-6200. Nightly at 8. Matinée Saturday at 2. Closes Saturday, Feb. 4.)

**AND A NIGHTINGALE SANG**—A pleasant comedy about life in England during the Second World War. Written by C. P. Taylor and directed by Terry Kinney. (12/12/83) (Mitzi E. Newhouse Theatre, Lincoln Center. 799-9100. Nightly, except Sundays, at 8. Matinées Wednesdays and Saturdays at 2.)

**BABY**—Everything you may not have wanted to ask about having a baby—a pleasant musical for doctors, if not for lay people. (12/12/83) (Ethel Barrymore, 243 W. 47th St. 239-6200. Nightly, except Sundays, at 8. Matinées Wednesdays and Saturdays at 2.)

**BECOMING GARCIA**—A play by Tato Laveria about a middle-class Hispanic family on the lower East Side. Opens Thursday, Feb. 2, and will run through Sunday, Feb. 19. (Henry Street Settlement's New Federal Theatre, 466 Grand St. 598-0400. Thursdays through Sundays at 7:30. Matinées Sundays at 3.)

**BECKETT PLAYS**—Three brief plays by Samuel Beckett. The haunting "Catastrophe," starring Kevin O'Connor, first appeared in this magazine. Alan Schneider is the impeccable director. (6/27/83) (Harold Clurman, 412 W. 42nd St. 594-2370. Tuesdays through Saturdays at 8, and Sundays at 7. Matinées Saturdays at 2:30 and Sundays at 3.)

**BRIGHTON BEACH MEMOIRS**—A remembrance of things past, by Neil Simon. The hero is a sex-obsessed fifteen-year-old. (4/11/83) (Neil Simon, 250 W. 52nd St. 757-8646. Tuesdays through Saturdays at 8. Matinées Wednesdays and Saturdays at 2, and Sundays at 3.)

**LA CAGE AUX FOLLES**—A dazzling production of a musical that has little wit and a lot of phony sentimentality about the tenderhearted family life of homosexuals. The music, by Jerry Herman, is Broadway-romantic. The two superb stars are George Hearn and Gene Barry. (9/5/83) (Palace, Broadway at 47th St. 757-2626. Nightly, except Sundays, at 8. Matinées Wednesdays and Saturdays at 2.)

**CRIMINAL MINDS**—Three first-rate actors—John Glover, Leo Burmester, and Pamela Reed—play a couple of escaped convicts and the girlfriend of one of them in Robin Swicord's very funny comedy. David Trainer was the fine director. (1/23/84) (Production Company Theatre, 15 W. 28th St. 686-1470. Wednesdays through Saturdays at 8, and Sundays at 7. Matinées Saturdays at 3 and Sundays at 2. Closes Sunday, Feb. 12.)

**DO LORD REMEMBER ME**—A revival of James de Jongh's dramatic play, made from reminiscences of former slaves who were still alive in the nineteen-thirties. With Frances Foster, Gian Carlo Esposito, Ebony Jo-Ann, Lou Myers, and Roger Robinson. Staged by Regge Life. (American Place, 111 W. 46th St. 247-0393. Wednesdays through Saturdays at 8. Matinées Wednesdays and Saturdays at 2, and Sundays at 3. Closes Sunday, Feb. 19.)

**DOONESBURY**—A sunny, sometimes silly, but always beguiling musical about Garry Trudeau's celebrated comic-strip hero and his friends. Music by Elizabeth Swados, lyrics by Mr. Trudeau, and delightful performances by, among others, Ralph Bruneau, Kate Burton, Gary Beach, and Reathel Bean. (12/5/83) (Biltmore, 261 W. 47th St. 582-5340. Tuesdays through Saturdays at 8.

S	M	T	W	T	F	S
			1	2	3	4
5	6	7	8	9	10	11

Matinées Wednesdays and Saturdays at 2, and Sundays at 3.)

**FOOL FOR LOVE**—Sam Shepard's play is as near a miracle as makes no matter—mysterious, funny, and beautiful. It is about two battling, loving lovers in a motel room at the edge of the Mojave Desert and about many other matters as well. Mr. Shepard directed. (6/6/83) (Douglas Fairbanks, 432 W. 42nd St. 239-4321. Tuesdays through Fridays at 8; Saturdays at 7 and 10; and Sundays at 7. Matinées Sundays at 3.)

**THE GLASS MENAGERIE**—Jessica Tandy in a highly intelligent reading of Amanda Wingfield as a holy terror. (12/12/83) (Eugene O'Neill, 230 W. 49th St. 246-0220. Tuesdays through Saturdays at 8. Matinées Wednesdays and Saturdays at 2, and Sundays at 3.)

**HEARTBREAK HOUSE**—Rex Harrison is crowning his career with a superb enactment of Captain Shotover—perhaps the figure that Shaw at sixty imagined he would be at eighty-eight. Also in the cast are Rosemary Harris, Amy Irving, Dana Ivey, and Philip Bosco. (12/19/83) (Circle in the Square, 50th St. west of Broadway. 581-0720. Wednesday through Saturday at 8. Matinées Wednesday and Saturday at 2, and Sunday at 3. Closes Sunday, Feb. 5.)

**THE HUMAN COMEDY**—This oratorio, based on

William Saroyan's novel about a family in California during the Second World War, has an enchanting, witty score by Galt MacDermot, and it is extremely well performed by the singers under Wilford Leach's direction. Mr. Saroyan's unabashed sweetness of spirit, which is engaging in the first act, becomes troublesome in the second, which deals, in large part, with military life and death. With Delores Hall, Stephen Geoffreys, Rex Smith, Mary Elizabeth Mastrantonio, Josh Blake, David Johnson, and Bonnie Koloc. (1/9/84) (Public, 425 Lafayette St. 598-7150. Nightly, except Mondays, at 8. Matinées Saturdays and Sundays at 3.)

**IAN MCKELLEN ACTING SHAKESPEARE**—Ian McKellen has been playing a variety of Shakespearean roles ever since he was an undergraduate at Cambridge. He has thought a lot about these roles in the course of playing them, and his present one-man show amounts to a learned, witty, and highly informal disquisition on the Bard. (1/30/84) (Ritz, 219 W. 48th St. 582-4022. Tuesdays through Saturdays at 8. Matinées Wednesdays and Saturdays at 2, and Sundays at 3. Closes Sunday, Feb. 19.)

**ISN'T IT ROMANTIC**—A spirited revival of Wendy Wasserstein's sometimes painful but always witty comedy about a pair of female "best friends" at age twenty-eight, and especially about the trials of one of them, Janie Blumberg. The script has been somewhat revised, and the production, under Gerald Gutierrez's direction, is much fuller than it was originally. With Lisa Banes, Jo Henderson, Jerry Lanning, Stephen Pearlman, Tom Robbins, Christine Rose, Chip Zien, and with Betty Comden as Mother. (12/26/83) (Playwrights

## TABLE OF CONTENTS

THE TALK OF THE TOWN	37
"GOING INTO EXILE"	42
"FARBER AND MR. WHITE"	46
"ITALIAN DAYS" (POEM)	50
REFLECTIONS (NUCLEAR WEAPONS—PART I)	52
THE ART WORLD	74
A REPORTER AT LARGE (ZAIRE)	83
THE CURRENT CINEMA	118
BOOKS	124
BRIEFLY NOTED	125

COVER: Iris Van Rynbach

DRAWINGS: Robert Mankoff, Boris Drucker, James Stevenson, Arnie Levin, Joseph Farris, William Steig, Robert Weber, Henry Martin, Stan Hunt, Lee Lorenz, Charles Saxon, Sidney Harris, Eldon Dedini, Warren Miller, Bernard Fuchs, Bernard Schoenbaum, Joseph Mirachi, Edward Koren

## THE NEW YORKER

25 WEST 43RD STREET, NEW YORK, N.Y. 10036  
(212) 840-3800

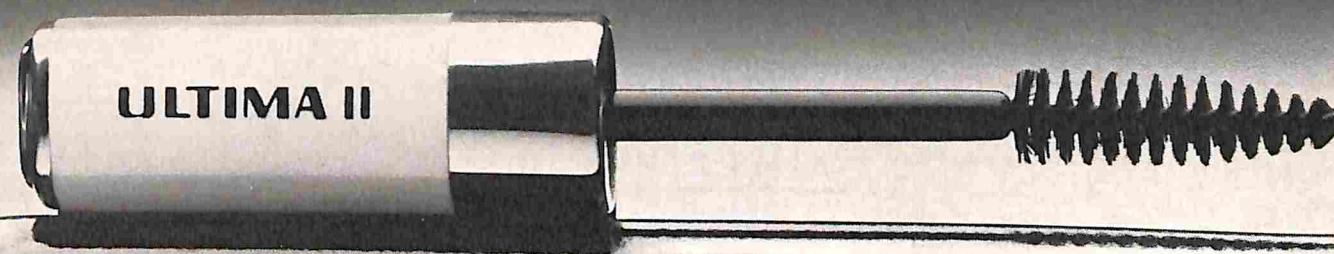
## CHANGE OF ADDRESS

In ordering a change of address, subscribers should give four weeks' notice, providing both old and new addresses, with Zip Codes. If possible, please send the address label from a recent issue.

THE NEW YORKER (ISSN 0028-792X), published weekly by The New Yorker Magazine, Inc., 25 W. 43rd St., N.Y., N.Y. 10036; Peter F. Fleischmann, chairman; George J. Green, president; J. Kennard Bosc, vice-president & treasurer; Milton Greenstein, Sam R. Spoto, vice-presidents; Elaine M. Matteo, secretary; Robert F. Young, advertising director. Branch advertising offices: 111 East Wacker Drive, Chicago, Ill. 60601; 155 Montgomery St., San Francisco, Calif. 94104; Suite 2360, 5900 Wilshire Blvd., Los Angeles, Calif. 90036; 1175 Peachtree St. N.E., Atlanta, Ga. 30361; 67½ Chestnut St., Boston, Mass. 02108; 21 Grosvenor St., London, W1X 0ED. Vol. LIX, No. 51, February 6, 1984. Second-class postage paid at New York, N.Y., and at additional mailing offices. Authorized as second-class mail by the Post Office Department, Ottawa, Canada, and for payment of postage in cash. © 1984 by The New Yorker Magazine, Inc., in the United States and Canada. All rights reserved. No part of this periodical may be reproduced without the consent of The New Yorker. Printed in U.S.A. Subscription rates: In U.S. and possessions, one year, \$32.00; two years, \$52.00. In Canada, one year, \$44.00. Other foreign, \$52.00. POSTMASTER: Send address changes to The New Yorker, 25 W. 43rd St., New York, N.Y. 10036.

Something very important is missing from  
new Advanced Formula Mascara.

Irritants.



Yet it's truly waterproof,  
rubproof, runproof, flakeproof  
and smudgeproof.

And it comes off with soap  
and warm water (not oil).

Proof comes from clinical  
testing by leading ophthal-  
mologists and optometrists on  
contact lens wearers.

They found it to be excep-  
tionally gentle and incredibly  
beautiful on even the most  
sensitive eyes.\*

ADVANCED FORMULA MASCARA

only from

**ULTIMA II**

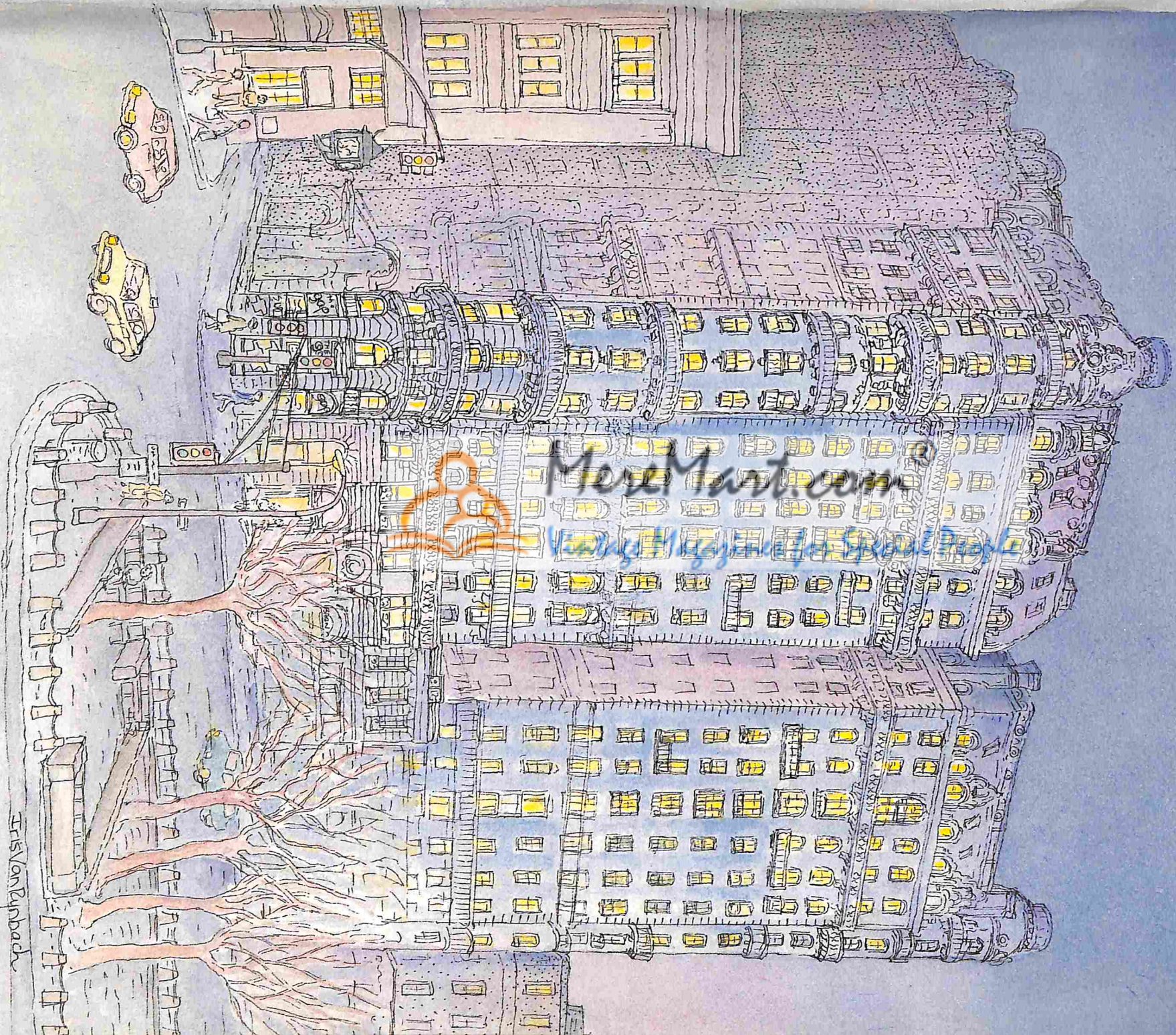


Feb. 6, 1984

THE

Price \$1.50

# NEW YORKER



Tris Van Rynbach