

# GOINGS ON ABOUT TOWN

A CONSCIENTIOUS CALENDAR OF EVENTS OF INTEREST

## THE THEATRE

### PLAYS AND MUSICALS

**BECKETT PLAYS**—Three brief plays by Samuel Beckett. The haunting "Catastrophe," in which David Warrilow gives a silent, eloquent performance, first appeared in this magazine. Alan Schneider is the impeccable director. (Reviewed in our issue of 6/27/83.) (Harold Clurman, 412 W. 42nd St. 594-2370. Tuesdays through Saturdays at 8, and Sundays at 7. Matinees Saturdays at 2:30 and Sundays at 3.)

**BIG MAGGIE**—This harsh comedy—an Irish import by John B. Keane—is about a widow and the schemes she devises to initiate her four grown children into the stringent realities of life in provincial Ireland. Ideally, the play should be performed by an Irish company, but the American actors assembled do pretty well under Donal Donnelly's direction. Robin Howard is excellent in the title role. (Reviewed in this issue.) (Douglas Fairbanks, 432 W. 42nd St. 239-4321. Tuesdays through Saturdays at 8. Matinees Wednesdays and Saturdays at 2, and Sundays at 3.)

**BREAKFAST WITH LES AND BESS**—Holland Taylor and Keith Charles in a comedy by Lee Kalcheim. (Lamb Theatre, 130 W. 44th St. 997-1780. Tuesdays through Saturdays at 8. Matinees Wednesdays and Saturdays at 2, and Sundays at 3.)

**BRIGHTON BEACH MEMOIRS**—Neil Simon looks back with fondness upon his youth in the gloomy thirties. Now with Fisher Stevens as the wisecracking adolescent Neil. (4/11/83) (Neil Simon, 250 W. 52nd St. 757-8646. Nightly, except Sundays, at 8. Matinees Wednesdays and Saturdays at 2.)

**LA CAGE AUX FOLLES**—A musical worth attending for the performances by George Hearn and Gene Barry as a pair of tenderhearted middle-aged lovers presiding over a drag-queen night club in Saint-Tropez and for the production itself, which is one of the most beautiful—and extravagant—ever to reach Broadway. The settings are by David Mitchell, the costumes are by Theoni V. Aldredge, and the lighting is by Jules Fisher. Jerry Herman wrote the music and lyrics, which in the context are oddly conventional; the book, by Harvey Fierstein, is a primerlike and unnecessary defense of a drag queen's capacity to experience family love. (9/5/83) (Palace, Broadway at 47th St. 757-2626. Nightly, except Sundays, at 8. Matinees Wednesdays and Saturdays at 2.)

**THE CAINE MUTINY COURT-MARTIAL**—A distinguished cast, headed by Michael Moriarty, Philip Bosco, and Joe Namath breathes plenty of life into Herman Wouk's time-tested melodrama about a Navy minesweeper in the Second World War. (5/16/83) (Circle in the Square, 50th St. west of Broadway. 581-0720. Tuesdays through Saturdays at 8. Matinees Wednesdays and Saturdays at 2, and Sundays at 3.)

**EDMUND KEAN**—Ben Kingsley in a one-man show that celebrates the disreputable personal life and brilliant professional career of the man who is generally considered one of the three or four greatest actors in British history. (Reviewed in this issue.) (Brooks Atkinson, 256 W. 47th St. 245-3430. Nightly, except Sundays, at 8.)

**EQUITY LIBRARY THEATRE**—A revival of Christopher Fry's comedy "The Lady's Not for Burning" is the first in this season's series of eight productions. (Equity Library Theatre, 103rd St. and Riverside Dr. Wednesday through Sunday at 8. Matinees Saturday and Sunday at 2:30. For information about tickets, for which contributions are requested, call 663-2028. Closes Sunday, Oct. 9.)

**FOOL FOR LOVE**—Sam Shepard's play is as near a miracle as makes no matter—mysterious,

S	M	T	W	T	F	S
			5	6	7	8
9	10	11	12	13	14	15

funny, and beautiful. It is about two battling, loving lovers in a motel room at the edge of the Mojave Desert and about many other matters as well. Will Patton and Kathy Whitton Baker have the leading roles. Mr. Shepard directed. (6/6/83) (Circle Repertory Company Theatre, 99 Seventh Ave. S., at Sheridan Sq. 924-7100. Tuesdays through Fridays at 8; Saturdays at 7 and 10; and Sundays at 7. Matinees Sundays at 3.)

**FUNHOUSE**—Eric Bogosian in a one-man show. (Actors Playhouse, 100 Seventh Ave. S., at Sheridan Sq. 691-6226. Tuesdays through Fridays at 8; Saturdays at 7 and 10; and Sundays at 7:30. Matinees Sundays at 3.)

**LIGHT OPERA OF MANHATTAN**—Two Gilbert and Sullivan productions. Through Sunday, Oct. 9: **PRINCESS IDA**. . . . Starting Wednesday, Oct. 12: **H.M.S. PINAFORE**. (Eastside, 334 E. 74th St. 861-2288. Wednesdays through Saturdays at 8. Matinees Wednesdays at 2, and Saturdays and Sundays at 3:30.)

**A LITTLE MADNESS**—A play by Gerald Zipper. Opens officially on Wednesday, Oct. 5. (Provincetown, 133 MacDougal St. 777-2571. Opening-night curtain at 7:30; there-

after Tuesdays through Fridays at 8; Saturdays at 7 and 10; and Sundays at 7:30. Matinees Sundays at 3.)

**MY ONE AND ONLY**—Tommy Tune and Twiggy are the stars of this merry, newly invented musical comedy (book by Peter Stone and Timothy S. Mayer), which brings back half a dozen superlative Gershwin songs. (5/9/83) (St. James, 246 W. 44th St. 398-0280. Tuesdays through Saturdays at 8. Matinees Wednesdays and Saturdays at 2, and Sundays at 3.)

**NIGHT, MOTHER**—Marsha Norman's eloquent play about a young woman determined to end her life, superbly acted by Kathy Bates and Anne Pitoniak. The director was Tom Moore. (4/11/83) (Golden, 252 W. 45th St. 239-6200. Tuesdays through Saturdays at 8. Matinees Wednesdays and Saturdays at 2, and Sundays at 3.)

**ON YOUR TOES**—The Rodgers and Hart musical, with choreography by George Balanchine, has survived wonderfully undiminished after the wear and tear of almost fifty years. (3/14/83) (Virginia, 245 W. 52nd St. 977-9370. Tuesdays through Saturdays at 8. Matinees Wednesdays and Saturdays at 2, and Sundays at 3.)

**QUARTERMAINE'S TERMS**—The title character of Simon Gray's funny, sad comedy is a teacher whom loneliness has made even more bubble-brained than God did. Lee Richardson plays the leading role, and he is well supported by Roy Poole, Caroline Lagerfelt, Colin Stinton,

## TABLE OF CONTENTS

THE TALK OF THE TOWN . . . . .	39
"THE COLONEL'S CHILD" . . . . .	Mavis Gallant 44
"COLUMBUS IN CHAINS" . . . . .	Jamaica Kincaid 48
"THE NEW SEASON" (POEM) . . . . .	W. S. Merwin 50
ANNALS OF DIPLOMACY (U.S. - GERMAN RELATIONS—PART I) . . . . .	Richard J. Barnett 53
"TULIPS: A SELECTED HISTORY" (POEM) . . . . .	Vickie Karp 54
OUR FAR-FLUNG CORRESPONDENTS (SENATOR BILL BRADLEY) . . . . .	John McPhee 108
A REPORTER AT LARGE (ETHANOL) . . . . .	Barry Commoner 124
THE THEATRE . . . . .	Brendan Gill 154
OFF BROADWAY . . . . .	Edith Oliver 154
MUSICAL EVENTS . . . . .	Andrew Porter 156
BOOKS . . . . .	Naomi Bliven 162
BRIEFLY NOTED . . . . .	166

COVER: Douglas Florian

DRAWINGS: James Stevenson, Charles Barsotti, Charles Saxon, Frank Modell, Arnie Levin, Joseph Mirachi, Robert Mankoff, Mischa Richter, Edward Koren, Lee Lorenz, Donald Reilly, Michael Maslin, Warren Miller, J. B. Handelsman, Bernard Schoenbaum, Tom Cheney, Roz Chast, Dana Fradon

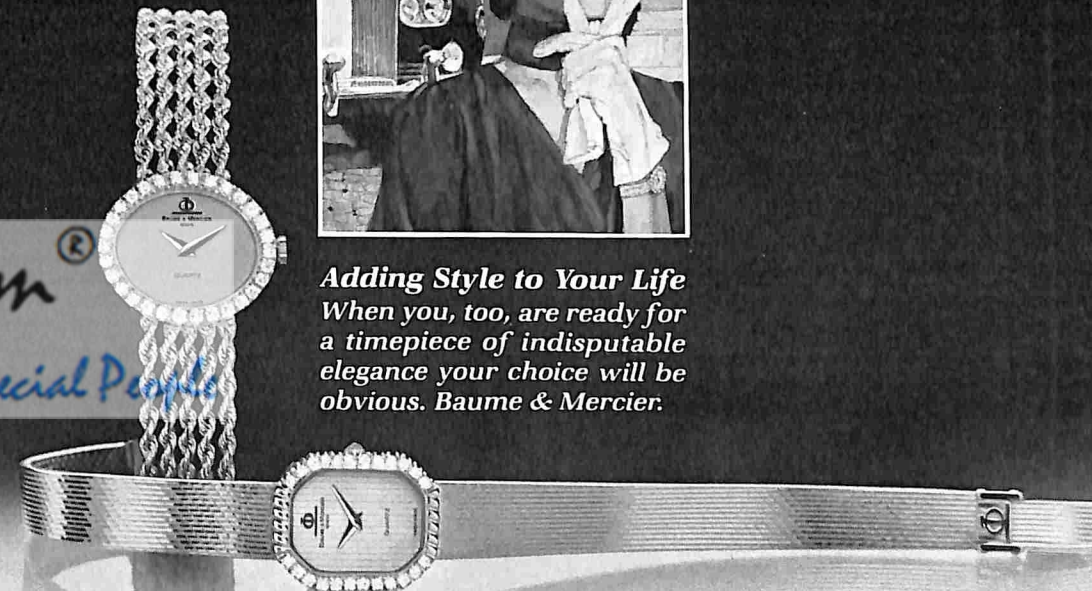
## THE NEW YORKER

25 WEST 43RD STREET, NEW YORK, N.Y. 10036  
(212) 840-3800

### CHANGE OF ADDRESS

In ordering a change of address, subscribers should give four weeks' notice, providing both old and new addresses, with Zip Codes. If possible, please send the address label from a recent issue.

THE NEW YORKER (ISSN 0028-792X), published weekly by The New Yorker Magazine, Inc., 25 W. 43rd St., N.Y., N.Y. 10036; Peter F. Fleischmann, chairman; George J. Green, president; J. Kennard Bosce, vice-president & treasurer; Milton Greenstein, Sam R. Spoto, vice-presidents; Elaine M. Matteo, secretary; Robert F. Young, advertising director. Branch advertising offices: 111 East Wacker Drive, Chicago, Ill. 60601; 155 Montgomery St., San Francisco, Calif. 94104; Suite 2360, 5900 Wilshire Blvd., Los Angeles, Calif. 90036; 1175 Peachtree St. N. E., Atlanta, Ga. 30361; 67 1/2 Chestnut St., Boston, Mass. 02108; 21 Grosvenor St., London, W1X 0ED. Vol. LIX, No. 34, October 10, 1983. Second-class postage paid at New York, N.Y., and at additional mailing offices. Authorized as second-class mail by the Post Office Department, Ottawa, Canada, and for payment of postage in cash. © 1983 by The New Yorker Magazine, Inc., in the United States and Canada. All rights reserved. No part of this periodical may be reproduced without the consent of The New Yorker. Printed in U.S.A. Subscription rates: In U.S. and possessions, one year, \$32.00; two years, \$52.00. In Canada, one year, \$44.00. Other foreign, \$52.00. POSTMASTER: Send address changes to The New Yorker, 25 W. 43rd St., New York, N.Y. 10036.



**Adding Style to Your Life**  
When you, too, are ready for a timepiece of indisputable elegance your choice will be obvious. Baume & Mercier.

Ablaze with diamonds, these 14K Gold bracelet watches are magnificent examples of Baume & Mercier's exacting standards of jewelry craftsmanship and quartz timekeeping technology. Handcrafted in limited editions for women of obvious distinction.

**BAUME & MERCIER**  
GENEVE

For color brochures, please send \$1.50 to  
Baume & Mercier, Dept. NY10, 555 Fifth Avenue, New York, NY 10017 or 9465 Wilshire Boulevard, Beverly Hills, CA 90212

Oct. 10, 1983

THE

Price \$1.50

# NEW YORKER

