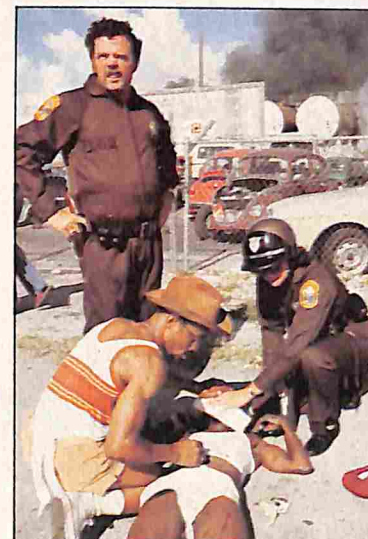




### The Havoc of Mount St. Helens

With a blast comparable to the largest H-bomb ever tested, Mount St. Helens in Washington State blew its top last week—the nation's worst volcanic eruption. At least 18 people died and 88 were missing, and the eastward-spreading cloud of ash dropped a paralyzing blanket of gray soot on cities, farms and highways as far east as Montana. *Page 22*



### Days of Rage

Like the taped replay of a nearly forgotten nightmare, the streets of a Miami ghetto called Liberty City exploded in the bloodiest and costliest black riot since the 1960s. NEWSWEEK's report includes a battlefield account of the three-day uprising, an examination of the police-brutality case that set it off, an exclusive poll revealing what black Americans thought of the riot—and an assessment of the despair and the discontent still smoldering in the ghettos a decade after the last of the long hot summers. *Page 34*

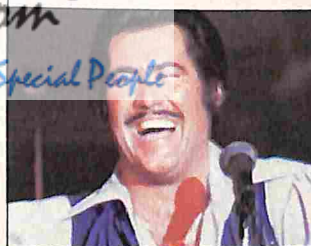


### Rebellion in Korea

In the bloodiest outbreak of violence in South Korea since the Korean War, 200,000 demonstrators went into the streets of Kwangju, calling for the overthrow of the country's military strongman, Gen. Chon Too Hwan. *Page 42*

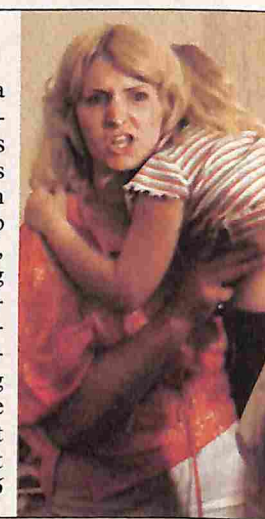
### King of Vegas

He is the king of Las Vegas—and at 38, Wayne Newton is expanding his empire with a long-shot gamble. For \$105 million he has agreed to buy the city's Aladdin Hotel. *Page 71*



### The Love Canal

After living two years with a "health emergency," hundreds of anguished families were leaving their homes near the Love Canal, an abandoned chemical dump outside Niagara Falls, N.Y., last week—many vowing never to return. The government agreed to pay for housing, after protests by the residents—and a study showing evidence of chromosome damage to some of them. But there was controversy about the study's validity. *Page 56*



WHAT SEPARATES  
CONNECTICUT GENERAL  
FROM OTHER GOOD  
INSURANCE COMPANIES  
IS THE FINE LINE  
OF CG PEOPLE.

## CONTENTS

<b>NATIONAL AFFAIRS</b> ..... 22	<b>MEDICINE</b> ..... 56	<b>BOOKS</b> ..... 73	<b>THEATER</b> ..... 92
Mount St. Helens's big bang (the cover)	Fleeing the Love Canal	Joseph P. Lash on Helen Keller and Anne Sullivan Macy	The Hamlet of our time
Measuring the fallout	<b>EDUCATION</b> ..... 58	"Maybe," by Lillian Hellman	<b>OTHER DEPARTMENTS</b>
The mood of ghetto America	Should schools teach moral values?	"On and Off the Floor," by Samuel Shaffer	Letters ..... 5
Miami's three days of rage	<b>ART</b> ..... 62	<b>PHOTOGRAPHY</b> ..... 81	Update ..... 12
The McDuffie case	An American wing for the Metropolitan Museum of Art	Frederick Sommer's interior landscapes	Periscope ..... 21
Decision time for George Bush	<b>BUSINESS</b> ..... 65	<b>DANCE</b> ..... 85	Transition ..... 57
The Cuban blockade is working—so far	Supply-side economics	An opulent revival of "La Bayadère"	Newsmakers ..... 61
<b>INTERNATIONAL</b> ..... 42	CBS gets a new president	<b>MOVIES</b> ..... 87	<b>THE COLUMNISTS</b>
Rebellion in Korea	Gloom in the Grain Belt	"Fame": brilliance and banality	My Turn: Byron Dobell ... 17
U.S. allies: going their own way	A \$15 billion oil-price hike	Two new Westerns	(Meg Greenfield is on vacation.)
Europe's Mideast move	Wayne Newton, the king of Las Vegas	<b>SPORTS</b> ..... 88	Cover: Photo by James Mason— Black Star.
Joining forces against terrorism	Blues for International Harvester	Averting a baseball strike	
Haiti: who loves Baby Doc?		A jockey who takes chances	
Quebec rejects separatism			
<b>NEWS MEDIA</b> ..... 55			
The sale of the Saturday Review			

Letters to the Editor should be sent to NEWSWEEK, 444 Madison Avenue, New York, N.Y. 10022, and subscription inquiries to NEWSWEEK, The NEWSWEEK Building, Livingston, N.J. 07039. NEWSWEEK (ISSN 0028-9604), June 2, 1980, Volume XCV, No. 22, is published weekly, \$32.50 a year, by NEWSWEEK, Inc., 10100 Santa Monica Boulevard, Los Angeles, Calif. 90067. Second class postage paid at Los Angeles, Calif., and at additional mailing offices. **POSTMASTERS:** Send address changes to NEWSWEEK, The NEWSWEEK Building, Livingston, N.J. 07039.

June 2, 1980 / \$1.25

# Newsweek®

# The Big Bang



Meremart.com®

Vintage Magazines for Special People



0WN 7000 PDV SA 0 0L1422 MR01  
ANTHONY S DOWNS  
700 PROVIDENCE BLDG  
HALVERSON MATTERS  
DULUTH MN 55802