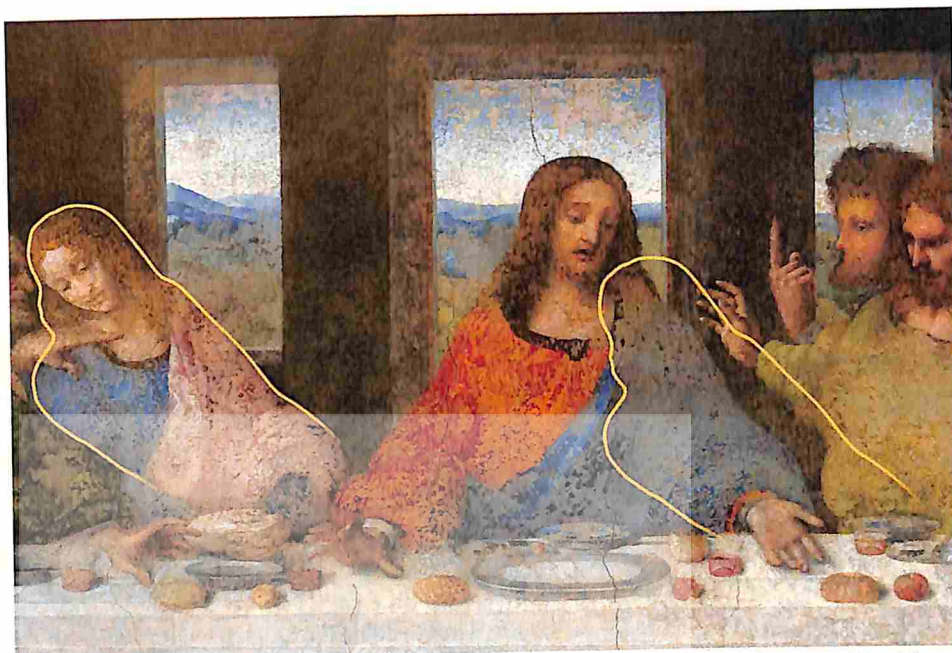


Top of the Week

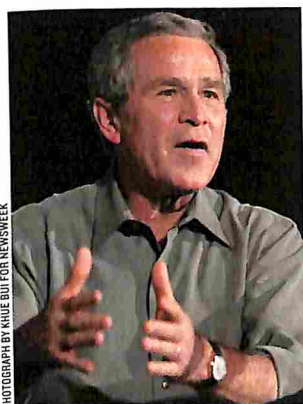
Newsweek

Who Was Mary Magdalene?

Devoted follower and witness to the Resurrection, Mary Magdalene is the stuff of literature and legend. Alternately portrayed as a reformed whore or, in 'The Da Vinci Code,' as Jesus' wife and the mother of his child, she is a critical figure at the heart of the greatest story ever told. In search of the real Mary. **Page 42**



In 'The Da Vinci Code,' a character argues that the disciple John (at Jesus' right) is Mary Magdalene, and that if the figure is moved to Jesus' left, the two form a complete whole, male and female



His immigrant story **Page 24**

IMMIGRATION: Bush's Politics of the Border.....24

How the National Guard Got Its Groove Back.....30

NATIONAL AFFAIRS: In Florida, Gator Hysteria.....31

IRAQ: Basra's 'Occupation Lite' Turns Deadly.....32

MIDDLE EAST: What Is Israel's Obligation to the Victims of Darfur?.....34

FAREED ZAKARIA: For Much of the World, More Than Democracy Is Lacking.....35

BUSINESS: Katrina Survivors Face a New Adversary—Their Insurers.....36

ROBERT J. SAMUELSON: Depopulation Explosion...39

RELIGION: In Search of the Real Mary Magdalene by Jonathan Darman.....42

'Da Vinci' on Screen, Overstuffed and Overwhelming.....52

FAMILY: A Pediatric Guru Changes His Stance on 'Co-Sleeping'.....54

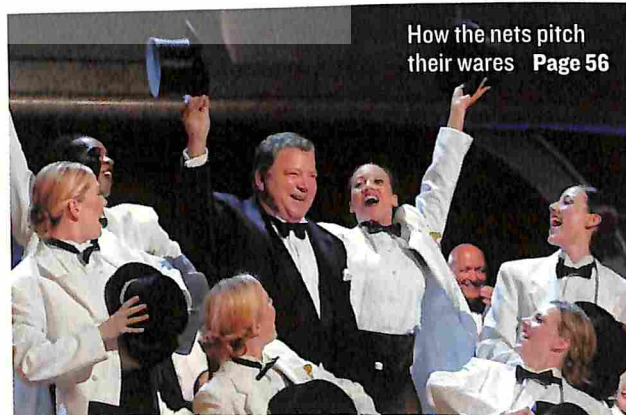
TELEVISION: Is It Fall Already? At the Network 'Upfronts' It Is.....56

THEATER: On Broadway, a Season of Stunning Plays From Ireland.....58

MUSIC: Another Quirky, Charismatic Project From the Versatile Jack White.....60

DEPARTMENTS

THIS WEEK ONLINE	4
PERISCOPE	6
MY TURN	12
THE TECHNOLOGIST	14
LETTERS	18
PERSPECTIVES	23
TIP SHEET	61
NEWSMAKERS	67
ANNA QUINDLEN	68

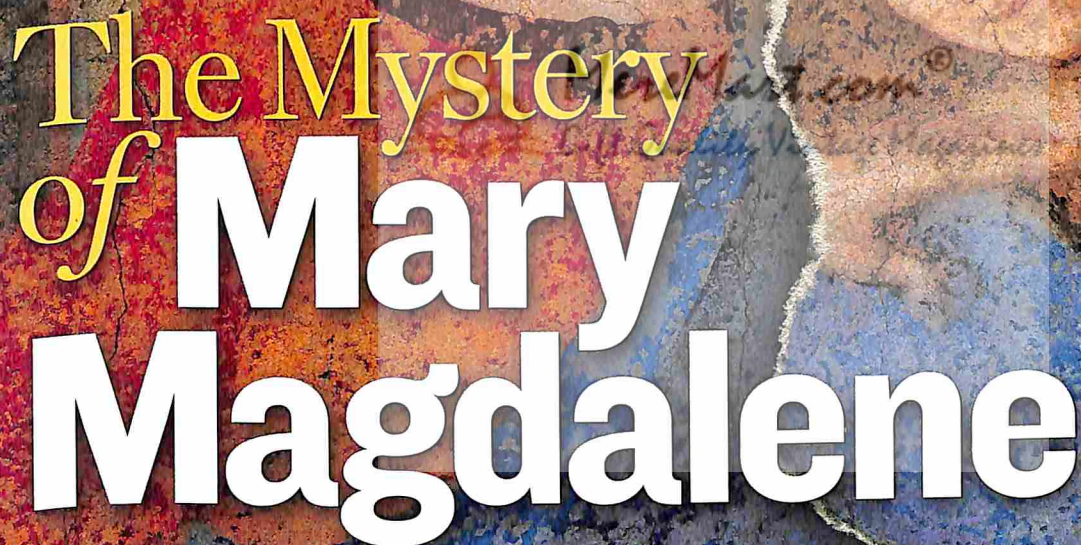


How the nets pitch their wares **Page 56**

COVER: Photo montage by NEWSWEEK, Photograph by Alinari Archives—CORBIS

Newsweek (ISSN 0028-9604), May 29, 2006, Volume CXLVII, No. 22. Newsweek publishes weekly, except when combined issues are published (currently in July, August and December). In the U.S. send subscription inquiries to Newsweek, P.O. Box 5571, Harlan, IA 51593-1071. In Canada: Newsweek, Inc., P.O. Box 4067, Postal Station A, Toronto, ON M5W2K1. Canada Post International Publications Mail (Canadian Distribution) Sales Agreement No. 40051822. Canadian GST No. 123-321-309. All changes of address: 800-634-6850. All other inquiries: 800-631-1040. A one-year subscription (52 issues) is \$41.08 and Canadian \$61.88 (combined issues, when published, count as two issues; any additional special issues, published from time to time, count as an issue). Unless otherwise indicated by source or currency designation, all terms and prices are applicable in the U.S. only and may not apply in Canada. © 2006 Newsweek, Inc. All rights reserved. 251 West 57th Street, New York, NY 10019-1894. Richard M. Smith, Chairman and Editor-in-Chief; Stephen Fuzesi Jr., Chief Counsel and Secretary. Periodicals postage paid at New York, NY, and at additional mailing offices. **POSTMASTERS:** send address changes to Newsweek, P.O. Box 5572, Harlan, IA 51593-1072. Printed in U.S.A. We may make a portion of our mailing list available to a select group of companies whose products or services may be of interest to you. If you would prefer that we not disclose your personal information for this purpose, please contact subscriber services by mail, phone or e-mail at nwsb@newsweek.com. Your choice will not affect the cost of your service.

Newswave

newsweek.msnbc.com

The Mystery of Mary Magdalene

XXXXXXXXXXXXXXXXXXXXXXXXXXXX

658933

MONTAGE BY NEWSWEEK. IMAGE © ALINARI ARCHIVES/CORBIS