

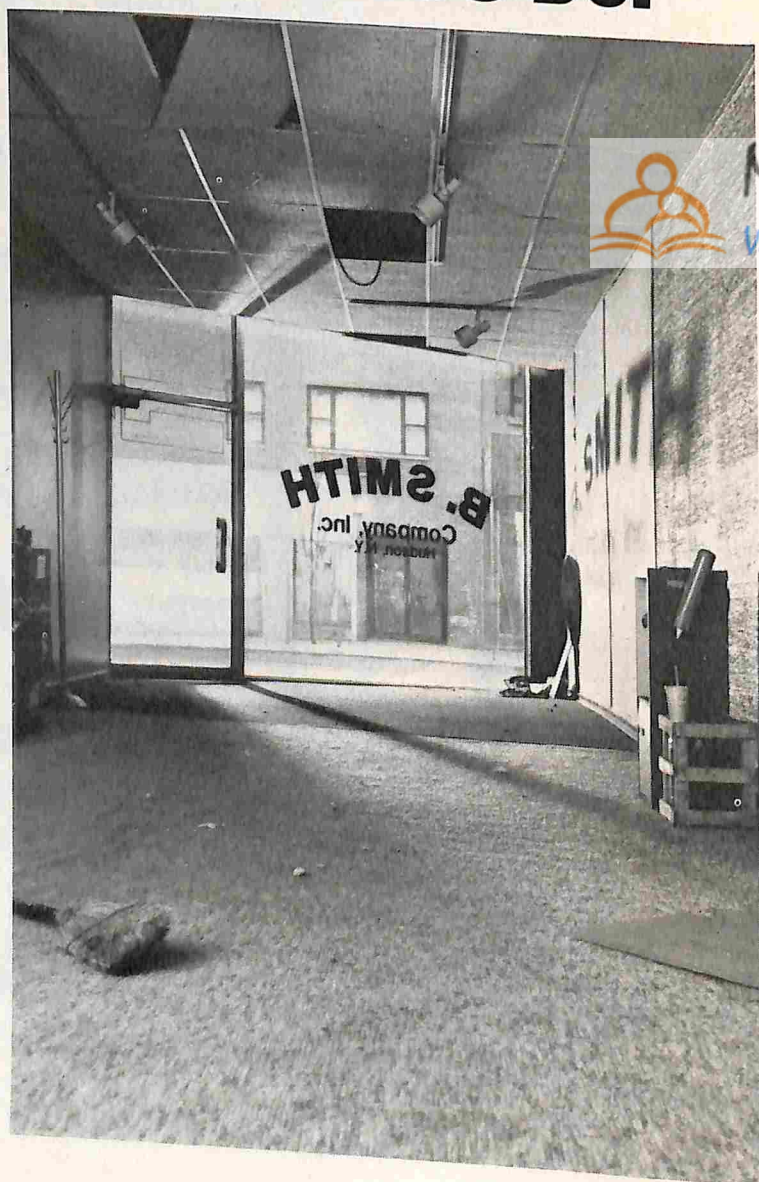
YOUR BUSINESS NEEDS LIFE INSURANCE AS MUCH AS YOU DO.

If you're a business owner, your family's livelihood depends on that business. If it's not protected and you die or become disabled, your family could lose everything.

Which is why it makes sense to look at business insurance with the same eye to long-range planning you'd give to controlling inventory or buying equipment. And why you would do well to get a free business needs analysis from a Prudential representative.

You'll learn how your family can get the full value of your business, if you should die. How you could maintain financial control should your partner leave or die. How to keep key employees. The tax advantages of buying insurance with corporate funds. And other ways your business can benefit you and your family.

So talk to a Prudential representative today. He or she will be happy to work with you, your attorney or accountant to add life to your business.



People weekly

ON THE COVER □ 80

A dynamic duo in *Terms of Endearment*, **Shirley MacLaine** and **Debra Winger** forged their own stormy mother-daughter relationship on location

Cover photograph by Zade Rosenthal / Paramount Pictures
Inset: Rex Features, Ltd.

MAIL □ 4

PICKS & PANS □ 9

□ **Michael Landon** bids farewell to *Little House* on NBC, and **Jim McKay** hosts an Olympic hockey preview on ABC

□ **Woody Allen** and **Mia Farrow** team up again in Allen's *Broadway Danny Rose*

□ A photo biography looks at the life of **Ingrid Bergman**

□ **Carole King** keeps traveling in the middle lane on *Speeding Time*

TAKE ONE □ 25

STAR TRACKS □ 61

□ **Lauren Hutton**, who prefers saying "cheese" for bread, docks a London paparazzo

□ **Boy George's** rivals another boy named **Marilyn**

PEOPLE PUZZLE □ 98

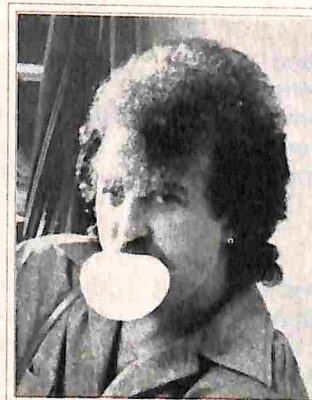
CHATTER □ 104



School days, 26



The new Gable, 88



Don't break his stride, 95

UP FRONT □ 26

□ The lowest-paid teacher in the U.S., **Janice Herbranson**, gives—and gets—very big rewards at a five-pupil, one-room school in McLeod, N.Dak.

□ The deficit in President Reagan's new budget is too big to satisfy White House economist **Martin Feldstein**

TOP □ 42

Live, from mythical Lake Wobegon, Minn., comes **Garrison Keillor** and a strange and charming radio hit, *A Prairie Home Companion*

MAIN STREET □ 48

After an invasion of 7,000 followers of the **Maharishi Mahesh Yogi**, a small Iowa town ponders the dubious bliss of being a meditator's utopia

STYLE □ 55

Bijan Pakzad conquered Rodeo Drive with his outrageously priced threads for men, and now he has designs on New York

PAST □ 64

On Feb. 7, 1964 **John, Paul, George** and **Ringo** landed in the U.S.—and this is the way it was

LOOKOUT □ 72

Comic-impressionist **Jim Carrey** puts on a happy face (and 200 others) with a new TV show in the works

HAPPY □ 77

Aging and no longer singing together, *The Sound of Music's* **Trapp family** stages a harmonious family reunion with **Mary Martin** in the hills of Vermont

HEIRS □ 88

He never knew his dad but spotlight-shunning **John Clark Gable** inherited the King's love of driving fast

SONG □ 95

Matthew Wilder moves toward the top of the charts the hard way: without MTV

CRIME □ 101

Cowboy **Willis Hammett** tried to ride into the night but got picked up for drunk riding instead

PAGES □ 102

Monty Python's **Terry Jones** writes fairy tales that are anything but Grimm

PEOPLE WEEKLY (ISSN 0093-7673), published weekly, except two issues combined in one at year-end, \$45 per year U.S. and \$65 per year Canada only, by Time Inc., 3435 Wilshire Blvd., Los Angeles, Calif. 90010. Principal office: Rockefeller Center, New York, N.Y. 10020. J. Richard Munro, President; E. Thayer Bigelow, Treasurer; Charles B. Bear, Secretary. Second-class postage paid at Los Angeles, Calif. and at additional mailing offices. Authorized as second-class mail by the Post Office Dept., Ottawa, Canada and for payment of postage in cash. Direct subscription inquiries to PEOPLE WEEKLY, Time & Life Building, 541 N. Fairbanks Court, Chicago, Ill. 60611. Send all other mail to PEOPLE WEEKLY, Time & Life Building, Rockefeller Center, New York, N.Y. 10020. The editors assume no responsibility for unsolicited photographs and manuscripts, which must be accompanied by a self-addressed, stamped envelope if the material is to be returned.
© 1984 Time Inc. All rights reserved. Reproduction in whole or in part without written permission is prohibited. PEOPLE WEEKLY is a registered trademark of Time Incorporated.

FEBRUARY 6, 1984 ■ \$1.25

People

weekly



**Beatles' U.S. invasion:
The insiders' view**



On good *Terms*? Debra Winger and Shirley MacLaine talk about

Mothers & Daughters

and their own feisty face-off as stars of the Oscar-bound movie

