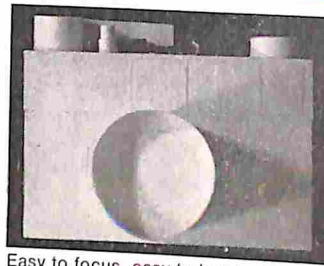


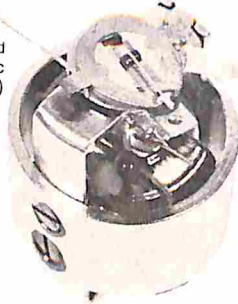


Weegee—*from Murder, Inc. to the Museum of Modern Art* (p. 92)

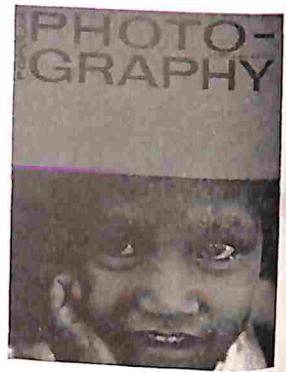
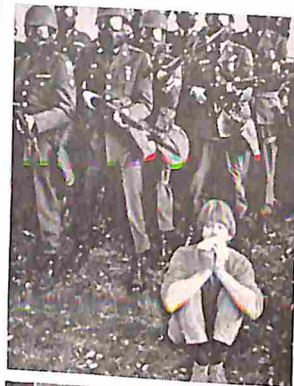


Easy to focus, easy to buy (p. 76)

Taut-band is terrific (p. 72)



At a peace march or at the zoo, he can get great pictures (p. 81)



## COVER STORY

While driving around the outskirts of Mexico City, Tom McCarthy made this portrait of an appealing child with his 105-mm lens, Nikon F, on Ektachrome-X film in open shade. See more of the McCarthy eye for color in his 8-page portfolio that begins on p. 80, plus a story on him.

## PHOTOGRAPHY TODAY

ARE YOUR PRINTS FADING AWAY? The attack might come from the air, or from the paper mounting by David Vestal 67

TOM MCCARTHY: A GREAT EYE FOR COLOR AND A RESTLESS DRIVE FOR SOMETHING MORE 80

WEEGEE—A LENS ON LIFE 1899-1968 World's greatest, without tears by Harvey V. Fondiller, Norman Rothschild, and David Vestal 92

THE HATTERSLEY CLASS: MUST YOU BE INVOLVED? It may mean forgetting about those visual sneers you shoot 101

## EQUIPMENT AND MATERIALS

'GROUNDPOD' MAKES DOWN-TO-EARTH PICTURES Here's how to get a steady, low-angle look at life by Robert R. Heaton 22

KOOKIE KAMERA MAKES THREE-MINUTE PRINTS, BUT THEY TASTE AWFUL At the end of the bar, okay by Simon Nathan 58

BE A COPY CAT Sure, there's no such thing as a 'duplicate,' but do you know how you can come close? by Bill Pierce 70

NEW LOOK IN METERS Centuries-old jeweled movement has an efficient and very sensitive rival by W. Frederic Wilson 72

YOU CAN'T PRINT THAT, OR CAN YOU? To beef up those really thin negatives, try intensifying by Cora Wright Kennedy 74

THE BARGAIN-PRICED RANGEFINDER CAMERA When lights are low, this one puts you into the picture by Norman Rothschild 76

LIGHTWEIGHT LIGHTING FOR HEAVYWEIGHT SHOOTING Easier to assemble and use than an Erector Set 78

FIRST LOOK Konica C35 camera, Bauer S1 slide projector, Spiratone 2X-3X Automatic ZoomXtender, Cosco stroboscopic lights 90

CARRYING BIG LENSES A simple mounting plate lets you sling a 300-mm over your shoulder by Donald Hamilton 119

## MOVIES

THE FIRST 100 FEET ARE THE HARDEST Common shooting errors can be spotted the first time around by Ivan Berger 112

FILM NOTES What do they know at Mannheim that maybe Lincoln Center ought to find out? by Harvey V. Fondiller 114

## DEPARTMENTS

LETTERS TO THE EDITOR 4

HELP! Our readers want to know 8

NEWSFRONT Latest reports from the photo world 13

COLOR CLINIC It is the humidity by David B. Eisendrath 16

TRAVEL Croiriez-vous 'chauffeuses'? by Les Barry 20

TOOLS & TECHNIQUES Reflectors by Cora Wright Kennedy 24

VIEWPOINT Photography considers its past by Jacob Deschin 28

IN THE DARKROOM Texture treasures by Al Francekevich 34

OFFBEAT It's not *that* technical by Norman Rothschild 36

SHOWS WE'VE SEEN Trip to the Bay State by David Vestal 40

FOCUS ON SOUND by Bennett Evans, Inside Track 46

JUST OUT! Product listings 50

SHOP TALK Some improve with torture by Norman Goldberg 60

BOOK REVIEW *Best of Beaton* by David Vestal 62

SIMON SAYS Versatility plus in an SLR by Simon Nathan 64

LAB REPORTS Leicaflex SL, Tessina 35L 96

SHOWS TO SEE A national calendar of exhibitions 122

AIDS TO BETTER PHOTOGRAPHY 149

ADVERTISERS' INDEX 149

I WANT TO BUY ... and where can I get it? 170

178

POPULAR PHOTOGRAPHY: Published monthly by Ziff-Davis Publishing Company at 307 North Michigan Ave., Chicago, Ill. 60601. One year subscription \$6.00. Second Class Postage paid at Chicago, Ill. and at additional mailing offices. Subscription service: Portland Place, Boulder, Colo. 80302



Member Audit Bureau of Circulations





POPULAR

# PHOTO- GRAPHY

APRIL • 60 CENTS

4169



## WHY CAMERAS FAIL

TO PASS  
OUR TOUGH  
LAB TESTS

- Good pictures with a poor lens
- Your meter letting you down?
- Bargain-priced 35 is great for low light
- You can't print that, or can you?
- How to keep your pictures from fading away

 **MereMart.com**<sup>®</sup>  
Gift Quality Vintage Magazines



490684 LDM 2120A096 JUL70 B P  
R LDM  
2120 ARGONNE DR NE  
MINNEAPOLIS MN 55421

TOM McCARTHY