

psychology today

NOVEMBER 1981 / VOL. 15, NO. 11

THE MAGAZINE OF HUMAN BEHAVIOR

34

But That Would Be Wrong . . .

By James Hassett

How often do we cheat and lie? In what kinds of situations? Do circumstances make much difference? How do we feel about our ethical choices? More than 24,000 readers answered *PT*'s ethics questionnaire, providing ample data for our report—the first of several articles in this issue addressing questions of ethics in terms of psychology. One generalization: people don't often live up to their ethical standards.

57

The Protection of Ezra Pound

By E. Fuller Torrey

New evidence shows that the poet, diagnosed insane, was sane enough to escape a treason trial with the help of a distinguished psychiatrist who engineered the finding that Pound was mentally unfit.

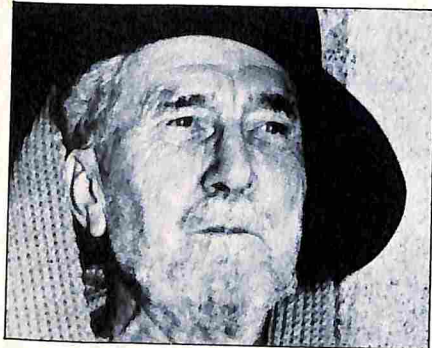
68

Living in Moral Pain

By Peter Marin

"Delayed-stress syndrome" is hardly an appropriate diagnosis for a troubled Vietnam veteran who has participated in atrocities. Marin argues that no therapy is equipped to deal with moral torment.

PAGE 57



82

Would You Believe a Child Witness?

By Gail S. Goodman and Joseph A. Michelli

Jurors often do, and should. Recent research suggests that children's testimony can be a powerful force in the courtroom, just as influential—and accurate—as the testimony of adults. But young witnesses may need their own lawyers in order to safeguard their welfare in judicial battles.

DEPARTMENTS

5

The Public Mind / Stepchildren of the Moral Majority

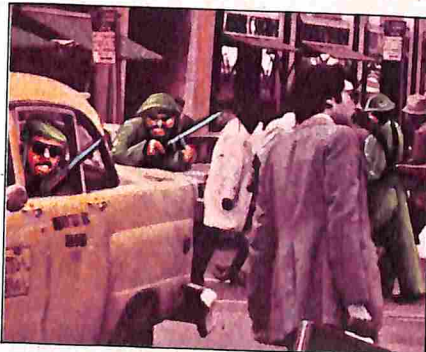
By Daniel Yankelovich

Pollsters trying to measure the numerical strength of the Moral Majority in order to estimate its impact on American life are on the wrong track. Ask the right questions, and you see that the Reverend Jerry Falwell has a potentially substantial closet constituency, united on a single concern: the effects of the prevailing moral climate of permissiveness on children.

12

Letters

PAGE 68



16

At Issue / A Dishonest Defense

By Steven Brill

A liberal lawyer argues the case for abolishing the insanity plea. "Intellectually dishonest," he calls it, and a contradiction of the values our criminal justice system tries to preserve.

22

Newsline

Rollo May and B. F. Skinner reneged, but other members of the American Psychological Association appeared at its 89th annual convention with reports on widowhood fantasies, mother-child squabbles, sexually abused prostitutes, and other matters.

97

Books / The Life Changers

By Zick Rubin

The statistical data are mainly window dressing, but on balance Gail Sheehy's *Pathfinders* is a worthy successor to *Passages*.

108

The Brain / The Dreamer's Paralysis

By Michael H. Chase

Why we don't act out our dreams.

Cover: Pen by Aoki;
photograph by Mark Kozlowski

PAGE 82



EXECUTIVE AND EDITORIAL OFFICES: Psychology Today Magazine, (USPS #905-640), One Park Avenue, New York, N.Y. 10016. Editorial contributions must be accompanied by return postage and will be handled with reasonable care. Publisher assumes no responsibility for return or safety of unsolicited art, photos, or manuscripts. Published monthly. Volume 15, Number 10. Postmaster: Send address changes to Psychology Today, P.O. Box 2990, Boulder, Colo. 80302. Second-class postage paid at New York, N.Y. 10016 and at additional mailing offices. Authorized as second-class mail by the Post Office Dept., Ottawa, Canada, and for payment of postage in cash. One-year subscription rate for U.S. and possessions, \$13.97; Canada, \$16.97. All other countries, one-year subscription rate, \$18.97, cash orders only, payable in U.S. currency. **ADVERTISING OFFICES:** One Park Avenue, New York, N.Y. 10016, (212) 725-3900; 180 North Michigan, Suite 1400, Chicago, Ill. 60601, (312) 346-2600; 2300 West Big Beaver Rd., Troy, Mich. 48064, (313) 649-1950; 3460 Wilshire Blvd., Beverly Hills, Ca. 90010, (213) 387-2100; Miller & Tillman, Inc., Corporate Commons, 4651 Roswell Rd., N.E., Suite 201-C, Atlanta, Ga. 30342, (404) 252-9588. Copyright © 1981 by Ziff-Davis Publishing Company. All rights reserved. Psychology Today and Human Behavior are registered trademarks.

psychology today®

**PT's Survey Report
on Cheating, Lying,
and Guilt**

**The Hidden Appeal of
the Moral Majority,
by Daniel Yankelevich**

**Living in Moral Pain,
by Peter Marin**

**How Psychiatrists
Protected Ezra Pound,
by E. Fuller Torrey**

**Can You Trust
Children as
Court Witnesses?**

some sense of
have and define
tain typical situ-
cm are willing to
ll analyze and re-
ture issue.
naire can include
nce moral choices.
ay therefore seem
estion, try to give

ly comes
pends on your candor

Circle your answers on the reply form that
follows the questionnaire, tear it out, and
mail by June 30, 1981 to:

**Ethics Survey Department
Psychology Department
Boston University
Boston, Mass. 02215**

MAKING ETHICAL CHOICES



3
As you drive out of a crowded parking lot, your front bumper scratches the paint on a brand new car parked next to you. Although the scratch is noticeable, and is would chat...

4
A close friend who is un... having a secret affair. The... occasionally asks you to "c... her. If the spouse asks, you... your friend is spending an ev... you when he or she is with a...

5
You go to a cocktail party at a fr... house and drink too much. The... you that you are not sober eno... safely and you know that even... cups of... 30...

6
You are at a cocktail party at a fr... house and drink too much. The... you that you are not sober eno... safely and you know that even... cups of... 30...

4155 NM 55415
CECIL ST SE
FOLLETT A ENZLETT
811 14024 14282 III

s You are
d corner.