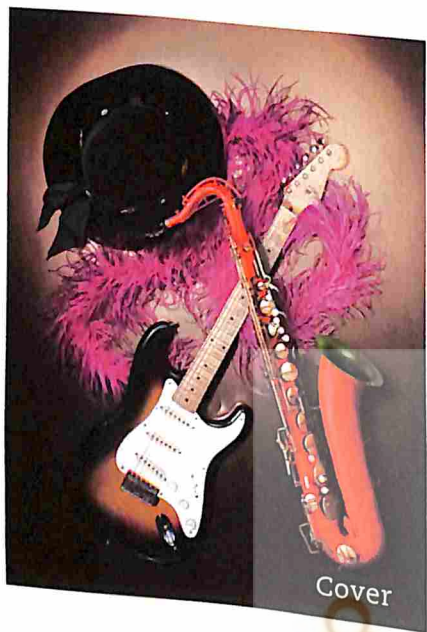


Smithsonian departments

JUNE 2000  VOLUME 31, NUMBER 3



Cover

Cover Pop icons: "Brownie," the Fender Stratocaster guitar on which Clapton played his anthem "Layla"; the boa worn by blues star Joplin on her *Pearl* album; Hendrix's felt hat, from *Smash Hits*; McNeely's tenor sax, which inspired the screech in rock and roll.
PHOTOGRAPH BY STEVE GOTTLIEB AND STANLEY SMITH

12 Letters to the Editor

121 Additional Sources

123 Smithsonian Study Tours

10 A Note from the Secretary

Whole Worlds to Order

BY SECRETARY LAWRENCE M. SMALL

16 Points of Interest

Camping in Concert

BY MINNA MORSE

22 The Object at Hand

The "Indomitable" MRI

BY JULIE WAKEFIELD

27 Around the Mall & Beyond

The Talking Drums

BY MICHAEL KERNAN

32 Smithsonian Highlights

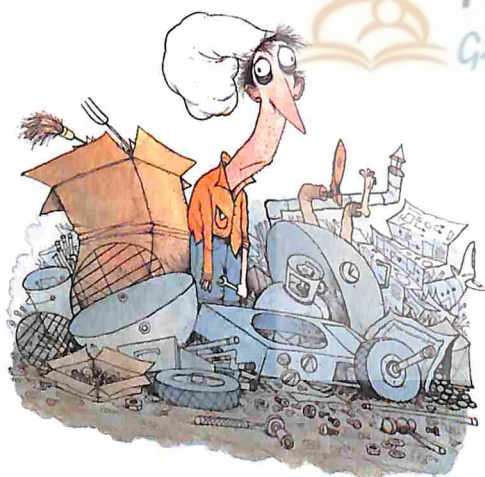
Art Recalls a Forgotten War

Highlights Calendar starts on page 34

124 The Last Page

Shop for This Label: "No Assembly Required"

BY DANNY HEITMAN



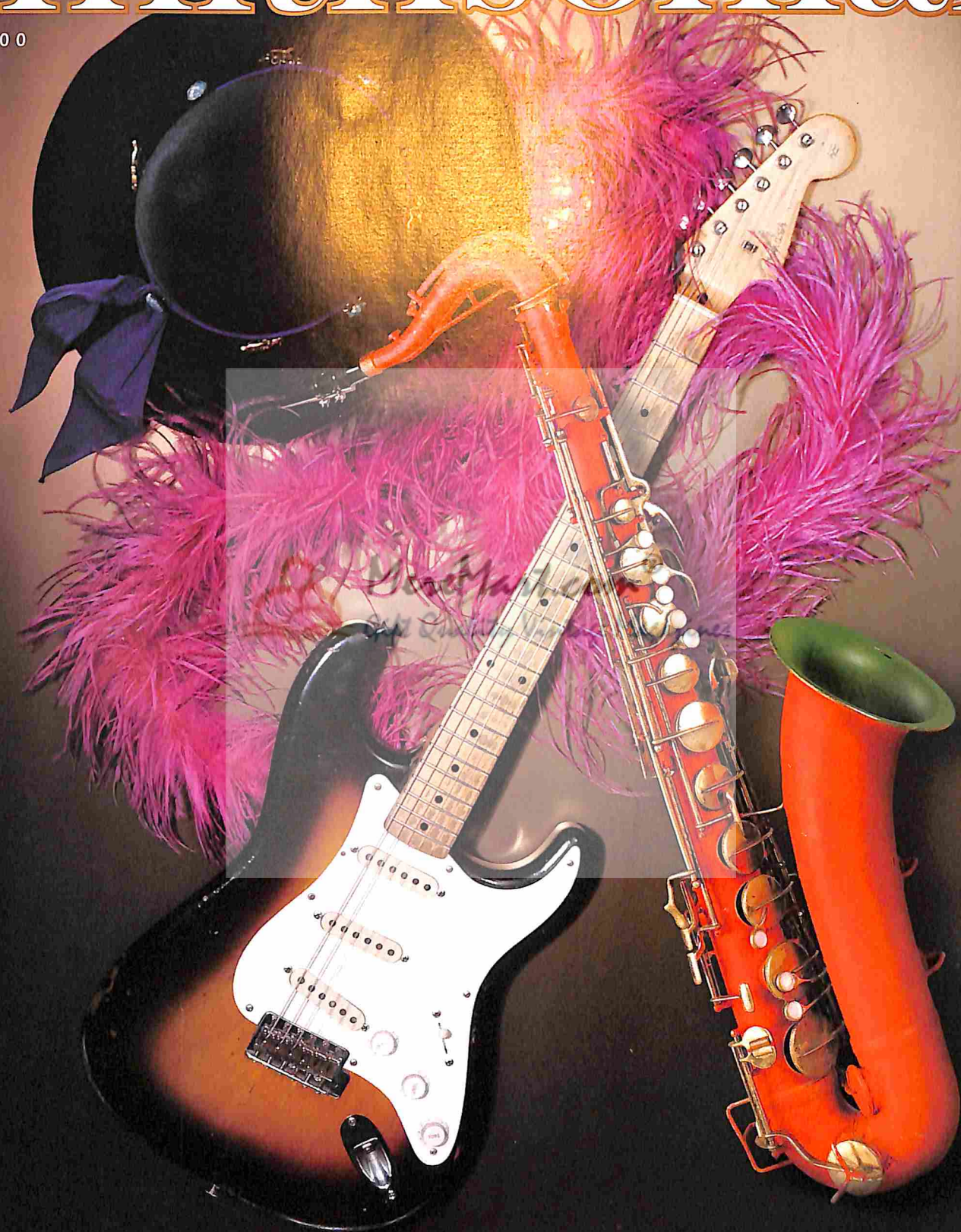
124



27

Smithsonian

JUNE 2000



Onstage at a new shrine to rock and roll:

Jimi Hendrix's hat, Janis Joplin's boa, Eric Clapton's guitar and Big Jay McNeely's sax

[PAGE 68]